

BALDOR® • RELIANCE

Product Information Packet

M3452

.17HP, 1140RPM, 3PH, 60HZ, 48, 3408M, TEFC, F1

Copyright © All product information within this document is subject to Baldor Electric Company copyright © protection, unless otherwise noted.

Part Detail							
Revision:	P	Status:	PRD/A	Change #:		Proprietary:	No
Type:	AC	Prod. Type:	3408M	Elec. Spec:	34WGW011	CD Diagram:	
Enclosure:	TEFC	Mfg Plant:		Mech. Spec:	34A051	Layout:	
Frame:	48	Mounting:	F1	Poles:	06	Created Date:	
Base:	RG	Rotation:	R	Insulation:	B	Eff. Date:	07-19-2007
Leads:	9#18	Literature:		Elec. Diagram:		Replaced By:	

Nameplate NP1256L									
CAT.NO.	M3452								
SPEC.	34A51W11								
HP	.17								
VOLTS	230/460								
AMP	1.1/.55								
RPM	1140								
FRAME	48	HZ	60	PH	3				
SER.F.	1.35	CODE	K	DES	B	CLASS	B		
NEMA-NOM-EFF	57.5	PF	49						
RATING	40C AMB-CONT								
CC				USABLE AT 208V	1.3				
DE	6203	ODE	6203						
ENCL	TEFC	SN							
	SFA 1.2/.6								

Parts List		
Part Number	Description	Quantity
SA009763	SA 34A51W11	1.000 EA
RA006208	RA 34A51W11	1.000 EA
NS2512A01	INSULATOR, CONDUIT BOX X	1.000 EA
34CB3002A	CB CAST W/.88 DIA HOLE	1.000 EA
34GS1029A01	GASKET, CONDUIT BOX	1.000 EA
51XB1016A07	10-16 X 7/16 HXWSSLD SERTYB	2.000 EA
11XW1032G06	10-32 X .38, TAPTITE II, HEX WSHR SLTD U	1.000 EA
34EP3102A01SP	FR ENDPLATE, MACH	1.000 EA
HW5100A03SP	WAVY WASHER (W1543-017)	1.000 EA
34EP3102A02SP	FR/PU ENDPLATE, MACH	1.000 EA
XY1032A02	10-32 HEX NUT DIRECTIONAL SERRATION	4.000 EA
34FN3002A01SP	EXTERNAL FAN, PLASTIC, .637/.639 HUB W/	1.000 EA
34FH4002A01	IEC FH NO GREASER	1.000 EA
51XW1032A06	10-32 X .38, TAPTITE II, HEX WSHR SLTD S	3.000 EA
34CB4517	CB LID 4 MTG HOLES .22 DIA STAMPED, FOR	1.000 EA
34GS1031A01	GASKET, FLAT CONDUIT BOX LID (LEXIDE)	1.000 EA
51XW0832A07	8-32 X .44, TAPTITE II, HEX WSHR SLTD SE	4.000 EA
MG1000G27	PAINT- S9282E CHARCOAL GREY	0.014 GA
10XF0440S02	04-40 X 1/8 TYPE F HEX HD STAINLESS STIC	2.000 EA
HA3100A12	THRUBOLT 10-32 X 7.375	4.000 EA
LB1125C01	STD (STOCK) CARTON LABEL BALDOR WITH FLA	1.000 EA
LC0005E01	CONN.DIA./WARNING LABEL (LC0005/LB1119)	1.000 EA
NP1256L	ALUM UL CSA CC	1.000 EA
34PA1002	PACKING GROUP, BALDOR	1.000 EA

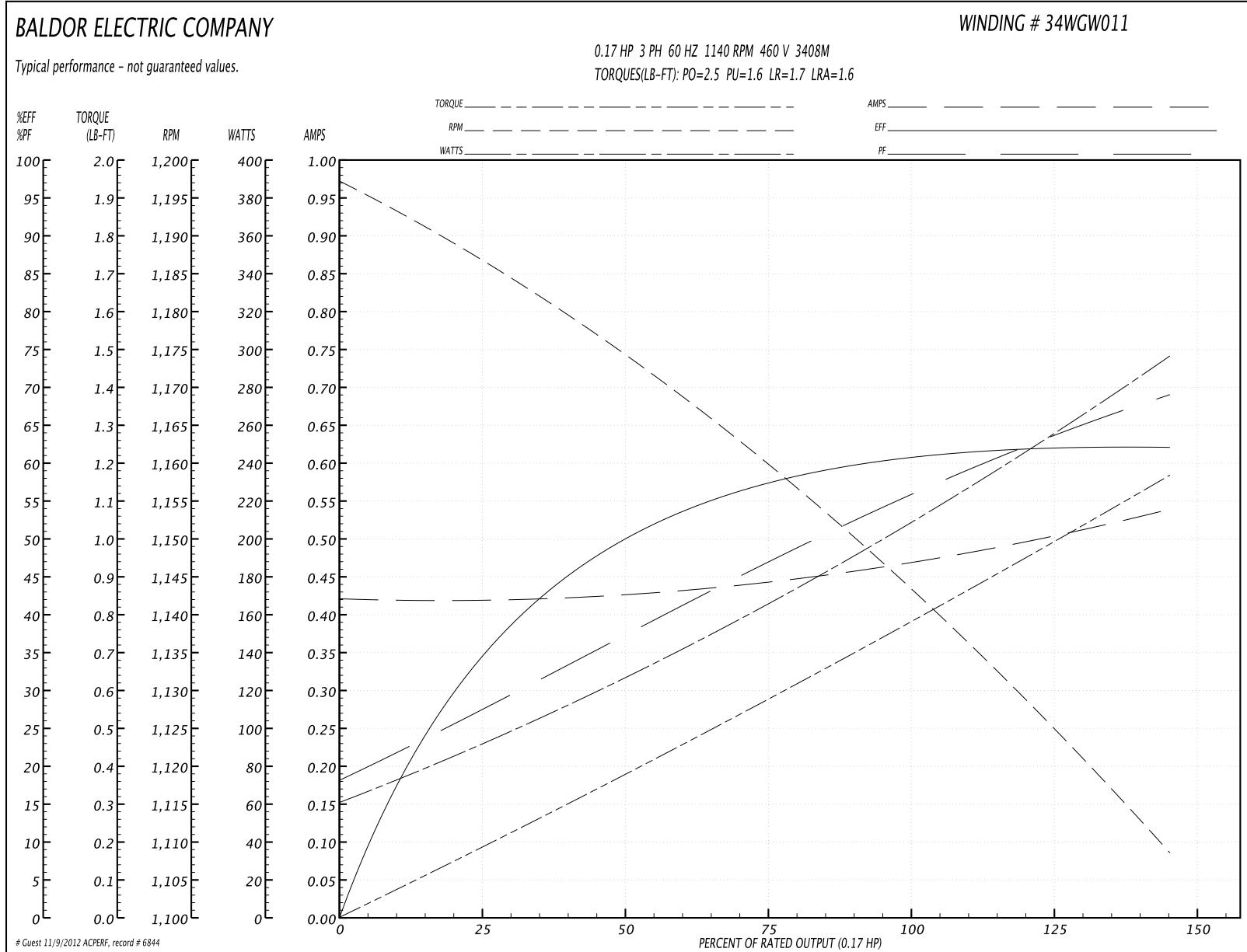
Accessories		
Part Number	Description	Multiplier
34-3900T	C-FACE KIT	A8

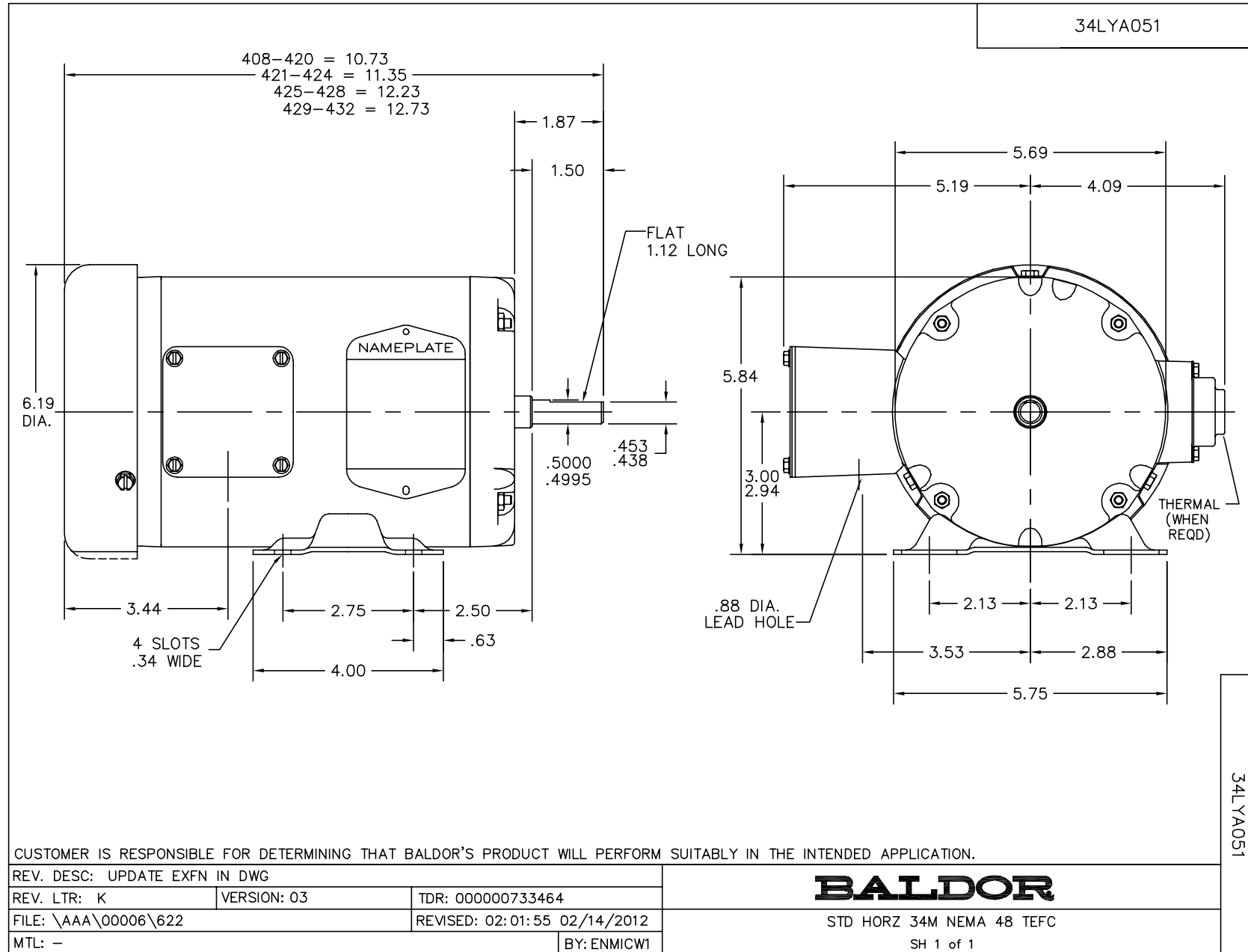
Performance Data at 460V, 60Hz, 0.17HP (Typical performance - Not guaranteed values)

General Characteristics			
Full Load Torque:	0.78 LB-FT	Start Configuration:	DOL
No-Load Current:	0.42 Amps	Break-Down Torque:	2.5 LB-FT
Line-line Res. @ 25°C.:	158.0 Ohms A Ph / 0.0 Ohms B Ph	Pull-Up Torque:	1.6 LB-FT
Temp. Rise @ Rated Load:	38 C	Locked-Rotor Torque:	1.7 LB-FT
Temp. Rise @ S.F. Load:	48 C	Starting Current:	1.6 Amps

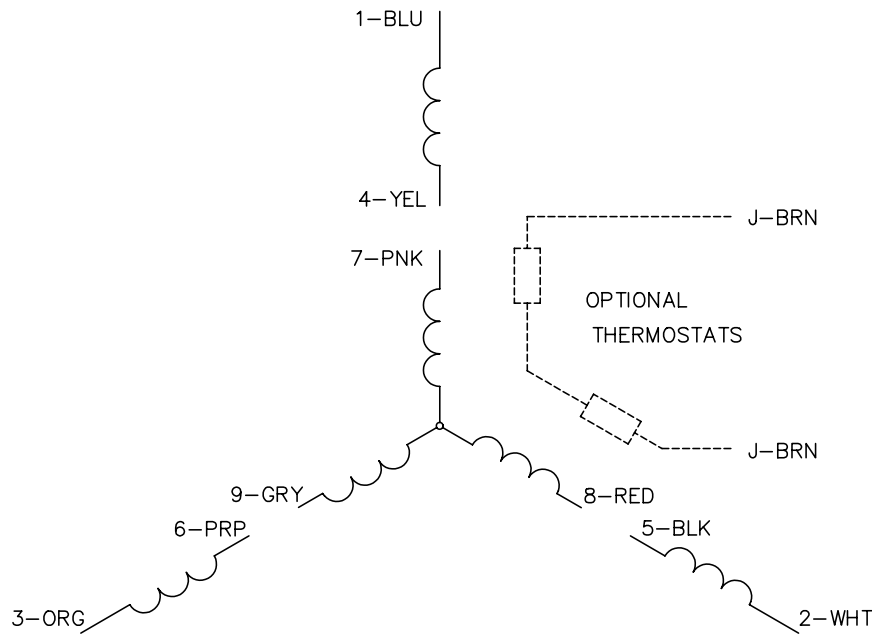
Load Characteristics							
% of Rated Load	25	50	75	100	125	150	S.F.
Power Factor:	28.0	38.0	47.0	55.0	63.0	68.0	66.0
Efficiency:	35.0	50.0	58.0	61.0	62.0	62.0	62.4
Speed:	1185.0	1174.0	1159.0	1144.0	1127.0	1108.0	1120.0
Line Amperes:	0.42	0.43	0.44	0.47	0.5	0.54	0.51

Performance Graph at 460V, 60Hz, 0.17HP Typical performance - Not guaranteed values





CD0005

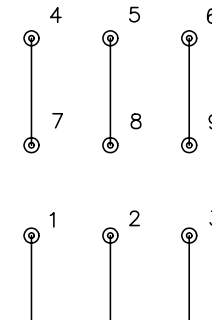


LOW VOLTAGE
(2Y)



LINE

HIGH VOLTAGE
(1Y)



LINE

NOTES:

1. INTERCHANGE ANY TWO LINE LEADS TO REVERSE ROTATION.
2. OPTIONAL THERMOSTATS ARE PROVIDED WHEN SPECIFIED.
3. ACTUAL NUMBER OF INTERNAL PARALLEL CIRCUITS MAY BE A MULTIPLE OF THOSE SHOWN ABOVE.
4. LEAD COLORS ARE OPTIONAL. LEADS MUST ALWAYS BE NUMBERED AS SHOWN.

REV. DESC: REVISE TO SHOW OPTIONAL COLORS			
REV. LTR: E	BY: JLP	REVISED: 01/19/99 10:15	TDR: 0171435
90000		FILE: AAA00005140	MDL: -
		MTL: -	

BALDOR ELECTRIC Co.

3PH, DV, 9 LEADS

CD0005