

# **BALDOR® • RELIANCE**

## **Product Information Packet**

### **M3555T-57**

**2HP,2850RPM,3PH,50HZ,145T,3526M,TEFC,F1**

Copyright © All product information within this document is subject to Baldor Electric Company copyright © protection, unless otherwise noted.

Part Detail							
Revision:	B	Status:	PRD/A	Change #:		Proprietary:	No
Type:	AC	Prod. Type:	3526M	Elec. Spec:	35WGP361	CD Diagram:	
Enclosure:	TEFC	Mfg Plant:		Mech. Spec:	35TT638	Layout:	
Frame:	145T	Mounting:	F1	Poles:	02	Created Date:	09-14-2011
Base:	RG	Rotation:	R	Insulation:	B	Eff. Date:	08-10-2012
Leads:	6#18	Literature:		Elec. Diagram:		Replaced By:	

Nameplate NP2717L								
CAT NO	M3555T-57							
SPEC.	35TT638P361H1							
HP	2	PH				3		
VOLTS	230/400							
AMP	5.2/3							
RPM	2850							
FRAME	145T	HZ				50	I.P.	44
SER.F.	1.00	CODE				K	DES	B CL B
NEMA-NOM-EFF	81.5	% (100%) IEC60034-2-1						
PF	87	USABLE AT 208V						
RATING	40C AMB-CONT	CC						
DE BRG	6205	ODE				6203		
ENCL	TEFC	SN						
BLANK	IE2 50HZ - 81(75%) 79(50%)							

Parts List		
Part Number	Description	Quantity
SA230716	SA 35TT638P361H1	1.000 EA
RA217740	RA 35TT638P361H1	1.000 EA
34FN3002A01SP	EXTERNAL FAN, PLASTIC, .637/.639 HUB W/	1.000 EA
NS2512A01	INSULATOR, CONDUIT BOX X	1.000 EA
35CB3009	35 CB CASTING W/1.09 DIA. LEAD HOLE @ 6:	1.000 EA
36GS1000SP	GASKET-CONDUIT BOX, .06 THICK #SV-330 LE	1.000 EA
51XB1016A07	10-16 X 7/16 HXWSSLD SERTYB	2.000 EA
11XW1032G06	10-32 X .38, TAPTITE II, HEX WSHR SLTD U	1.000 EA
35EP3100M01	FREP TEFC 203 BRG W/GRSR (RAISED FH PADS	1.000 EA
HW4500A01	1641B(ALEMITE)400 UNIV, GREASE FITT	1.000 EA
HW5100A03SP	WAVY WASHER (W1543-017)	1.000 EA
35EP3101A01SP	STD PU EP-ENCLOSED-205 BRG-W/GREASER	1.000 EA
HW4500A01	1641B(ALEMITE)400 UNIV, GREASE FITT	1.000 EA
XY1032A02	10-32 HEX NUT DIRECTIONAL SERRATION	4.000 EA
35FH4005A84SP	IEC FH W/GRSR, NO DIMPLES W/AUTOPHERETIC	1.000 EA
51XW1032A06	10-32 X .38, TAPTITE II, HEX WSHR SLTD S	3.000 EA
35CB4521	35 LIPPED CB LID (GALV & PHOSPH)	1.000 EA
35GS1030	35 GS FOR CB LID - LEXIDE	1.000 EA
51XW0832A07	8-32 X .44, TAPTITE II, HEX WSHR SLTD SE	4.000 EA
HW2501D13SP	KEY, 3/16 SQ X 1.375	1.000 EA
HA7000A01	KEY RETAINER 7/8" DIA SHAFT	1.000 EA
10XF0440S02	04-40 X 1/8 TYPE F HEX HD STAINLESS STIC	2.000 EA
MJ1000A75	GREASE, POLYREX EM EXXON	0.050 LB
MG1000G27	PAINT- S9282E CHARCOAL GREY	0.017 GA

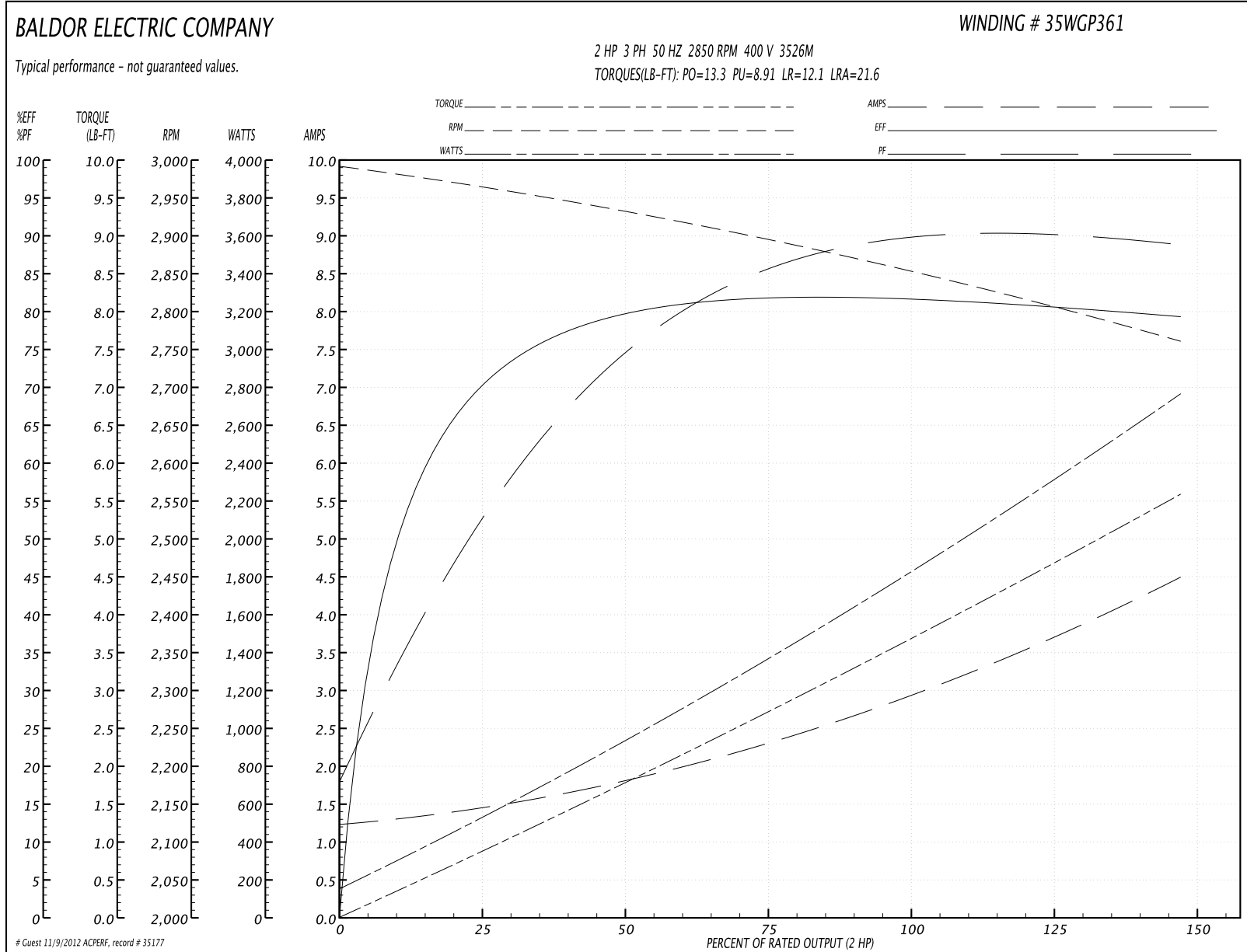
Parts List (continued)		
Part Number	Description	Quantity
HA4067A01	PUSH IN DRAIN FITTING (BLACK)	1.000 EA
HA4067A01	PUSH IN DRAIN FITTING (BLACK)	1.000 EA
HA3100A18	THRUBOLT 10-32 X 9.250	4.000 EA
LB5040	INSTRUCTION TAG, AC & DC	1.000 EA
LB1119	WARNING LABEL	1.000 EA
LB1125C04	STD-E (STOCK CTN LABEL STD-E WITH FLAG)	1.000 EA
LC0034	CONNECTION LABEL	1.000 EA
NP2717L	ALUM NEMA IE2 UL CSA CC CE	1.000 EA
PA1000	PACKING GROUP 3500 SHORT	1.000 EA

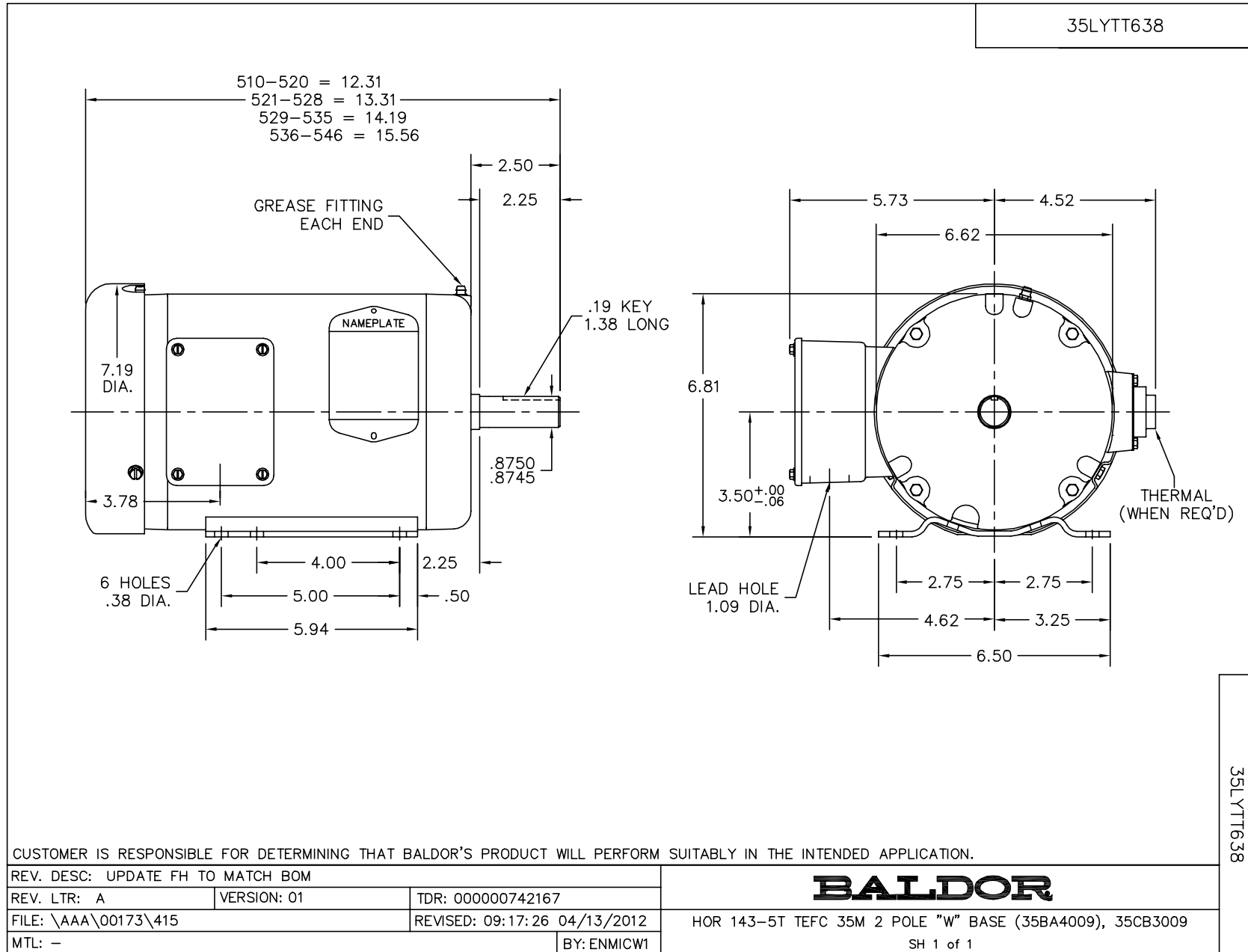
**Performance Data at 400V, 50Hz, 2.0HP (Typical performance - Not guaranteed values)**

General Characteristics			
Full Load Torque:	3.72 LB-FT	Start Configuration:	DOL
No-Load Current:	1.25 Amps	Break-Down Torque:	13.3 LB-FT
Line-line Res. @ 25°C.:	7.07 Ohms A Ph / 0.0 Ohms B Ph	Pull-Up Torque:	8.91 LB-FT
Temp. Rise @ Rated Load:	48 C	Locked-Rotor Torque:	12.1 LB-FT
Temp. Rise @ S.F. Load:		Starting Current:	21.6 Amps

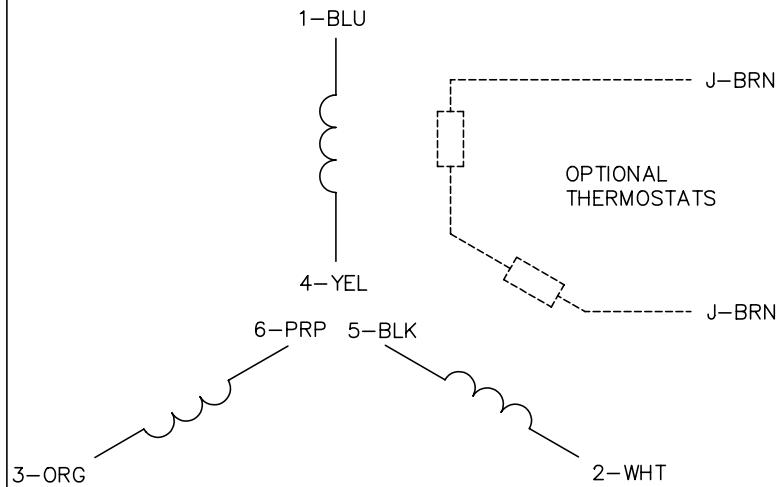
Load Characteristics							
% of Rated Load	25	50	75	100	125	150	S.F.
Power Factor:	55.0	78.0	86.0	88.0	90.0	89.0	0.0
Efficiency:	70.1	79.3	81.8	82.1	81.0	79.1	0.0
Speed:	2962.0	2929.0	2892.0	2853.0	2809.0	2759.0	0.0
Line Amperes:	1.46	1.79	2.35	3.01	3.69	4.48	0.0

Performance Graph at 400V, 50Hz, 2.0HP Typical performance - Not guaranteed values

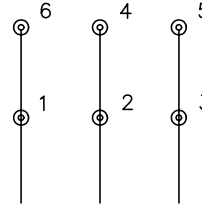




CD0022

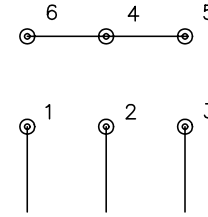


LOW VOLTAGE  
(1D)



LINE

HIGH VOLTAGE  
(1Y)



LINE

NOTES:

1. INTERCHANGE ANY TWO LINE LEADS TO REVERSE ROTATION.
2. OPTIONAL THERMOSTATS ARE PROVIDED WHEN SPECIFIED.
3. ACTUAL NUMBER OF INTERNAL PARALLEL CIRCUITS MAY BE A MULTIPLE OF THOSE SHOWN ABOVE.
4. LEAD COLORS ARE OPTIONAL. LEADS MUST ALWAYS BE NUMBERED AS SHOWN.

REV. DESC: REVISE TO SHOW OPTIONAL COLORS			
REV. LTR: F	BY: JLP	REVISED: 01/21/99 3:54	TDR: 0171435
CD0022		FILE: AAA00005144	MDL: -
		MTL: -	

**BALDOR ELECTRIC Co.**

3PH, DV, 6 LEADS, DELTA/WYE CONNECTION

CD0022