

BALDOR® • **RELIANCE**

Product Information Packet

MVM3458D

.25KW, 1725RPM, 3PH, 60HZ, D71D, 3320M, TEFC

Copyright © All product information within this document is subject to Baldor Electric Company copyright © protection, unless otherwise noted.

Part Detail							
Revision:	Z	Status:	PRD/A	Change #:		Proprietary:	No
Type:	AC	Prod. Type:	3320M	Elec. Spec:	33WG0675	CD Diagram:	
Enclosure:	TEFC	Mfg Plant:		Mech. Spec:	33E138	Layout:	
Frame:	D71D	Mounting:	F2	Poles:	04	Created Date:	06-25-2007
Base:	N	Rotation:	R	Insulation:	B	Eff. Date:	10-26-2012
Leads:	9#18	Literature:		Elec. Diagram:		Replaced By:	

Nameplate NP1379L							
CAT.NO.	MVM3458D						
SPEC.	33E138-0675G1						
IEC FRAME	D71D	K.W.	.25 T TE				
VOLTS	230/460						
AMP	1.4/7						
RPM	1725	I.P.	54				
HZ	60	PH	3	CL	B		
SER.F.	1.35	DES	B	CODE	-		
NEMA-NOM-EFF	74	PF	58				
RATING	40C AMB-CONT						
CC		USABLE AT 208V	1.7				
DE	6203	ODE	6203				
SER. #							
	SFA 1.6/.8						

Parts List		
Part Number	Description	Quantity
SA010531	SA 33E138-0675G1	1.000 EA
RA006883	RA 33E138-0675G1	1.000 EA
LC0005	CONN.DIA.,TY M,9-LD,DUAL VOLT,REVERSING	1.000 EA
34CB3002A16	CB W/.50 N.P.T. @ 6	1.000 EA
34GS1029A01	GASKET, CONDUIT BOX	1.000 EA
51XB1016A07	10-16 X 7/16 HXWSSLD SERTYB	2.000 EA
11XW1032G06	10-32 X .38, TAPTITE II, HEX WSHR SLTD U	1.000 EA
33EP3100A01SP	EP,33AC ODE GP 6203 TEFC W/DRAIN	1.000 EA
HW5109A05	WASHER, WAVE SPRING FOR 40MM BORE SMALLE	1.000 EA
33EP2503A01	33 ENCL. EP MACH. 203 BRG IEC FF130	1.000 EA
51XN1032A20	10-32 X 1 1/4 HX WS SL SR	2.000 EA
33FN3000SP	EXTERNAL FAN, PLASTIC	1.000 EA
12XN0832A16	8-32 X 1.00" SLT HEX HD ZINC PLATED	1.000 EA
HW1003A08	WASHER, #8 EX TH LK, ZN (F/S)	1.000 EA
XY0832A02	8-32 HEX NUT	1.000 EA
33FH4001A01	FAN COVER, STAMPED	1.000 EA
11XT1032A06	10-32 X 3/8 HX WSHR HD SLTD TYPE 23	3.000 EA
34CB4517	CB LID 4 MTG HOLES .22 DIA STAMPED, FOR	1.000 EA
34GS1031A01	GASKET, FLAT CONDUIT BOX LID (LEXIDE)	1.000 EA
51XW0832A07	8-32 X .44, TAPTITE II, HEX WSHR SLTD SE	4.000 EA
HW2504D08	KEY, 5 MM X .875	1.000 EA
ME4000	.375-.75" DIA.#SW-04 WOVEN SHAFT PROTECT	0.125 FT
HW4600A09SP	SEAL 0.656 X 1.124 X 0.250 DOUBLE SHIELD	1.000 EA
MJ5001A01	46-665 RED SEALER	0.001 QT

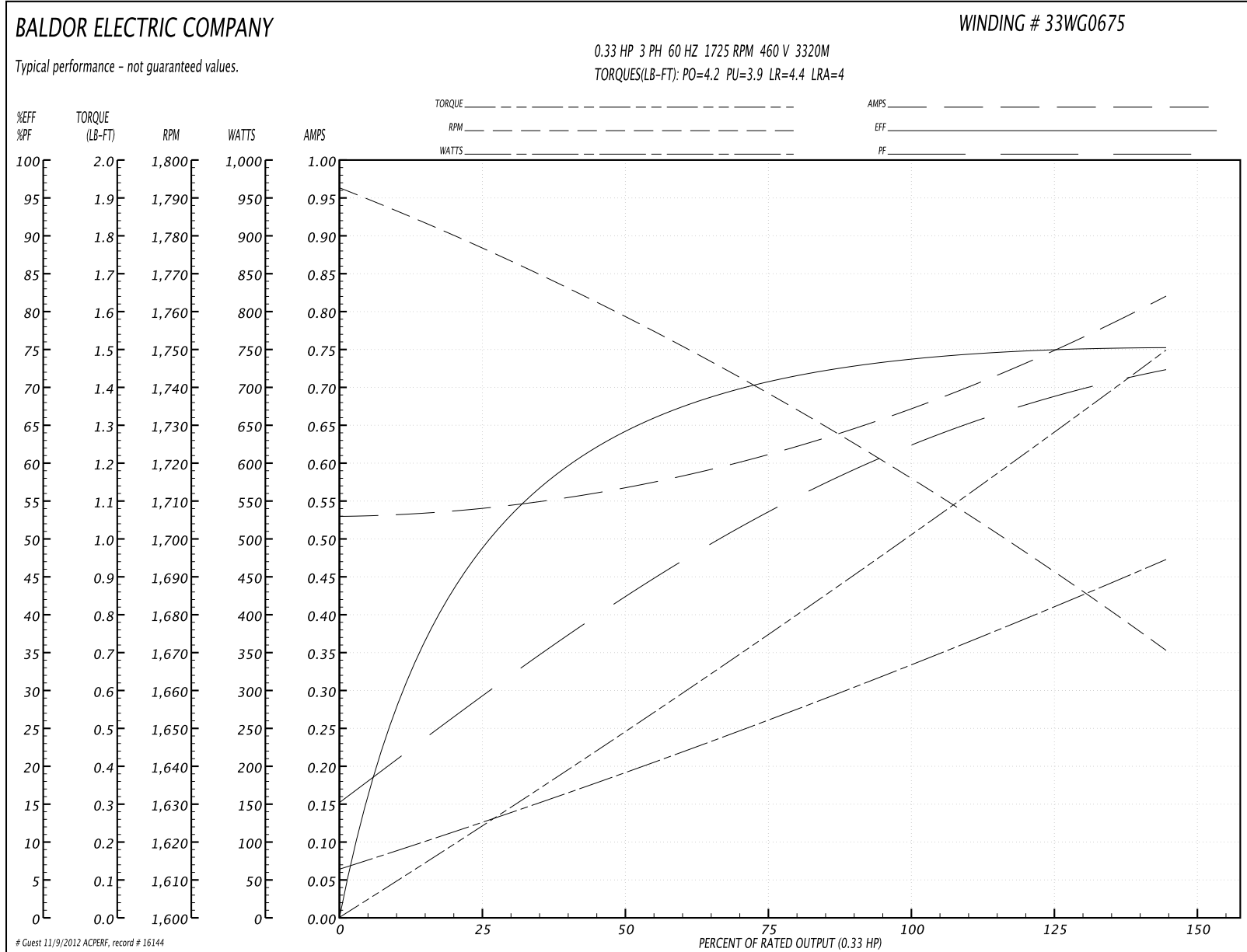
Parts List (continued)		
Part Number	Description	Quantity
MG1000G27	PAINT- S9282E CHARCOAL GREY	0.013 GA
85XU0407S04	4X1/4 U DRIVE PIN STAINLESS	2.000 EA
HA3100A48	THRUBOLT 10-32 X 7.188	2.000 EA
LB5040	INSTRUCTION TAG, AC & DC	1.000 EA
LB1171	LABEL CARTON 6X6 ON LINE BLANK ROLLS	1.000 EA
LC0005E01	CONN.DIA./WARNING LABEL (LC0005/LB1119)	1.000 EA
NP1379L	ALUM IEC UL CSA CC	1.000 EA
PA1501	PACKING GROUP (VERTICAL), BALDOR	1.000 EA

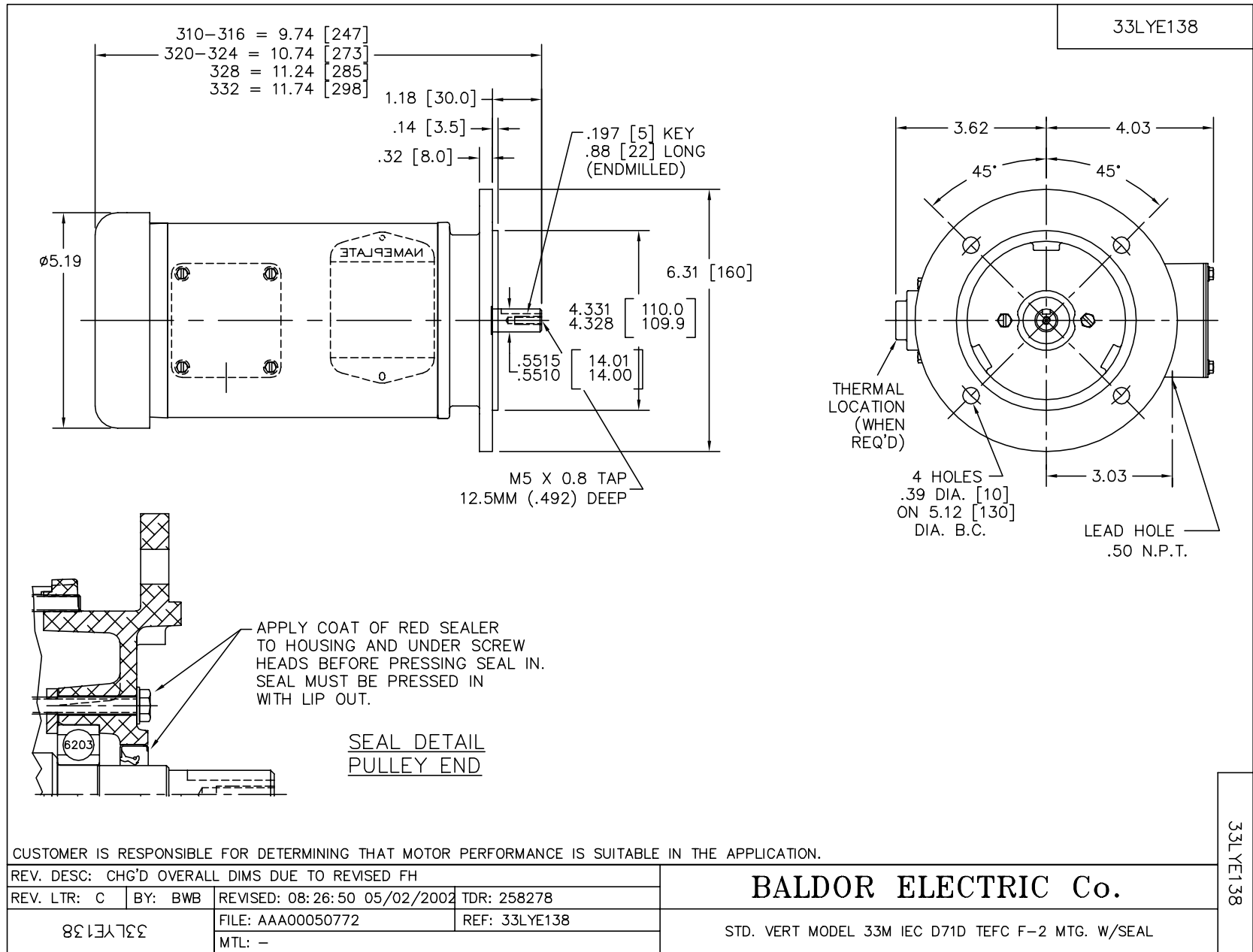
Performance Data at 460V, 60Hz, 0.33HP (Typical performance - Not guaranteed values)

General Characteristics			
Full Load Torque:	1.0 LB-FT	Start Configuration:	DOL
No-Load Current:	0.53 Amps	Break-Down Torque:	4.2 LB-FT
Line-line Res. @ 25°C.:	47.3 Ohms A Ph / 0.0 Ohms B Ph	Pull-Up Torque:	3.9 LB-FT
Temp. Rise @ Rated Load:	56 C	Locked-Rotor Torque:	4.4 LB-FT
Temp. Rise @ S.F. Load:	71 C	Starting Current:	4.0 Amps

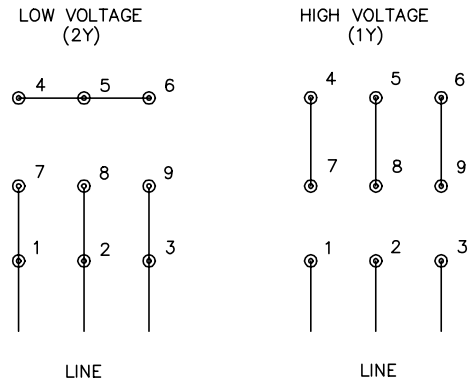
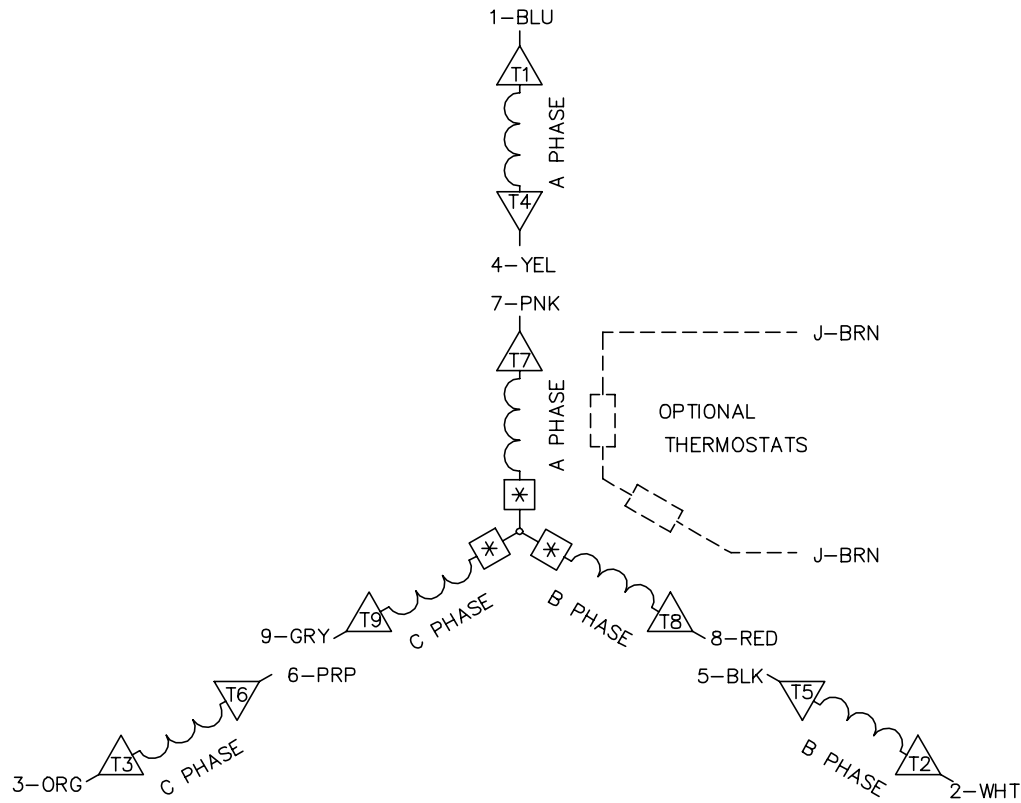
Load Characteristics							
% of Rated Load	25	50	75	100	125	150	S.F.
Power Factor:	29.0	42.0	53.0	62.0	69.0	75.0	72.0
Efficiency:	49.0	64.0	71.0	74.0	75.0	75.0	75.4
Speed:	1776.0	1758.0	1738.0	1717.0	1695.0	1670.0	1686.0
Line Amperes:	0.54	0.57	0.61	0.67	0.74	0.82	0.77

Performance Graph at 460V, 60Hz, 0.33HP Typical performance - Not guaranteed values





CD0005A05



- NOTES:
1. INTERCHANGE ANY TWO LINE LEADS TO REVERSE ROTATION.
 2. OPTIONAL THERMOSTATS ARE PROVIDED WHEN SPECIFIED.
 3. ACTUAL NUMBER OF INTERNAL PARALLEL CIRCUITS MAY BE A MULTIPLE OF THOSE SHOWN ABOVE.
 4. LEAD COLORS ARE OPTIONAL. LEADS MUST ALWAYS BE NUMBERED AS SHOWN.
 5. =MAGNET WIRE COIL END WITH I.D. NUMBER.
 6. =MAGNET WIRE COIL END WITH I.D. SYMBOL.
 7. SEE CW PRINT FOR NEST TO NEST CROSSOVER CONNECTIONS.

CD0005A05

REV. DESC: ADD NEST NOTE			
REV. LTR: C	VERSION: 03	TDR: 000000445597	
CD0005A05	FILE: \CKA\00024\847	REVISED: 12:51:06 11/15/2007	
	MTL: -	BY: CKMICRO	

BALDOR • DODGE • RELIANCE

3PH, DV, 9 LEADS, CK