

BALDOR® • ***RELIANCE***

Product Information Packet

PCL3514M

1.5HP, 1725RPM, 1PH, 60HZ, 56C, 3535LC, TEFC

Copyright © All product information within this document is subject to Baldor Electric Company copyright © protection, unless otherwise noted.

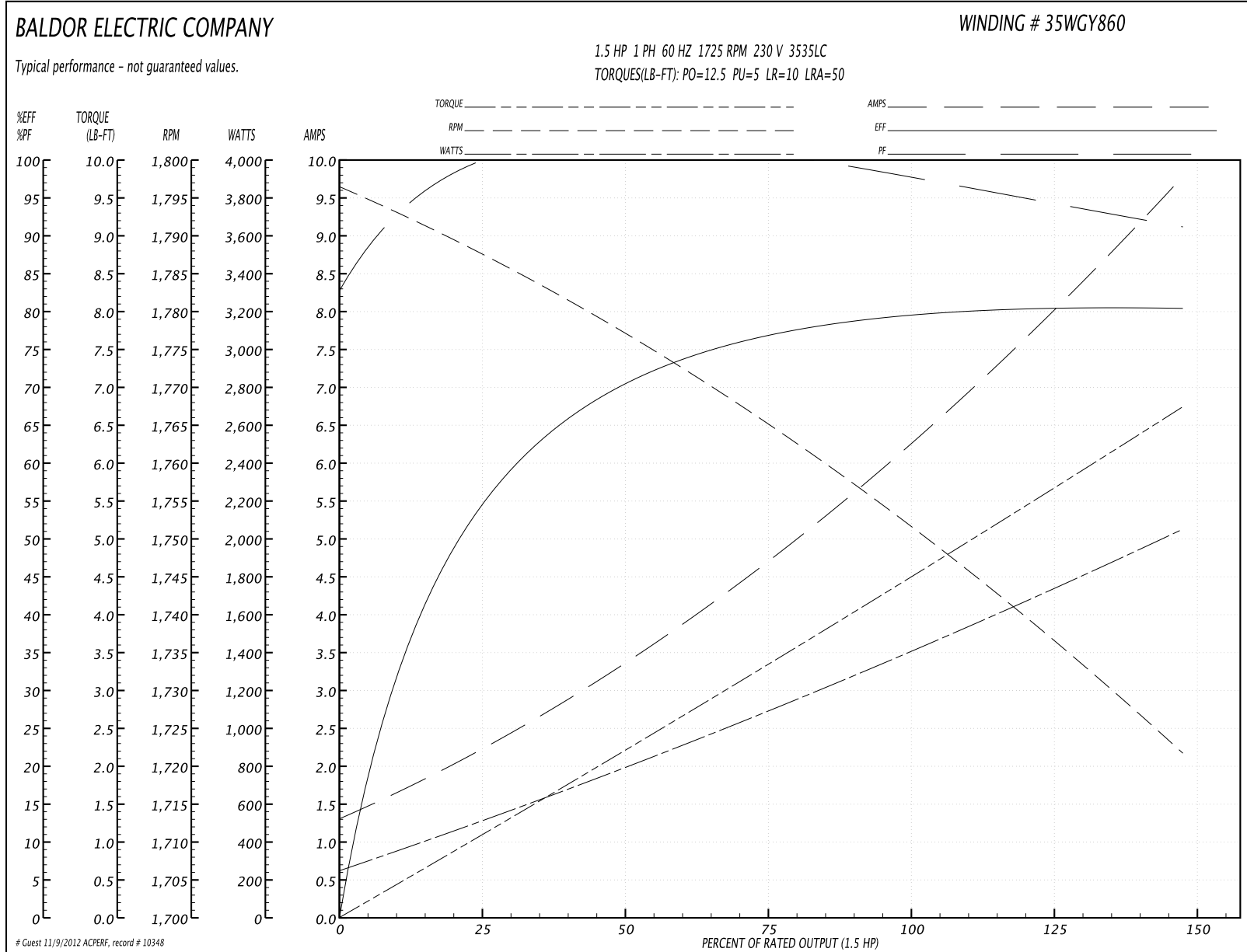
Part Detail									
Revision:	AQ	Status:	PRD/A	Change #:		Proprietary:	No		
Type:	AC	Prod. Type:	3535LC	Elec. Spec:	35WGY860	CD Diagram:			
Enclosure:	TEFC	Mfg Plant:		Mech. Spec:	35K358	Layout:			
Frame:	56C	Mounting:	F1	Poles:	04	Created Date:			
Base:	RG	Rotation:	R	Insulation:	B	Eff. Date:	02-28-2012		
Leads:	7#18,1#14 #4TH	Literature:		Elec. Diagram:		Replaced By:			
Nameplate NP1257L									
CAT.NO.	PCL3514M								
SPEC.	35K358Y860								
HP	1.5								
VOLTS	115/230								
AMP	14/6								
RPM	1725								
FRAME	56C	HZ	60			PH	1		
SER.F.	1.15	CODE	J			DES	L	CL	B
NEMA-NOM-EFF	82.5	PF	98						
RATING	40C AMB-CONT								
CC				USABLE AT 208V					
DE	6205	ODE	6203						
ENCL	TEFC	SN							

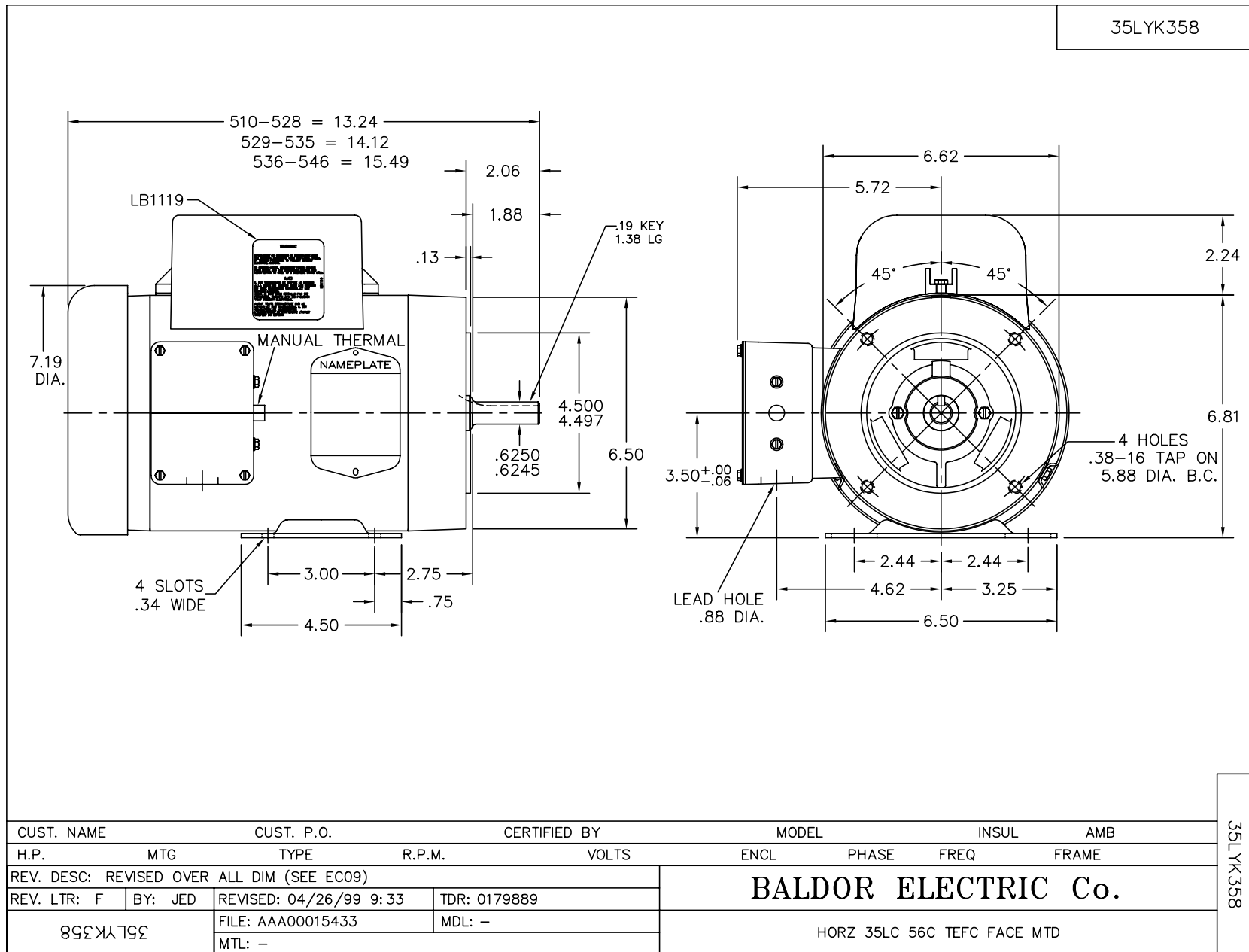
Parts List		
Part Number	Description	Quantity
SA026329	SA 35K358Y860	1.000 EA
RA022379	RA 35K358Y860	1.000 EA
OC3035F09SP	CYL OIL CAP 35MFD/370V	1.000 EA
TPCRT40CA	THERMAL 1PH 1.00 MAN 105C	1.000 EA
EC1540A04	ELEC CAP, 540-648 MFD, 125V, 1.81D X 4.	1.000 EA
WD3006A01	RSS-2-103JT 2W 10K RES. METAL OXIDE 5%	1.000 EA
TP5059	GENERIC THERMAL KIT	1.000 EA
NS2512A01	INSULATOR, CONDUIT BOX X	1.000 EA
35CB3007A17	35 CB .88 DIA @ 6:00, 1.00 MTO @ 3:00	1.000 EA
36GS1000SP	GASKET-CONDUIT BOX, .06 THICK #SV-330 LE	1.000 EA
51XB1016A07	10-16 X 7/16 HXWSSLD SERTYB	2.000 EA
HA6015A02	THERMAL RETAINER (PLATED)	1.000 EA
NS2500A02	INSULATOR, MAN THER PROT	1.000 EA
51XB1214A10	12-14 X 5/8HX WS SL SR TYBX	2.000 EA
11XW1032G06	10-32 X .38, TAPTITE II, HEX WSHR SLTD U	1.000 EA
51XW0832A07	8-32 X .44, TAPTITE II, HEX WSHR SLTD SE	2.000 EA
35EP3100M02	FREP TEFC 203 BRG W/O GRSR (RAISED FH MT	1.000 EA
NS2501A02	INSULATOR, CAPACITOR BOX	1.000 EA
35CB3801SP	CAPACITOR COVER, CAST	1.000 EA
34GS3002	GASKET, CAPACITOR BOX	1.000 EA
51XB1016A08	10-16X 1/2HXWSSLD SERTYB	2.000 EA
HA7010	CAPACITOR RETENTION CLAMP	1.000 EA
HW5100A03SP	WAVY WASHER (W1543-017)	1.000 EA
35EP3300A33	SPL FACE MTD EP -ENCL-205 BRG	1.000 EA

Parts List (continued)		
Part Number	Description	Quantity
51XN1032A20	10-32 X 1 1/4 HX WS SL SR	2.000 EA
35FN3002A05SP	EXFN, PLASTIC, 6.376 OD, .638 ID	1.000 EA
51XB1214A16	12-14X1.00 HXWSSLD SERTYB	1.000 EA
51XW1032A06	10-32 X .38, TAPTITE II, HEX WSHR SLTD S	3.000 EA
35CB4521GX	CONDUIT BOX LID KIT	1.000 EA
51XW0832A07	8-32 X .44, TAPTITE II, HEX WSHR SLTD SE	4.000 EA
HW2501D13SP	KEY, 3/16 SQ X 1.375	1.000 EA
HA7000A04	KEY RETAINER 0.625 DIA SHAFTS	1.000 EA
85XU0407S04	4X1/4 U DRIVE PIN STAINLESS	2.000 EA
WD1000A15	3-520132-2 AMP FLAG (4M/RL NON-CANC/NON-	2.000 EA
MJ1000A75	GREASE, POLYREX EM EXXON	0.050 LB
35FH4005A32SP	IEC FH NO GRSR W/3 HOLES - W/AUTOPHERETI	1.000 EA
MG1000G27	PAINT- S9282E CHARCOAL GREY	0.017 GA
LC0016	CONNECTION LABEL	1.000 EA
NP1257L	ALUM UL CSA CC THERMAL REV MTG	1.000 EA
HA3100A18	THRUBOLT 10-32 X 9.250	4.000 EA
SP5181A03	MODEL 35 LC TORQ STAT SWITCH LEAD ASSY	1.000 EA
LB1087	LABEL,MANUAL RESET (ROLL LABEL)	1.000 EA
LB1119	WARNING LABEL	1.000 EA
LB1125C01	STD (STOCK) CARTON LABEL BALDOR WITH FLA	1.000 EA
36PA1000	PACK GROUP W/LB5001	1.000 EA

Performance Data at 230V, 60Hz, 1.5HP (Typical performance - Not guaranteed values)							
General Characteristics							
Full Load Torque:	4.5 LB-FT			Start Configuration:	DOL		
No-Load Current:	1.3 Amps			Break-Down Torque:	12.5 LB-FT		
Line-line Res. @ 25°C.:	1.7 Ohms A Ph / 2.03 Ohms B Ph			Pull-Up Torque:	5.0 LB-FT		
Temp. Rise @ Rated Load:	60 C			Locked-Rotor Torque:	10.0 LB-FT		
Temp. Rise @ S.F. Load:	66 C			Starting Current:	50.0 Amps		
Load Characteristics							
% of Rated Load	25	50	75	100	125	150	S.F.
Power Factor:	97.0	99.0	99.0	97.0	94.0	92.0	95.0
Efficiency:	54.0	70.0	77.0	80.0	81.0	80.0	80.6
Speed:	1787.0	1776.0	1765.0	1752.0	1738.0	1721.0	1744.0
Line Amperes:	2.3	3.3	4.8	6.3	7.9	9.8	7.26

Performance Graph at 230V, 60Hz, 1.5HP Typical performance - Not guaranteed values

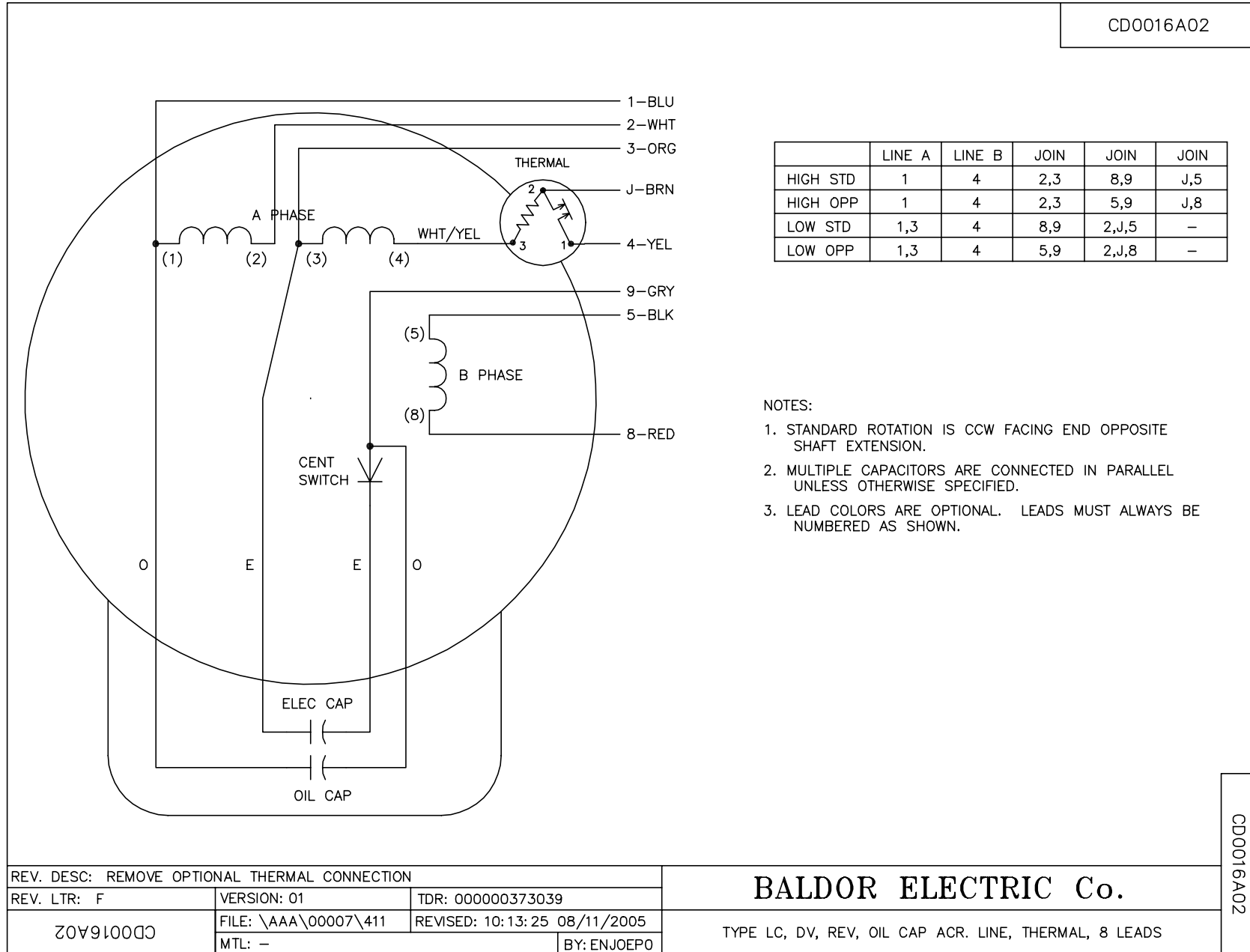




CUST. NAME		CUST. P.O.		CERTIFIED BY		MODEL		INSUL		AMB	
H.P.		MTG		TYPE		R.P.M.		VOLTS		ENCL	
PHASE		FREQ		FRAME							
REV. DESC: REVISED OVER ALL DIM (SEE EC09)											
REV. LTR: F		BY: JED		REVISED: 04/26/99 9:33		TDR: 0179889					
859XJ798				FILE: AAA00015433		MDL: -					
				MTL: -		BALDOR ELECTRIC Co.					
						HORZ 35LC 56C TEFC FACE MTD					

35LYK358

CD0016A02



REV. DESC: REMOVE OPTIONAL THERMAL CONNECTION		
REV. LTR: F	VERSION: 01	TDR: 000000373039
CD0016A02	FILE: \AAA\00007\411	REVISED: 10:13:25 08/11/2005
	MTL: -	BY: ENJOEPO

BALDOR ELECTRIC Co.

TYPE LC, DV, REV, OIL CAP ACR. LINE, THERMAL, 8 LEADS

CD0016A02