

BALDOR® • ***RELIANCE***

Product Information Packet

PL1326M

3HP,3450RPM,1PH,60HZ,56,3532LC,OPEN,F1

Copyright © All product information within this document is subject to Baldor Electric Company copyright © protection, unless otherwise noted.

Part Detail							
Revision:	Q	Status:	PRD/A	Change #:		Proprietary:	No
Type:	AC	Prod. Type:	3532LC	Elec. Spec:	35WGY771	CD Diagram:	
Enclosure:	OPEN	Mfg Plant:		Mech. Spec:	35T963	Layout:	
Frame:	56	Mounting:	F1	Poles:	02	Created Date:	06-22-2007
Base:	RG	Rotation:	R	Insulation:	B	Eff. Date:	07-18-2012
Leads:	2#14 A PH,3#18 B&J	Literature:		Elec. Diagram:		Replaced By:	

Nameplate NP1257L										
CAT.NO.	PL1326M									
SPEC.	35T963Y771									
HP	3									
VOLTS	230									
AMP	12.5									
RPM	3450									
FRAME	56	HZ				60	PH	1		
SER.F.	1.15	CODE				G	DES	L	CL	B
NEMA-NOM-EFF	85.5	PF				95				
RATING	40C AMB-CONT									
CC					USABLE AT 208V		13.7			
DE	6205	ODE				6203				
ENCL	OPEN	SN								

Parts List		
Part Number	Description	Quantity
SA111048	SA 35T963Y771	1.000 EA
RA102427	RA 35T963Y771	1.000 EA
OC3035F09SP	CYL OIL CAP 35MFD/370V	1.000 EA
TPBRT41DB	THERMAL 1PH 1.25 MAN 120CWELDED	1.000 EA
EC1216C06SP	ELEC CAP, 216-259 MFD, 250V, 2.06D X 4.	1.000 EA
WD3006A01	RSS-2-103JT 2W 10K RES. METAL OXIDE 5%	1.000 EA
TP5059	GENERIC THERMAL KIT	1.000 EA
NS2512A01	INSULATOR, CONDUIT BOX X	1.000 EA
35CB3008A16	35 CB .50 NPT @ 6:00, 1.25 MTO @ 3:00	1.000 EA
51XB1016A07	10-16 X 7/16 HXWSSLD SERTYB	2.000 EA
11XW1032G06	10-32 X .38, TAPTITE II, HEX WSHR SLTD U	1.000 EA
35EP3201A03	STD FR EP OPEN-203BRG-35L OR M FRAME--LE	1.000 EA
51XW0832A07	8-32 X .44, TAPTITE II, HEX WSHR SLTD SE	2.000 EA
35CB3801SP	CAPACITOR COVER, CAST	1.000 EA
HA7010	CAPACITOR RETENTION CLAMP	1.000 EA
NS2501A02	INSULATOR, CAPACITOR BOX	1.000 EA
51XB1016A08	10-16X 1/2HXWSSLD SERTYB	2.000 EA
HW5100A03SP	WAVY WASHER (W1543-017)	1.000 EA
35EP3200A02	STD PU ENDPLATE-OPEN-205 BRG	1.000 EA
XY1032A02	10-32 HEX NUT DIRECTIONAL SERRATION	4.000 EA
35CB4521	35 LIPPED CB LID (GALV & PHOSPH)	1.000 EA
51XW0832A07	8-32 X .44, TAPTITE II, HEX WSHR SLTD SE	4.000 EA
HW2501D13SP	KEY, 3/16 SQ X 1.375	1.000 EA
HA7000A04	KEY RETAINER 0.625 DIA SHAFTS	1.000 EA

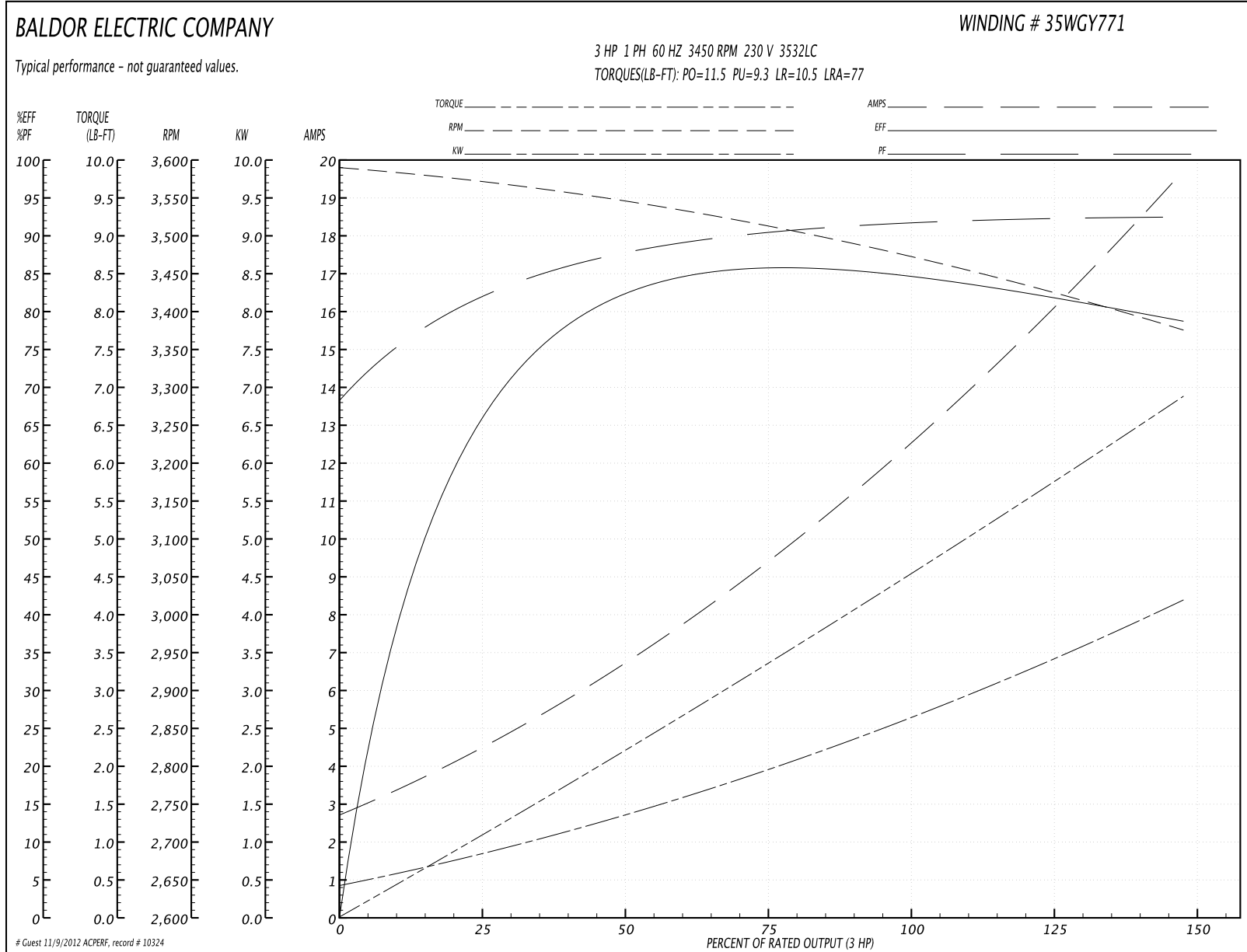
Parts List (continued)		
Part Number	Description	Quantity
85XU0407S04	4X1/4 U DRIVE PIN STAINLESS	2.000 EA
WD1000A15	3-520132-2 AMP FLAG (4M/RL NON-CANC/NON-	4.000 EA
MJ1000A75	GREASE, POLYREX EM EXXON	0.050 LB
MG1000G27	PAINT- S9282E CHARCOAL GREY	0.017 GA
SP5181A28	MODEL 35 LC TORQ STAT SWITCH LEAD ASSY	1.000 EA
LB1087	LABEL,MANUAL RESET (ROLL LABEL)	1.000 EA
HA3100A22	THRUBOLT 10-32 X 10.125	4.000 EA
LB1119	WARNING LABEL	1.000 EA
LB1125C01	STD (STOCK) CARTON LABEL BALDOR WITH FLA	1.000 EA
LC0002	CONNECTION LABEL	1.000 EA
NP1257L	ALUM UL CSA CC THERMAL REV MTG	1.000 EA
35PA1066	PACKING GROUP COMBINED PRINT	1.000 EA

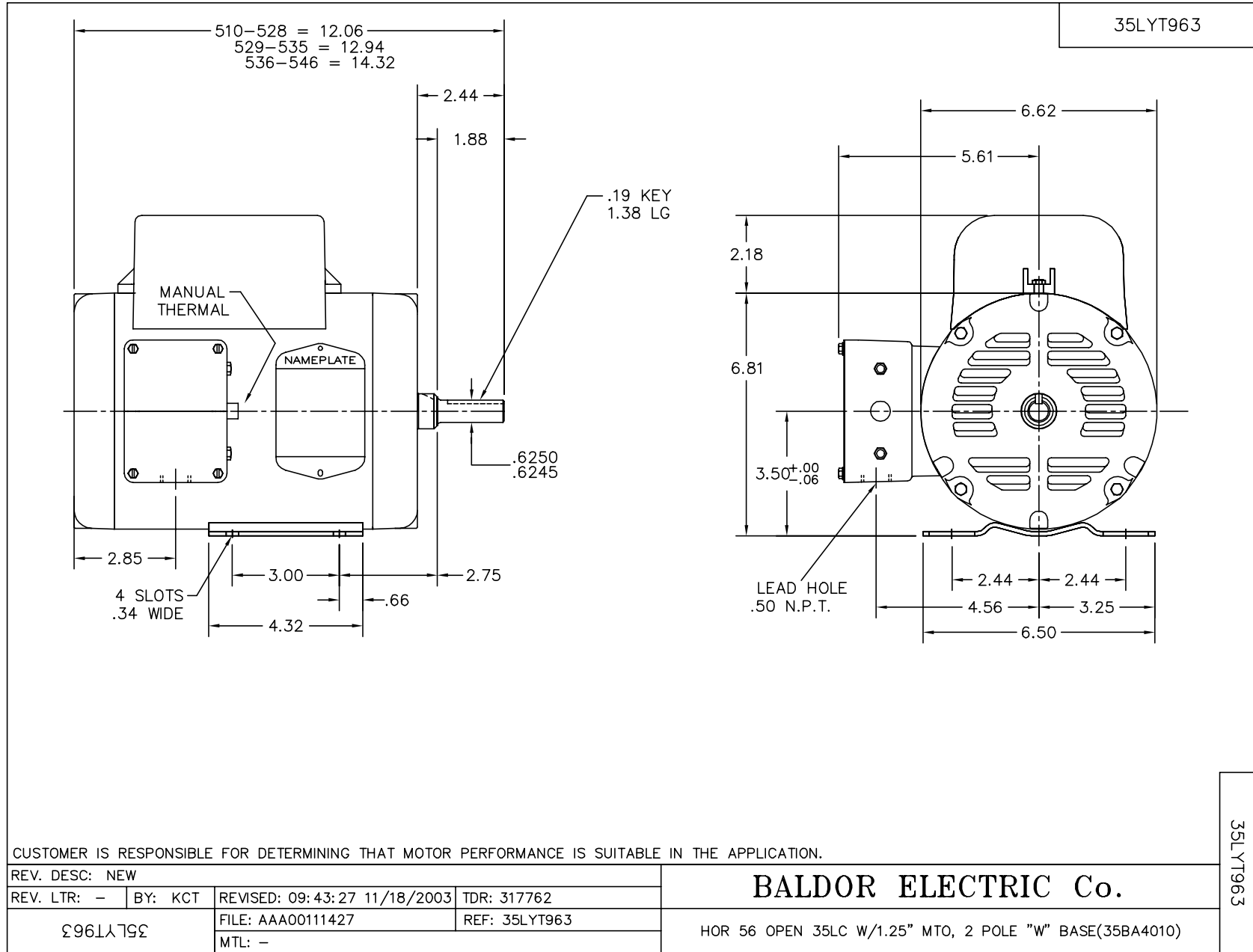
Accessories		
Part Number	Description	Multiplier
35-8764	C FACE KIT	A8
35EP1604A01SP	D-FLANGE KIT	A8

Performance Data at 230V, 60Hz, 3.0HP (Typical performance - Not guaranteed values)

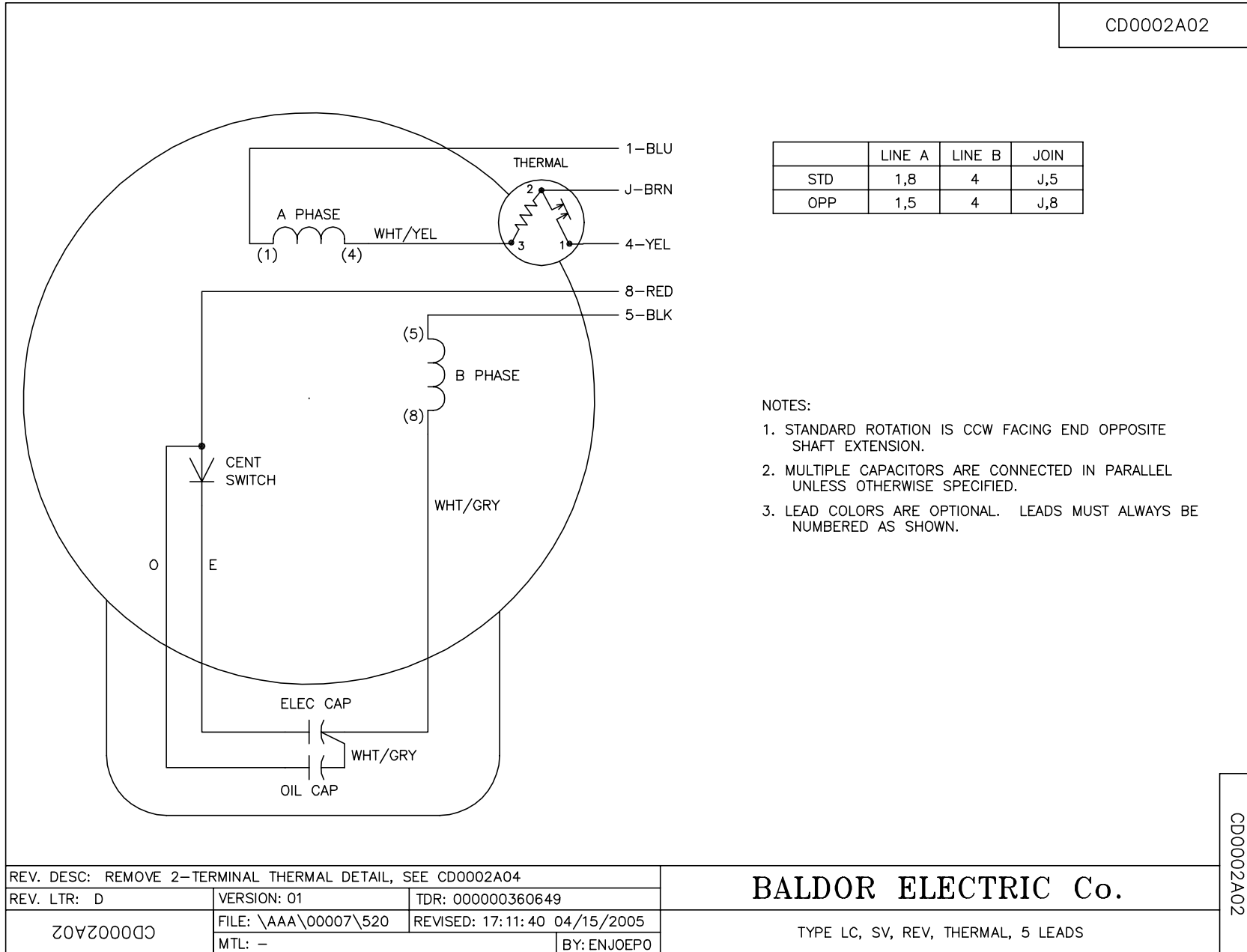
General Characteristics							
Full Load Torque:	4.6 LB-FT			Start Configuration:	DOL		
No-Load Current:	2.6 Amps			Break-Down Torque:	11.5 LB-FT		
Line-line Res. @ 25°C.:	3.06 Ohms A Ph / 1.45 Ohms B Ph			Pull-Up Torque:	9.3 LB-FT		
Temp. Rise @ Rated Load:	47 C			Locked-Rotor Torque:	10.5 LB-FT		
Temp. Rise @ S.F. Load:	56 C			Starting Current:	77.0 Amps		
Load Characteristics							
% of Rated Load	25	50	75	100	125	150	S.F.
Power Factor:	76.0	87.0	92.0	92.0	93.0	92.0	93.0
Efficiency:	72.0	80.0	85.0	85.5	82.0	78.5	85.0
Speed:	3565.0	3540.0	3510.0	3475.0	3430.0	3370.0	3455.0
Line Amperes:	4.6	7.2	9.6	12.5	16.0	19.9	14.4

Performance Graph at 230V, 60Hz, 3.0HP Typical performance - Not guaranteed values





CD0002A02



CD0002A02

REV. DESC: REMOVE 2-TERMINAL THERMAL DETAIL, SEE CD0002A04		
REV. LTR: D	VERSION: 01	TDR: 000000360649
Z0VZ00003 CD0002A02	FILE: \AAA\00007\520	REVISED: 17:11:40 04/15/2005
	MTL: -	BY: ENJOEPO

BALDOR ELECTRIC Co.

TYPE LC, SV, REV, THERMAL, 5 LEADS