

BALDOR® • RELIANCE

Product Information Packet

RL1310A

1HP,1725RPM,1PH,60HZ,56/56H,3520L,OPEN

Copyright © All product information within this document is subject to Baldor Electric Company copyright © protection, unless otherwise noted.

Part Detail							
Revision:	AK	Status:	PRD/A	Change #:		Proprietary:	No
Type:	AC	Prod. Type:	3520L	Elec. Spec:	35WGW053	CD Diagram:	
Enclosure:	OPEN	Mfg Plant:		Mech. Spec:	35E410	Layout:	
Frame:	56/56H	Mounting:	F1	Poles:	04	Created Date:	
Base:	RS	Rotation:	RS	Insulation:	B	Eff. Date:	07-18-2012
Leads:	4#16 A&J,2#18 B PH,1#	Literature:		Elec. Diagram:		Replaced By:	

Nameplate NP1257L

CAT.NO.	RL1310A						
SPEC.	35E410W53						
HP	1						
VOLTS	115/230						
AMP	13.4/6.7						
RPM	1725						
FRAME	56/56H	HZ	60	PH	1		
SER.F.	1.15	CODE	K	DES	N	CL	B
NEMA-NOM-EFF	66	PF	72				
RATING	40C AMB-CONT						
CC	USABLE AT 208V			7.4			
DE	6203	ODE	6203				
ENCL	OPEN	SN					

Parts List		
Part Number	Description	Quantity
SA024170	SA 35E410W53	1.000 EA
RA020220	RA 35E410W53	1.000 EA
EC1400A03SP	ELEC CAP, 400-480 MFD, 125V, 1.81D X 3.	1.000 EA
TP5059	GENERIC THERMAL KIT	1.000 EA
35CB4500SP	TERMINAL BOX LID STAMPED	1.000 EA
51XW0832A07	8-32 X .44, TAPTITE II, HEX WSHR SLTD SE	2.000 EA
53XT0832G07	8-32X7/16 PN STD SR TY23G X	1.000 EA
LD5000A01	LEAD ASSY, ML1400DF14 W/(2) #10 RING 7"	1.000 EA
51XW1032A06	10-32 X .38, TAPTITE II, HEX WSHR SLTD S	2.000 EA
HW1003A10	WASHER, #10 EX TH LK, ZN X	2.000 EA
35EP3202A01	STD OPEN FR EP - RESILIENT MTD	1.000 EA
51XW0832A07	8-32 X .44, TAPTITE II, HEX WSHR SLTD SE	3.000 EA
RM1000A02SP	CUSHION RING, MODEL 35 SAME AS A07	1.000 EA
35CB4802A02SP	CAPACITOR COVER, STAMPED X W/AUTOPHORET	1.000 EA
HA6005A01	CLAMP, BASE	2.000 EA
12XN1032A18	10-32 X 1 1/4 HEX HD SLTD	1.000 EA
XY1032A02	10-32 HEX NUT DIRECTIONAL SERRATION	1.000 EA
XY1032A02	10-32 HEX NUT DIRECTIONAL SERRATION	1.000 EA
NS2501A01	INSULATOR, CAPACITOR	1.000 EA
51XB1016A05	10-16X5/16HX WA SL SR TYB (F/S)	2.000 EA
HW5100A03SP	WAVY WASHER (W1543-017)	1.000 EA
35EP3203A01	STD PU EP, OPEN RESIL MTG	1.000 EA
RM1000A02SP	CUSHION RING, MODEL 35 SAME AS A07	1.000 EA
HA6005A01	CLAMP, BASE	2.000 EA

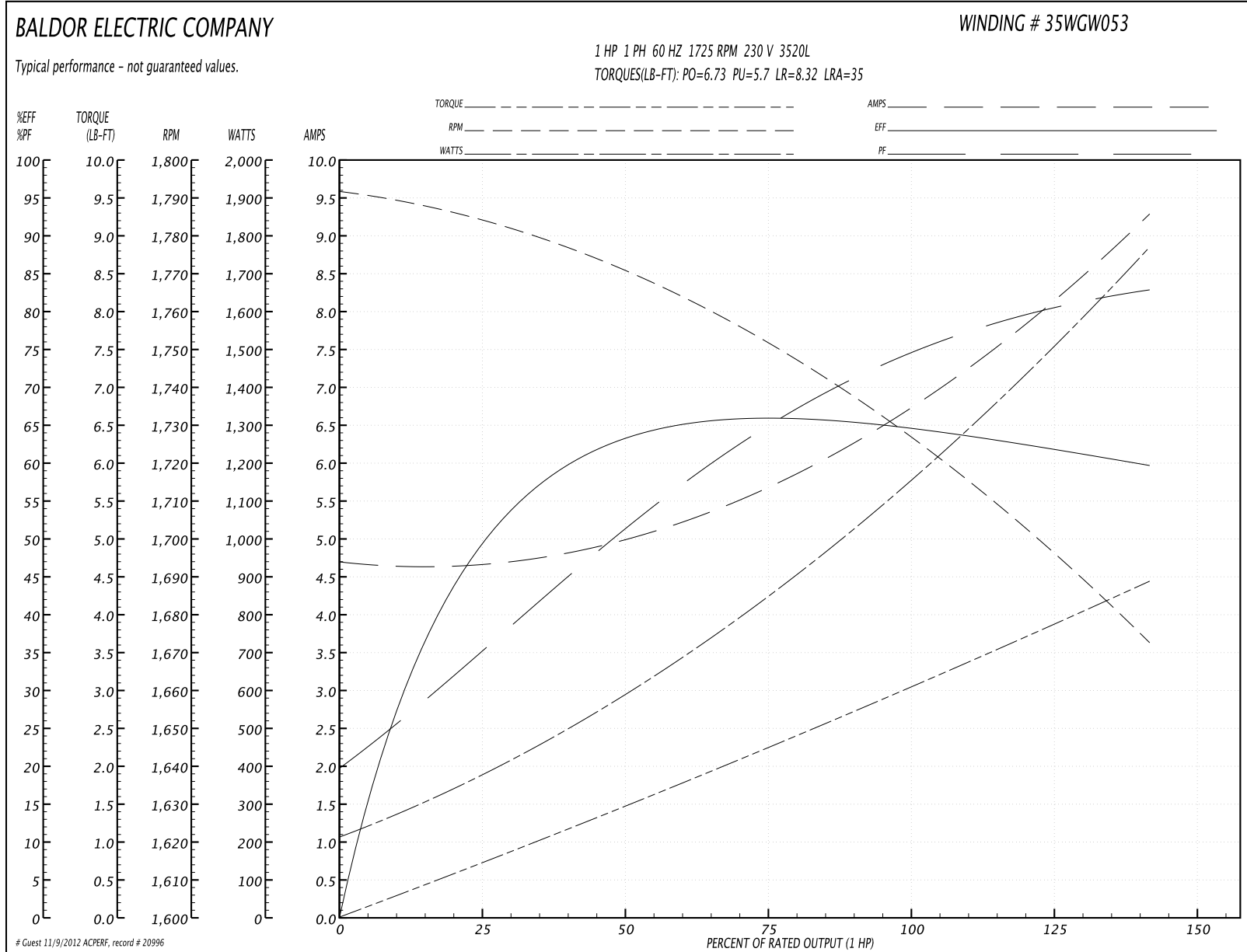
Parts List (continued)		
Part Number	Description	Quantity
12XN1032A18	10-32 X 1 1/4 HEX HD SLTD	1.000 EA
XY1032A02	10-32 HEX NUT DIRECTIONAL SERRATION	4.000 EA
HW2501D13SP	KEY, 3/16 SQ X 1.375	1.000 EA
HA7000A04	KEY RETAINER 0.625 DIA SHAFTS	1.000 EA
85XU0407S04	4X1/4 U DRIVE PIN STAINLESS	2.000 EA
WD4100A01	DP-875 HEYCO PLUG OR 62MP0875 MICRO PLAS	1.000 EA
MJ1000A75	GREASE, POLYREX EM EXXON	0.050 LB
MG1000G27	PAINT- S9282E CHARCOAL GREY	0.017 GA
35BA4002A01	RESILIENT BASE, STAMPED	1.000 EA
SP5066A01	MODEL 35 TERMINAL PANEL SWITCH WITH LEAD	1.000 EA
HA3100A28	THRUBOLT 10-32 X 8.187	4.000 EA
LB1118	LABEL,WARNING (ROLL LABEL)	1.000 EA
LB1125C01	STD (STOCK) CARTON LABEL BALDOR WITH FLA	1.000 EA
LC0052	CONNECTION LABEL	1.000 EA
NP1257L	ALUM UL CSA CC THERMAL REV MTG	1.000 EA
35PA1067	PACK GROUP COMBINED PRINT WITH OSB BASE	1.000 EA

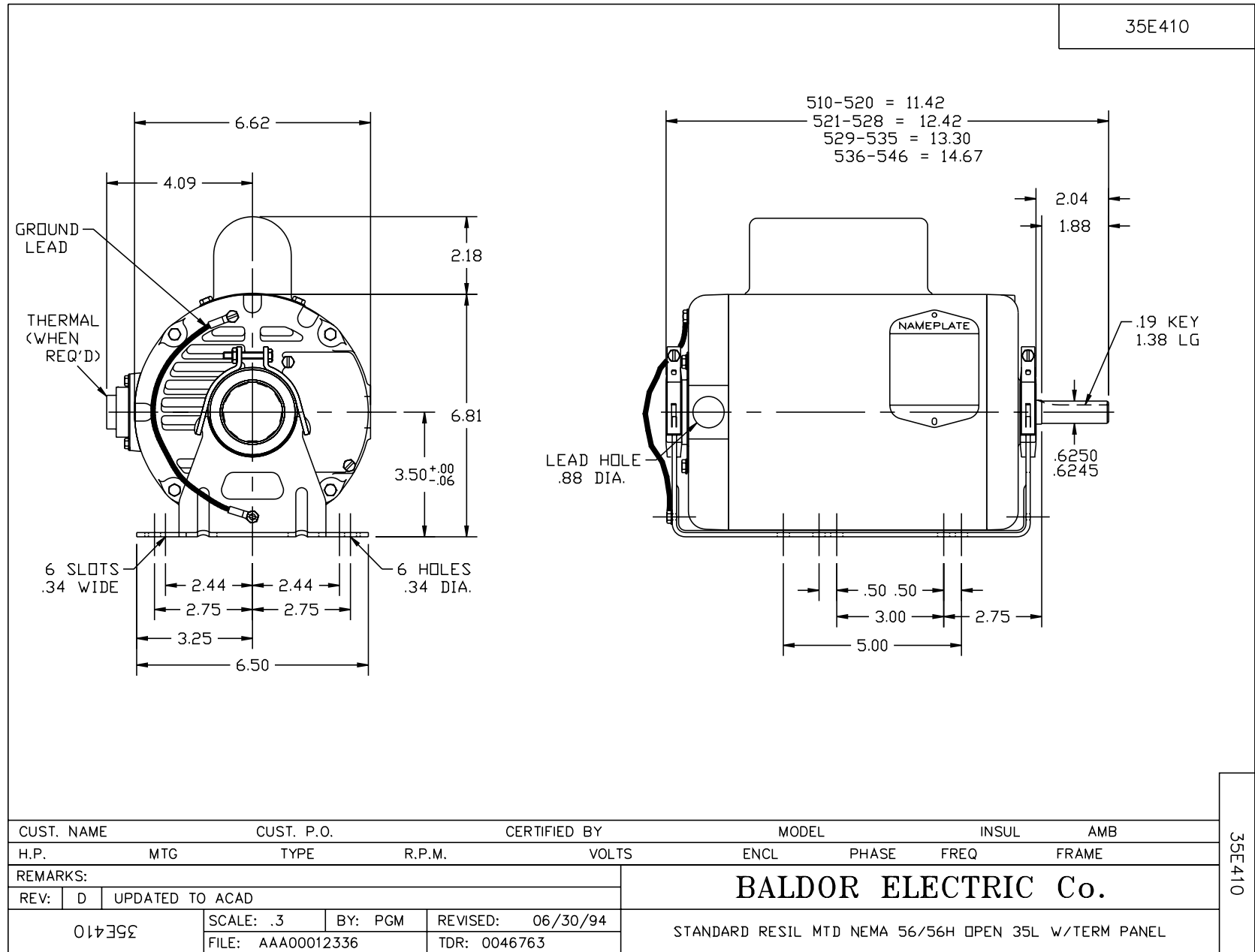
Performance Data at 230V, 60Hz, 1.0HP (Typical performance - Not guaranteed values)

General Characteristics			
Full Load Torque:	2.97 LB-FT	Start Configuration:	DOL
No-Load Current:	4.65 Amps	Break-Down Torque:	6.73 LB-FT
Line-line Res. @ 25°C.:	3.1 Ohms A Ph / 1.76 Ohms B Ph	Pull-Up Torque:	5.7 LB-FT
Temp. Rise @ Rated Load:		Locked-Rotor Torque:	8.32 LB-FT
Temp. Rise @ S.F. Load:		Starting Current:	35.0 Amps

Load Characteristics							
% of Rated Load	25	50	75	100	125	150	S.F.
Power Factor:	37.0	52.0	65.0	74.0	81.0	85.0	78.0
Efficiency:	48.9	61.3	65.5	65.9	63.1	59.1	64.2
Speed:	1782.0	1768.0	1752.0	1733.0	1704.0	1670.0	1716.0
Line Amperes:	4.71	5.03	5.7	6.52	7.84	9.34	7.31

Performance Graph at 230V, 60Hz, 1.0HP Typical performance - Not guaranteed values





CD0052

