

# **BALDOR**® • **RELIANCE**

## **Product Information Packet**

# **RM3154A**

**1.5HP,1735RPM,3PH,60HZ,56H,3520M,OPEN,F1**

Copyright © All product information within this document is subject to Baldor Electric Company copyright © protection, unless otherwise noted.

Part Detail									
Revision:	C	Status:	PRD/A	Change #:		Proprietary:	No		
Type:	AC	Prod. Type:	3520M	Elec. Spec:	35WGM583	CD Diagram:			
Enclosure:	OPEN	Mfg Plant:		Mech. Spec:	35E411	Layout:			
Frame:	56H	Mounting:	F1	Poles:	04	Created Date:	11-23-2010		
Base:	RS	Rotation:	R	Insulation:	F	Eff. Date:	06-17-2011		
Leads:	12#18	Literature:		Elec. Diagram:		Replaced By:			
Nameplate NP1257L									
CAT.NO.	RM3154A								
SPEC.	35E411M583G1								
HP	1.5								
VOLTS	208-230/460								
AMP	5-4.6/2.3								
RPM	1735								
FRAME	56H	HZ	60			PH	3		
SER.F.	1.15	CODE	L			DES	B	CL	F
NEMA-NOM-EFF	81.5	PF	74						
RATING	40C AMB-CONT								
CC				USABLE AT 208V					
DE	6203	ODE	6203						
ENCL	OPEN	SN							

Parts List		
Part Number	Description	Quantity
SA212727	SA 35E411M583G1	1.000 EA
RA199956	RA 35E411M583G1	1.000 EA
53XT0832G07	8-32X7/16 PN STD SR TY23G X	1.000 EA
LD5000A01	LEAD ASSY, ML1400DF14 W/(2) #10 RING 7"	1.000 EA
51XW1032A06	10-32 X .38, TAPTITE II, HEX WSHR SLTD S	2.000 EA
HW1003A10	WASHER, #10 EX TH LK, ZN X	2.000 EA
35EP3202A01	STD OPEN FR EP - RESILIENT MTD	1.000 EA
RM1000A02SP	CUSHION RING, MODEL 35 SAME AS A07	1.000 EA
HA6005A01	CLAMP, BASE	2.000 EA
12XN1032A18	10-32 X 1 1/4 HEX HD SLTD	1.000 EA
XY1032A02	10-32 HEX NUT DIRECTIONAL SERRATION	1.000 EA
51XW0832A07	8-32 X .44, TAPTITE II, HEX WSHR SLTD SE	3.000 EA
HW5100A03SP	WAVY WASHER (W1543-017)	1.000 EA
35EP3203A01	STD PU EP, OPEN RESIL MTG	1.000 EA
XY1032A02	10-32 HEX NUT DIRECTIONAL SERRATION	4.000 EA
RM1000A02SP	CUSHION RING, MODEL 35 SAME AS A07	1.000 EA
HA6005A01	CLAMP, BASE	2.000 EA
12XN1032A18	10-32 X 1 1/4 HEX HD SLTD	1.000 EA
XY1032A02	10-32 HEX NUT DIRECTIONAL SERRATION	1.000 EA
35CB4500SP	TERMINAL BOX LID STAMPED	1.000 EA
51XW0832A07	8-32 X .44, TAPTITE II, HEX WSHR SLTD SE	2.000 EA
HW2501D13SP	KEY, 3/16 SQ X 1.375	1.000 EA
HA7000A04	KEY RETAINER 0.625 DIA SHAFTS	1.000 EA
85XU0407S04	4X1/4 U DRIVE PIN STAINLESS	2.000 EA

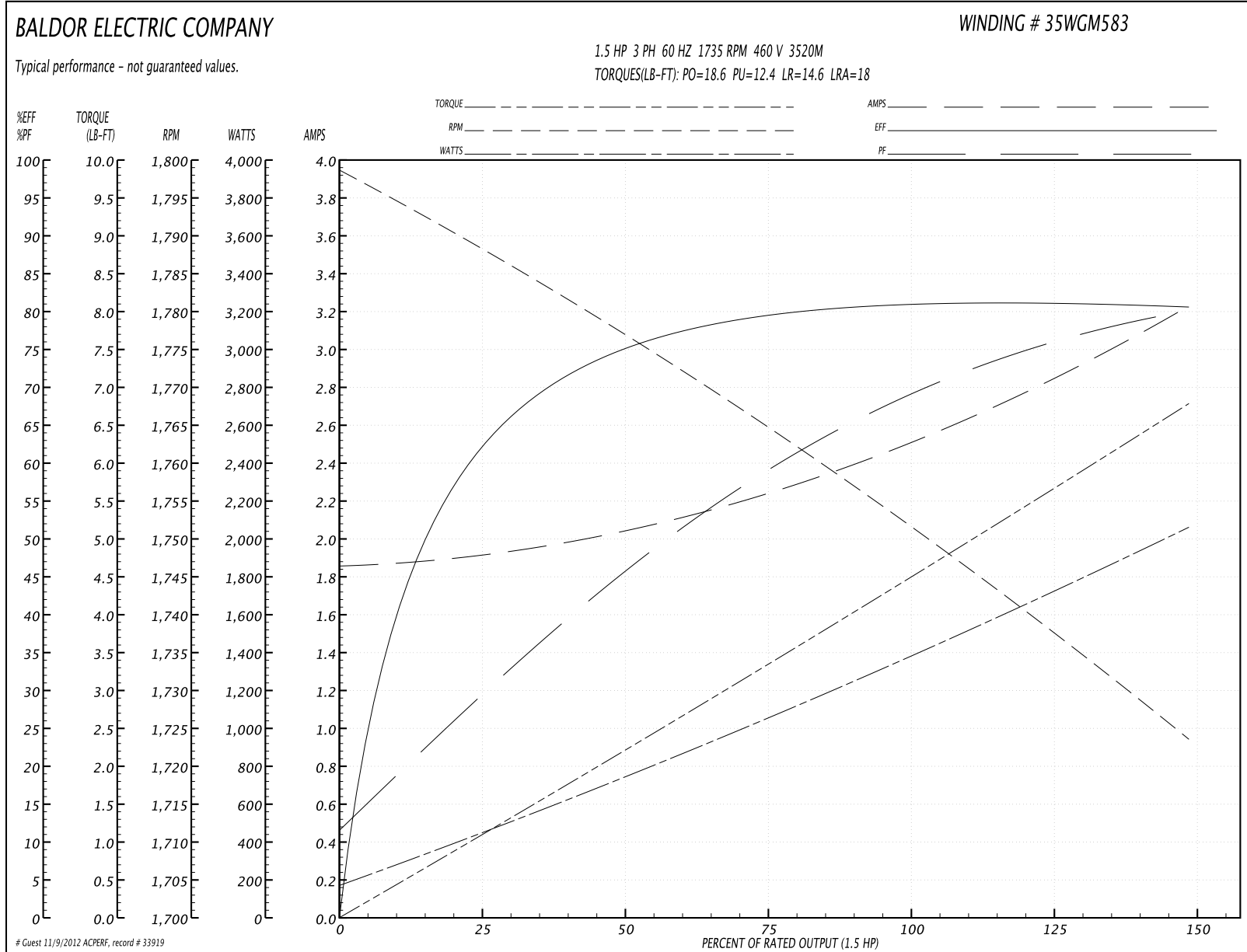
Parts List (continued)		
Part Number	Description	Quantity
SP1003A01	TERM. BOARD, MODE 35 SW X H-23655	1.000 EA
MJ1000A75	GREASE, POLYREX EM EXXON	0.050 LB
MG1000G27	PAINT- S9282E CHARCOAL GREY	0.017 GA
35BA4002A01	RESILIENT BASE, STAMPED	1.000 EA
HA3100A28	THRUBOLT 10-32 X 8.187	4.000 EA
LB1118	LABEL,WARNING (ROLL LABEL)	1.000 EA
LB1125C01	STD (STOCK) CARTON LABEL BALDOR WITH FLA	1.000 EA
LC0007	CONN.DIAGRAM (3PHASE W/THERMAL)	1.000 EA
NP1257L	ALUM UL CSA CC THERMAL REV MTG	1.000 EA
PA1068	PACK GROUP 35 SHORT W OSB BASE	1.000 EA

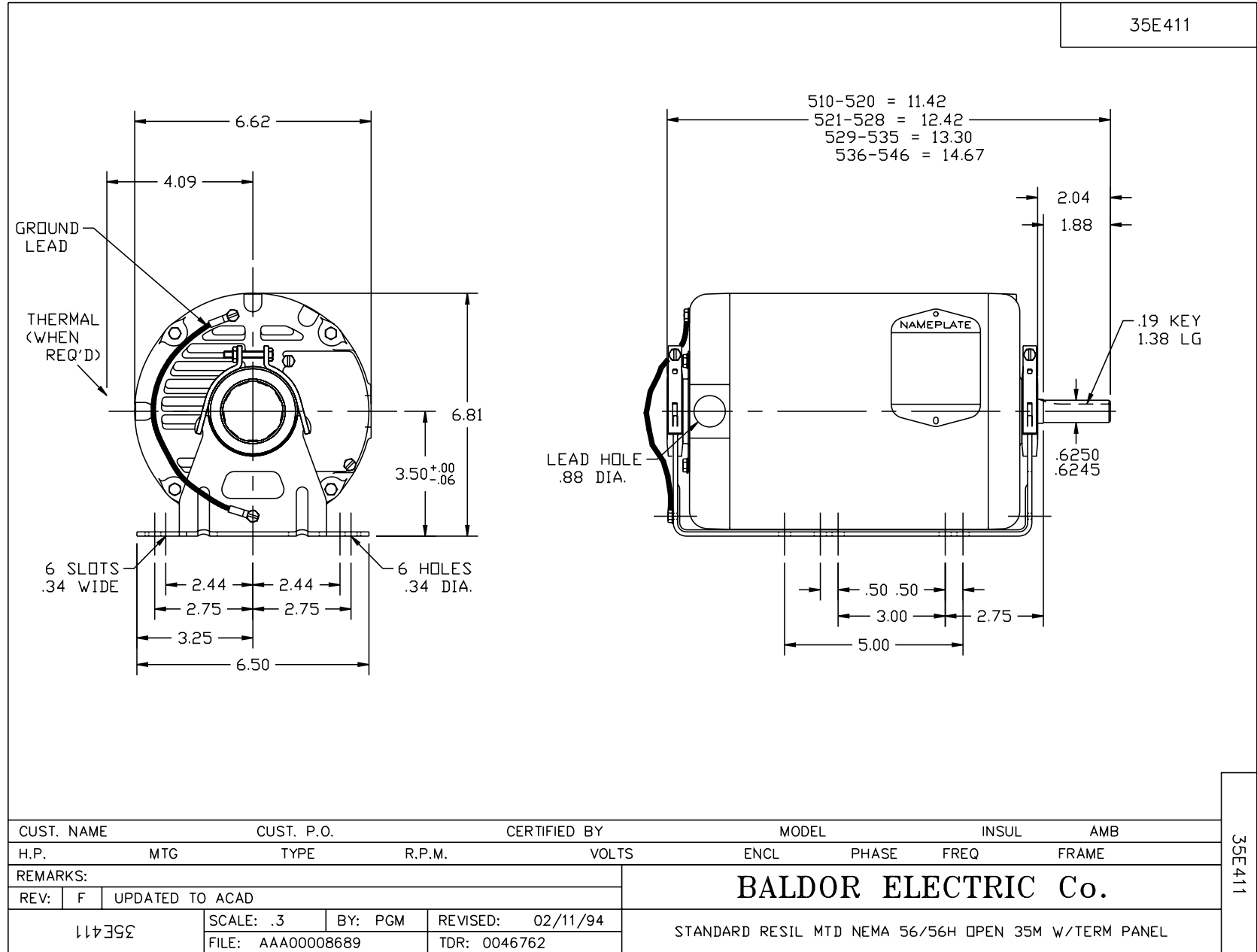
**Performance Data at 460V, 60Hz, 1.5HP (Typical performance - Not guaranteed values)**

General Characteristics			
Full Load Torque:	4.54 LB-FT	Start Configuration:	DOL
No-Load Current:	1.87 Amps	Break-Down Torque:	18.6 LB-FT
Line-line Res. @ 25°C.:	12.861 Ohms A Ph / 0.0 Ohms B Ph	Pull-Up Torque:	12.4 LB-FT
Temp. Rise @ Rated Load:	66 C	Locked-Rotor Torque:	14.6 LB-FT
Temp. Rise @ S.F. Load:	81 C	Starting Current:	18.0 Amps

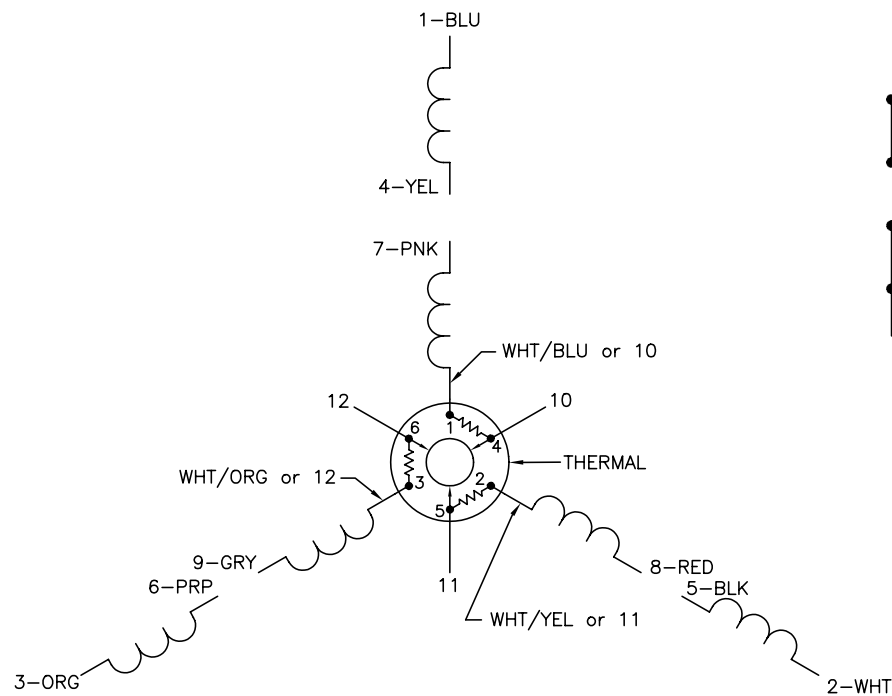
Load Characteristics							
% of Rated Load	25	50	75	100	125	150	S.F.
Power Factor:	30.0	47.0	60.0	69.0	76.0	80.0	73.0
Efficiency:	63.2	75.2	79.6	81.2	81.0	80.6	81.1
Speed:	1787.8	1776.0	1764.0	1751.6	1737.7	1723.2	1743.0
Line Amperes:	1.9	2.04	2.26	2.53	2.86	3.22	2.73

Performance Graph at 460V, 60Hz, 1.5HP Typical performance - Not guaranteed values

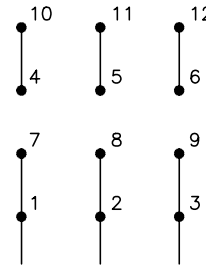




CD0007

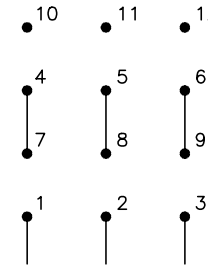


LOW VOLTAGE  
(2Y)



LINE

HIGH VOLTAGE  
(1Y)



LINE

NOTES:

1. INTERCHANGE ANY TWO LINE LEADS TO REVERSE ROTATION.
2. ACTUAL NUMBER OF INTERNAL PARALLEL CIRCUITS MAY VARY.
3. LEAD COLORS ARE OPTIONAL. LEADS MUST ALWAYS BE NUMBERED AS SHOWN.

REV. DESC: ADDED "CK" PLANT CODE			
REV. LTR: E	BY: EAH	REVISED: 05/06/99 17:1	TDR: 0181040
L00000		FILE: AAA00008370	MDL: -
		MTL: -	

**BALDOR ELECTRIC Co.**

3PH, DV, THERMAL, 12 LEADS

CD0007