

BALDOR® • RELIANCE

Product Information Packet

UCC10150

10-15HP,3450RPM,1PH,60HZ,215Z,3740C,OPEN

Copyright © All product information within this document is subject to Baldor Electric Company copyright © protection, unless otherwise noted.

Part Detail							
Revision:	AD	Status:	PRD/A	Change #:		Proprietary:	No
Type:	AC	Prod. Type:	3740C	Elec. Spec:	37WGW977	CD Diagram:	
Enclosure:	OPEN	Mfg Plant:		Mech. Spec:	37E764	Layout:	
Frame:	215Z	Mounting:	F1	Poles:	02	Created Date:	
Base:	RG	Rotation:	R	Insulation:	F	Eff. Date:	11-23-2009
Leads:	2#8 A PH,2#14 B PH 32	Literature:	Y	Elec. Diagram:		Replaced By:	

Nameplate NP1279L							
CAT.NO.	UCC10150						
SPEC.	37E764W977						
HP	10-15 AIR OVER						
VOLTS	230						
AMP	41-57						
RPM	3450						
FRAME	215Z	HZ	60	PH	1		
SER.F.	1.00	CODE	C	DES	-	CL	F
NEMA-NOM-EFF	83	PF	98				
RATING	40C AMB-CONT						
CC	USABLE AT 208V						
DE	6307	ODE	6206				
ENCL	OPEN	SN					

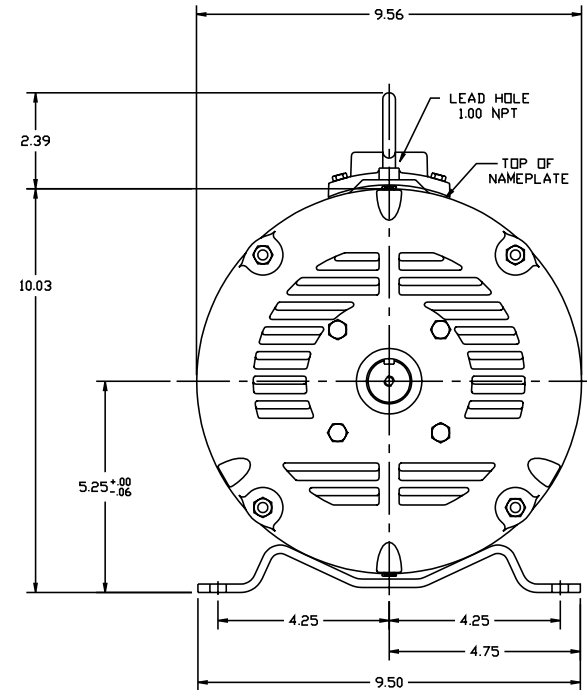
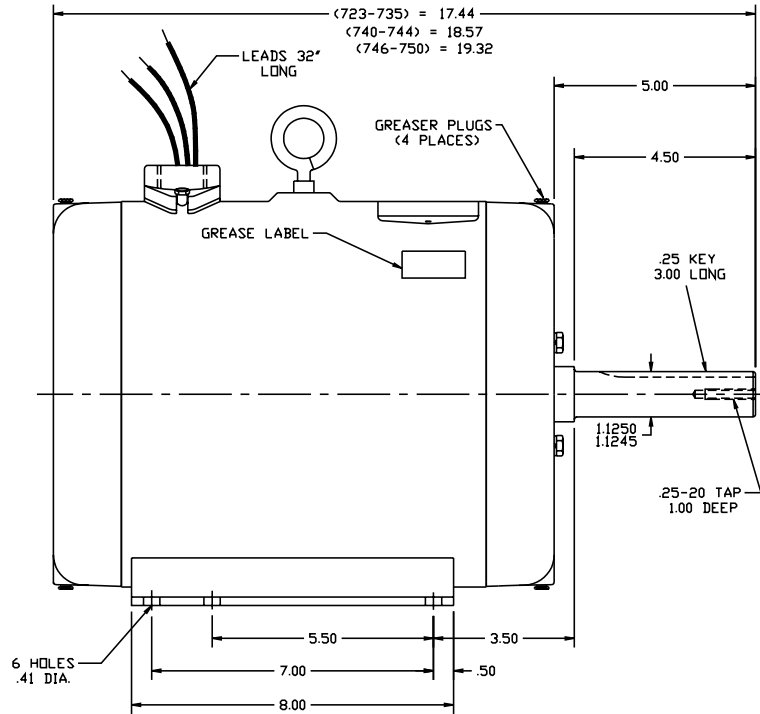
Nameplate NP1263L									
CAT.NO.	UCC10150								
SPEC.	37E764W977								
HP	10-15 AIR OVER								
VOLTS	230								
AMP	41-57								
RPM	3450								
FRAME	215Z	HZ	60	PH	1				
SER.F.	1.00	CODE	C	DES	-	CL	F		
NEMA-NOM-EFF	83	PF	98						
RATING	40C AMB-CONT								
CC			USABLE AT 208V						
DE	6307	ODE	6206						
ENCL	OPEN	SN							

Parts List		
Part Number	Description	Quantity
SA031064	SA 37E764W977	1.000 EA
RA027103	RA 37E764W977	1.000 EA
OC5000A	OIL CAP.ASSY FOR 37E764W977, 3 OIL CAP'S	1.000 EA
HW3200A01	3/8-16X3/4 I-BLT WELDED F/S	1.000 EA
HA6011A01	ADAPTOR, MACH	1.000 EA
36GS5001	GASKET CONDUIT ADAPTOR	1.000 EA
51XF2520A08	SCREW, HEX SER SLT HD, ZN 1/4-20 X .50 L	2.000 EA
11XW1032G06	10-32 X .38, TAPTITE II, HEX WSHR SLTD U	1.000 EA
HW3001B01	003SS CUP WASHER, FOR #8 SCREW	1.000 EA
37EP3200A05	FR ENDPLATE MACH	1.000 EA
HA1104A01	RODENT SCREEN 37 FRAME 206 BRG FRONT END	1.000 EA
51XW1032A06	10-32 X .38, TAPTITE II, HEX WSHR SLTD S	4.000 EA
HW1000A10	#10 FLAT WASHER (SAE)	2.000 EA
HW1000A10	#10 FLAT WASHER (SAE)	4.000 EA
HW4500A19	1/4-28X1/4 SLOTTED PLUG F/S	2.000 EA
HW5100A06	W2420-025 WVY WSHR (WB)	1.000 EA
37EP3201A03	PU ENDPLATE, MACH	1.000 EA
HA1104A05	RODENT SCREEN 37 FRAME 207 BRG PULLEY EN	1.000 EA
51XW1032A06	10-32 X .38, TAPTITE II, HEX WSHR SLTD S	2.000 EA
HW4500A19	1/4-28X1/4 SLOTTED PLUG F/S	2.000 EA
10XN2520A28	1/4-20X 1 3/4 HEX HD	4.000 EA
HW1001A25	LOCKWASHER 1/4, ZINC PLT .493 OD, .255 I	4.000 EA
XY3118A12	5/16-18 HEX NUT DIRECTIONAL SERRATION	4.000 EA
HW2501E26	KEY, 1/4 SQ X 3.000	1.000 EA

Parts List (continued)		
Part Number	Description	Quantity
HA7000A02	KEY RETAINER RING, 1 1/8 DIA, 1 3/8 DIA	1.000 EA
85XU0407S04	4X1/4 U DRIVE PIN STAINLESS	2.000 EA
MJ1000A75	GREASE, POLYREX EM EXXON	0.050 LB
MG1025C02	PAINT, 787.105 LITE TAN EPOXY (USE W/MG1	0.028 GA
LB1115	LABEL,LIFTING DEVICE	1.000 EA
MG1025Z20	ACTIVATOR WILKOFAS 060.32	0.010 GA
LD5000A34	LEAD ASSY, ML1400DF08 W/#10 RING 12"	1.000 EA
HA3104A17	5/16-18X13.250 T-BLT/OHIO	4.000 EA
LB1119	WARNING LABEL	1.000 EA
LB1001	LABEL, GREASE-EXXON POLYREX EM	1.000 EA
LB1125C01	STD (STOCK) CARTON LABEL BALDOR WITH FLA	1.000 EA
LC0127	CONNECTION DIAGRAM	1.000 EA
NP1279L	ALUM FARM DUTY UL CSA CC	1.000 EA
NP1263L	AUX, GP, ALUM, CC, LASER ETCHED	1.000 EA
36PA1001	PACKAGING GROUP	1.000 EA

Accessories		
Part Number	Description	Multiplier
37-1404	C FACE KIT	A8

37E764



UNIVERSAL CROP DRYER MOTOR

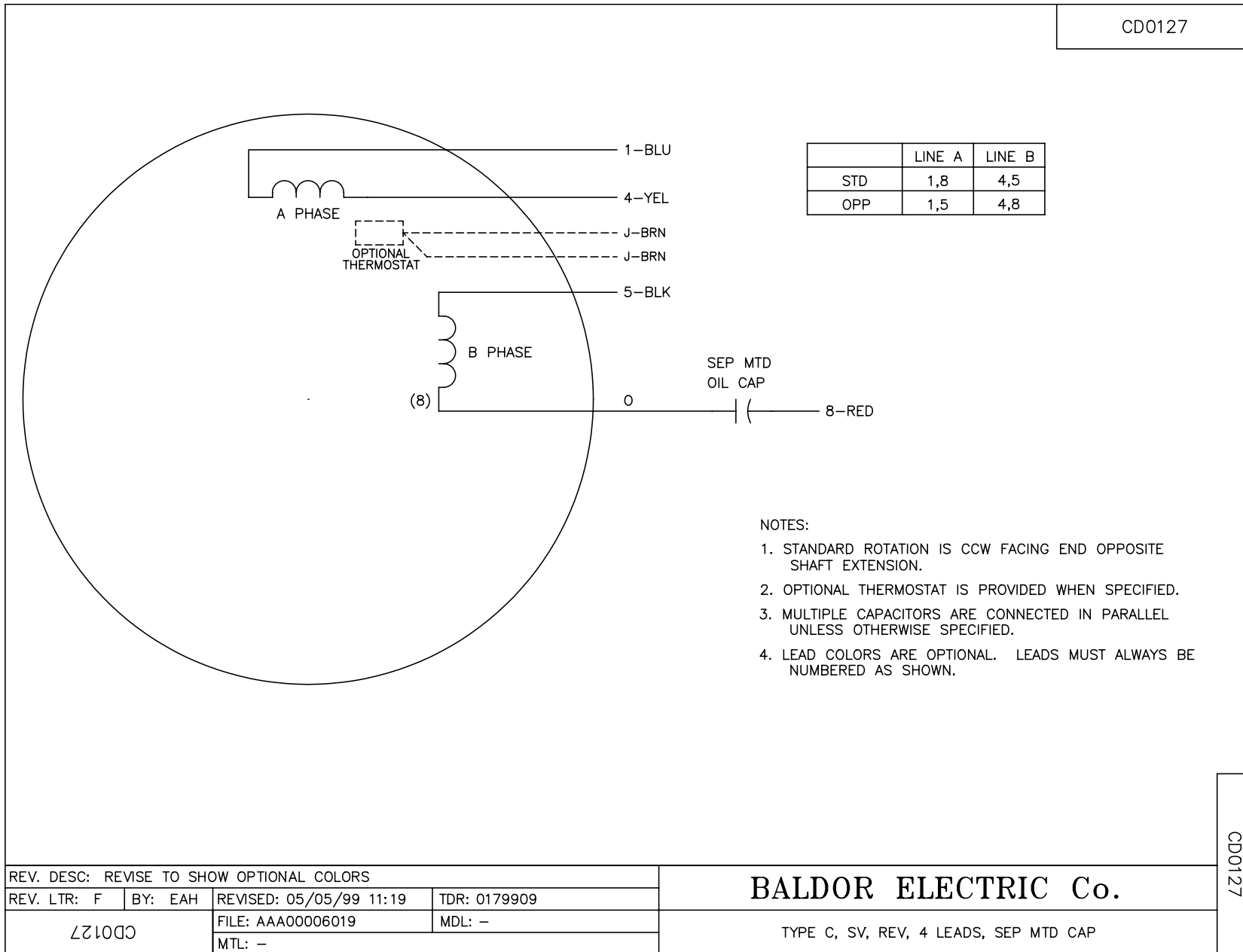
BALDOR ELECTRIC Co.

CUST. NAME	CUST. P.O.			REMARKS:	
MODEL	INSUL	AMB	H.P.	MTG	REV: K 37SB0442 WAS 37SB0251, HA6011A01 WAS HA6021A01.
R.P.M.	VOLTS	ENCL	PHASE	FREQ	SCALE: .4 BY: BLP REVISED: 10/10/94
FRAME	TYPE	CERTIFIED BY		FILE: AAA00010074	TDR: 0063266

SPL HORZ OPEN 37C 213-5Z W/PIPE ADAPTER & T'STATS

37E764

CD0127



REV. DESC: REVISE TO SHOW OPTIONAL COLORS			
REV. LTR: F	BY: EAH	REVISED: 05/05/99 11:19	TDR: 0179909
CD0127		FILE: AAA00006019	MDL: -
		MTL: -	

BALDOR ELECTRIC Co.

TYPE C, SV, REV, 4 LEADS, SEP MTD CAP

CD0127