

BALDOR® • RELIANCE

Product Information Packet

UCL1015

10-15 AIR OVERHP,3450RPM,1PH,60HZ,215Z,3

Copyright © All product information within this document is subject to Baldor Electric Company copyright © protection, unless otherwise noted.

Part Detail							
Revision:	A	Status:	PRD/A	Change #:		Proprietary:	No
Type:	AC	Prod. Type:	3744LC	Elec. Spec:	37WGW198	CD Diagram:	
Enclosure:	OPEN	Mfg Plant:		Mech. Spec:	37M291	Layout:	
Frame:	215Z	Mounting:	F1	Poles:	02	Created Date:	01-07-2010
Base:	RG	Rotation:	R	Insulation:	F	Eff. Date:	02-24-2010
Leads:	2#8 A PH,2#14 B PH 32	Literature:	Y	Elec. Diagram:		Replaced By:	

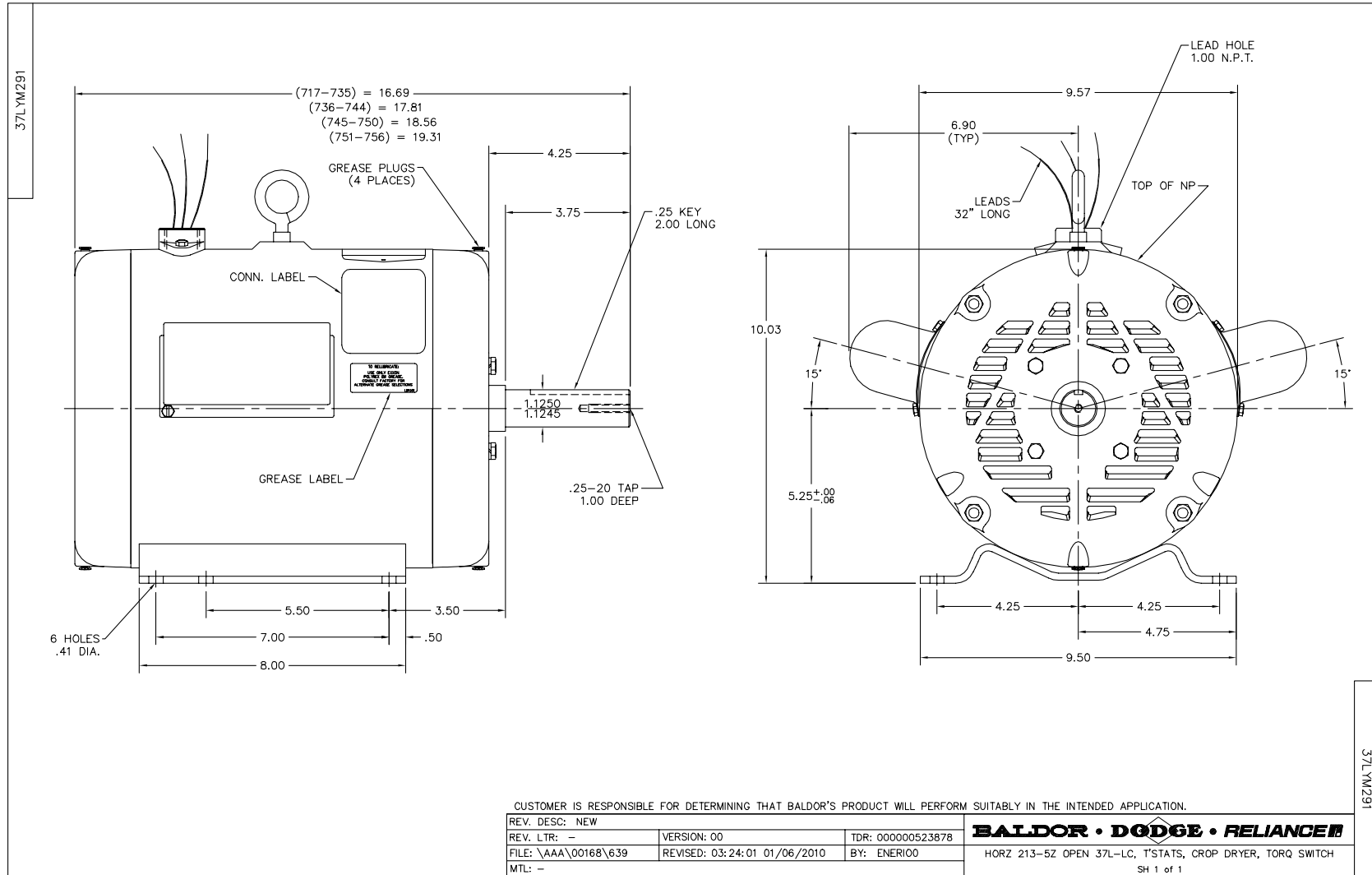
Nameplate NP1279L							
CAT.NO.	UCL1015						
SPEC.	37M291W198						
HP	10-15 AIR OVER						
VOLTS	230						
AMP	44-55						
RPM	3450						
FRAME	215Z	HZ	60	PH	1		
SER.F.	1.00	CODE	G	DES	L	CL	F
NEMA-NOM-EFF	84	PF	89				
RATING	40C AMB-CONT						
CC	USABLE AT 208V						
DE	6307	ODE	6206				
ENCL	OPEN	SN					

Nameplate NP1263L									
CAT.NO.	UCL1015								
SPEC.	37M291W198								
HP	10-15 AIR OVER								
VOLTS	230								
AMP	44-55								
RPM	3450								
FRAME	215Z	HZ	60	PH	1				
SER.F.	1.00	CODE	G	DES	L	CL	F		
NEMA-NOM-EFF	84	PF	89						
RATING	40C AMB-CONT								
CC	USABLE AT 208V								
DE	6307	ODE	6206						
ENCL	OPEN	SN							

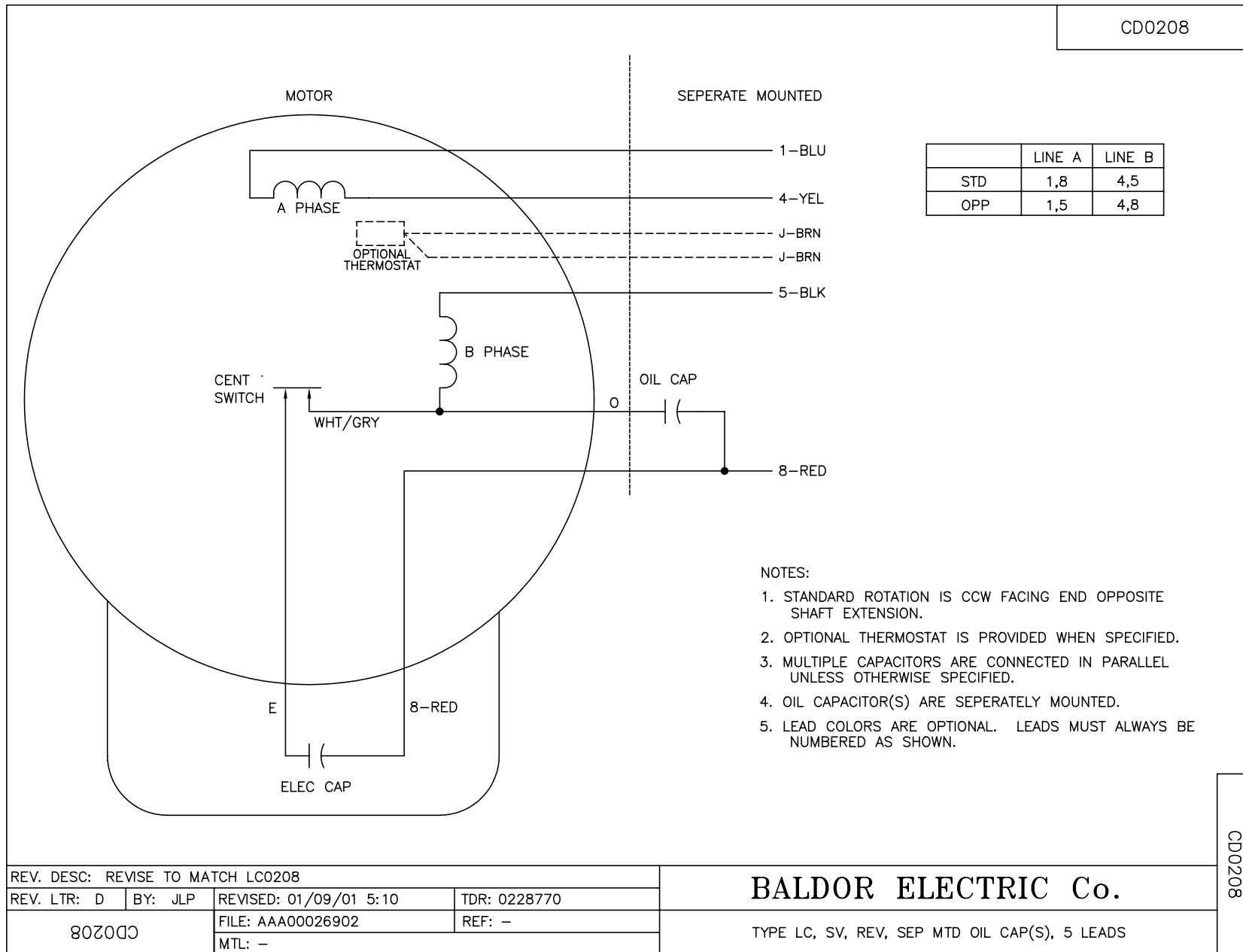
Parts List		
Part Number	Description	Quantity
SA189556	SA 37M291W198	1.000 EA
RA177266	RA 37M291W198	1.000 EA
OC3040F09SP	CYL OIL CAP 40MFD/370V	1.000 EA
EC4270C06	ELEC CAP, 270-324 MFD, 250V, 2.06D X 4.	2.000 EA
HW3200A01	3/8-16X3/4 I-BLT WELDED F/S	1.000 EA
HA6011A01	ADAPTOR, MACH	1.000 EA
51XF2520A08	SCREW, HEX SER SLT HD, ZN 1/4-20 X .50 L	2.000 EA
11XW1032G06	10-32 X .38, TAPTITE II, HEX WSHR SLTD U	1.000 EA
HW3001B01	003SS CUP WASHER, FOR #8 SCREW	1.000 EA
37EP3200A05	FR ENDPLATE MACH	1.000 EA
HW4500A19	1/4-28X1/4 SLOTTED PLUG F/S	2.000 EA
HA1104A01	RODENT SCREEN 37 FRAME 206 BRG FRONT END	1.000 EA
51XW1032A06	10-32 X .38, TAPTITE II, HEX WSHR SLTD S	4.000 EA
HW1000A10	#10 FLAT WASHER (SAE)	4.000 EA
SP1008A01	BAFFLE, MODEL 36 & 37	1.000 EA
13XT0832A07	8-32X7/16 TYP 23 PAN HD SLT DX	2.000 EA
NS2501A01	INSULATOR, CAPACITOR	2.000 EA
35CB4802A02SP	CAPACITOR COVER, STAMPED X W/AUTOPHORET	2.000 EA
51XB1016A05	10-16X5/16HX WA SL SR TYB (F/S)	4.000 EA
HW5100A06	W2420-025 WVY WSHR (WB)	1.000 EA
37EP3201A03	PU ENDPLATE, MACH	1.000 EA
HW4500A19	1/4-28X1/4 SLOTTED PLUG F/S	2.000 EA
HA1104A05	RODENT SCREEN 37 FRAME 207 BRG PULLEY EN	1.000 EA
51XW1032A06	10-32 X .38, TAPTITE II, HEX WSHR SLTD S	2.000 EA

Parts List (continued)		
Part Number	Description	Quantity
HW1025A10	#10 BALANCE WASHER (SPL)	2.000 EA
10XN2520A28	1/4-20X 1 3/4 HEX HD	4.000 EA
HW1001A25	LOCKWASHER 1/4, ZINC PLT .493 OD, .255 I	4.000 EA
XY3118A12	5/16-18 HEX NUT DIRECTIONAL SERRATION	4.000 EA
HA7000A02	KEY RETAINER RING, 1 1/8 DIA, 1 3/8 DIA	1.000 EA
LB1001	LABEL, GREASE-EXXON POLYREX EM	1.000 EA
LB1115	LABEL,LIFTING DEVICE	1.000 EA
85XU0407S04	4X1/4 U DRIVE PIN STAINLESS	2.000 EA
MJ1000A75	GREASE, POLYREX EM EXXON	0.050 LB
HW2501E18	KEY, 1/4 SQ X 2.000	1.000 EA
MG1025C02	PAINT, 787.105 LITE TAN EPOXY (USE W/MG1	0.028 GA
MG1025Z20	ACTIVATOR WILKOFAS 060.32	0.010 GA
WD1000A15	3-520132-2 AMP FLAG (4M/RL NON-CANC/NON-	6.000 EA
LD5000A34	LEAD ASSY, ML1400DF08 W/#10 RING 12"	1.000 EA
HA3104A17	5/16-18X13.250 T-BLT/OHIO	4.000 EA
SP5172A10	TORQ MODEL 37 TYPE LC SPLIT CAPS,	1.000 EA
LB1119	WARNING LABEL	1.000 EA
LB1125C01	STD (STOCK) CARTON LABEL BALDOR WITH FLA	1.000 EA
LC0208	CONNECTION LABEL X	1.000 EA
NP1279L	ALUM FARM DUTY UL CSA CC	1.000 EA
NP1263L	AUX, GP, ALUM, CC, LASER ETCHED	1.000 EA
G0PA1000	PACKAGING GROUP	1.000 EA

Accessories		
Part Number	Description	Multiplier
37-1404	C FACE KIT	A8



CD0208



REV. DESC: REVISE TO MATCH LC0208			
REV. LTR: D	BY: JLP	REVISED: 01/09/01 5:10	TDR: 0228770
80200		FILE: AAA00026902	REF: -
CD0208		MTL: -	

BALDOR ELECTRIC Co.

TYPE LC, SV, REV, SEP MTD OIL CAP(S), 5 LEADS

CD0208