

# **BALDOR® • RELIANCE**

## **Product Information Packet**

# **UCLE7510**

**7.5-10 AIR OVERHP, 3450RPM, 1PH, 60HZ, 182TZ**

Copyright © All product information within this document is subject to Baldor Electric Company copyright © protection, unless otherwise noted.

Part Detail							
Revision:	D	Status:	PRD/A	Change #:		Proprietary:	No
Type:	AC	Prod. Type:	3646LC	Elec. Spec:	36WGX955	CD Diagram:	
Enclosure:	TEAO	Mfg Plant:		Mech. Spec:	36H990	Layout:	
Frame:	182TZ	Mounting:	F1	Poles:	02	Created Date:	03-03-2010
Base:	RG	Rotation:	R	Insulation:	F	Eff. Date:	09-21-2012
Leads:	2#10 A PH 30" long,3#16	Endure:	Y	Elec. Diagram:		Replaced By:	

Nameplate NP1279L							
CAT.NO.	UCLE7510						
SPEC.	36H990X955G2						
HP	7.5-10 AIR OVER						
VOLTS	230						
AMP	38						
RPM	3450						
FRAME	182TZ	HZ	60	PH	1		
SER.F.	1.00	CODE	F	DES	-	CL	F
NEMA-NOM-EFF	85.5	PF	95				
RATING	40C AMB-CONT						
CC				USABLE AT 208V	28		
DE	6206	ODE	6205				
ENCL	TEAO	SN					

Nameplate NP1263L									
CAT.NO.	UCLE7510								
SPEC.	36H990X955G2								
HP	7.5-10 AIR OVER								
VOLTS	230								
AMP	38								
RPM	3450								
FRAME	182TZ	HZ	60	PH	1				
SER.F.	1.00	CODE	F	DES	-	CL	F		
NEMA-NOM-EFF	85.5	PF	95						
RATING	40C AMB-CONT								
CC	USABLE AT 208V		28						
DE	6206	ODE	6205						
ENCL	TEAO	SN							

Parts List		
Part Number	Description	Quantity
SA191654	SA 36H990X955G2	1.000 EA
RA179313	RA 36H990X955G2	1.000 EA
OC3050F09SP	CYL OIL CAP 50MFD/370V	2.000 EA
OC3040F09SP	CYL OIL CAP 40MFD/370V	1.000 EA
EC1216C06SP	ELEC CAP, 216-259 MFD, 250V, 2.06D X 4.	1.000 EA
HA6021A01SP	ADAPTOR, MACH	1.000 EA
51XB1016A07	10-16 X 7/16 HXWSSLD SERTYB	2.000 EA
36GS5000	GASKET CONDUIT ADAPTOR	1.000 EA
11XW1032G06	10-32 X .38, TAPTITE II, HEX WSHR SLTD U	1.000 EA
HW3001B01	003SS CUP WASHER, FOR #8 SCREW	1.000 EA
36EP3101A86	FR ENDPLATE, 2 GRSRS, GRD @2	1.000 EA
HW4500A19	1/4-28X1/4 SLOTTED PLUG F/S	2.000 EA
13XF0832A08	8-32 X.50 PAN HD,SLTD, TYPE F SCREW, ZIN	2.000 EA
NS2501A01	INSULATOR, CAPACITOR	1.000 EA
51XB1016A05	10-16X5/16HX WA SL SR TYB (F/S)	2.000 EA
HW5100A05	WVY WSHR F/205 & 304 BRGS	1.000 EA
36EP3100A06	PU ENDPLATE, MACH	1.000 EA
HW4500A19	1/4-28X1/4 SLOTTED PLUG F/S	2.000 EA
10XN2520A20	1/4-20X 1 1/4 HEX HD X	2.000 EA
HW1001A25	LOCKWASHER 1/4, ZINC PLT .493 OD, .255 I	2.000 EA
XY2520A12	1/4-20 HEX NUT, DIRECTIONAL SERRATIONS	4.000 EA
HW2501E18	KEY, 1/4 SQ X 2.000	1.000 EA
HA7000A02	KEY RETAINER RING, 1 1/8 DIA, 1 3/8 DIA	1.000 EA
85XU0407S04	4X1/4 U DRIVE PIN STAINLESS	2.000 EA

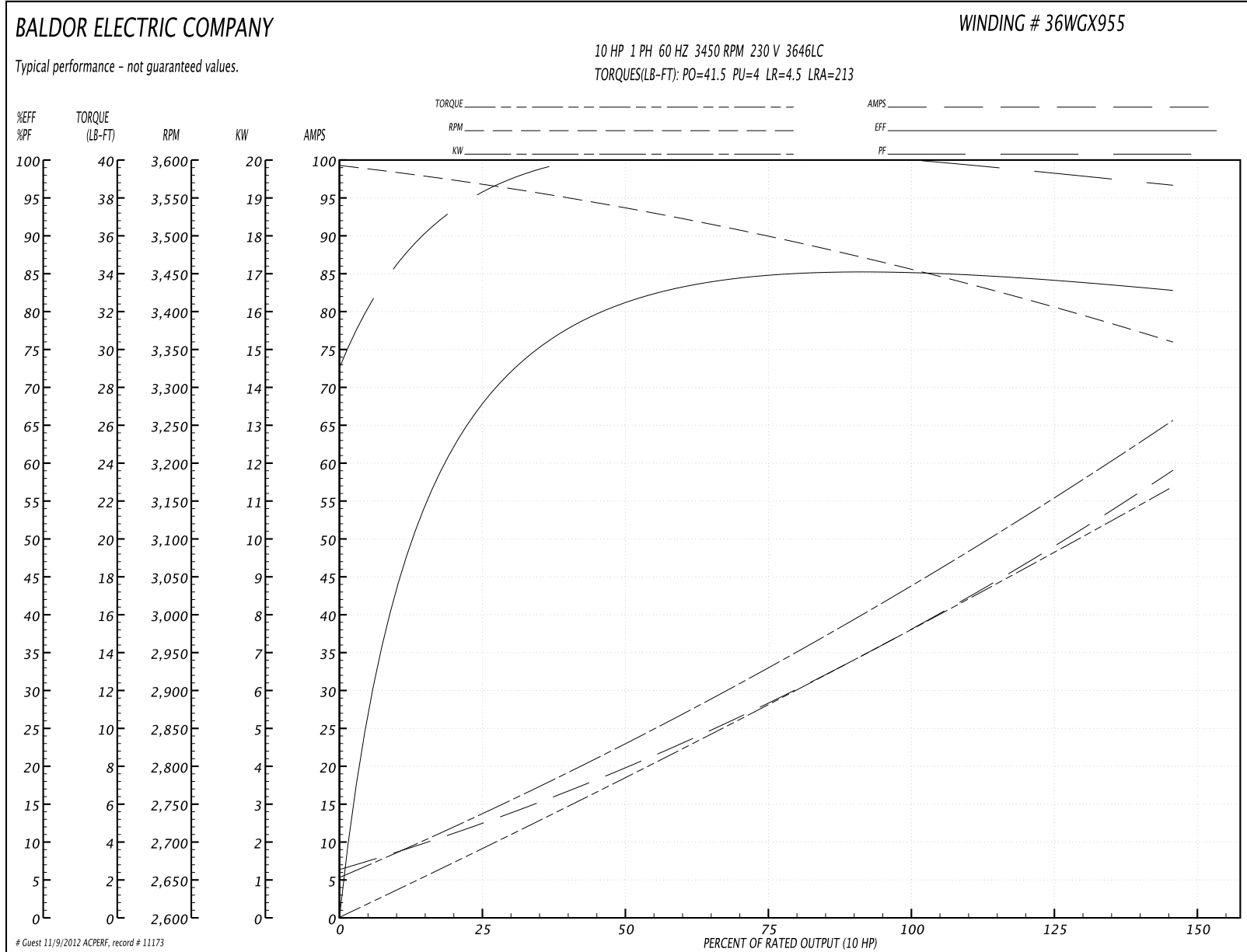
Parts List (continued)		
Part Number	Description	Quantity
LB1001	LABEL, GREASE-EXXON POLYREX EM	1.000 EA
HW3200A01	3/8-16X3/4 I-BLT WELDED F/S	1.000 EA
MJ1000A75	GREASE, POLYREX EM EXXON	0.050 LB
LB1115	LABEL,LIFTING DEVICE	1.000 EA
MG1025Z20	ACTIVATOR WILKOFASST 060.32	0.010 GA
WD1000A15	3-520132-2 AMP FLAG (4M/RL NON-CANC/NON-	8.000 EA
35CB4802A02SP	CAPACITOR COVER, STAMPED X W/AUTOPHORET	1.000 EA
35GS3001A02	GASKET, CA.COVER, 5.38 LONG .06 CS301	1.000 EA
SP5172A11	37 TYPE L TORQ STAT SWITCH LEAD ASSEMBLY	1.000 EA
HA3101A28	THRUBOLT 1/4-20 X 12.500 OHIO ROD	4.000 EA
MG1025C02	PAINT, 787.105 LITE TAN EPOXY (USE W/MG1	0.022 GA
LB1119	WARNING LABEL	1.000 EA
LB1125C01	STD (STOCK) CARTON LABEL BALDOR WITH FLA	1.000 EA
LC0208	CONNECTION LABEL X	1.000 EA
LB1161	LABEL,THERMOSTAT (ROLL LABEL)	1.000 EA
NP1279L	ALUM FARM DUTY UL CSA CC	1.000 EA
NP1263L	AUX, GP, ALUM, CC, LASER ETCHED	1.000 EA
LD5000A24	LEAD ASSY, ML1400DF10 W/#10 RING 12"	1.000 EA
36PA1001	PACKAGING GROUP	1.000 EA

Accessories		
Part Number	Description	Multiplier
36-3301	C FACE KIT	A8
36EP1304A62SP	FLANGE MTD ENDPLATE 182-4TD -ENCL (LESS	A8

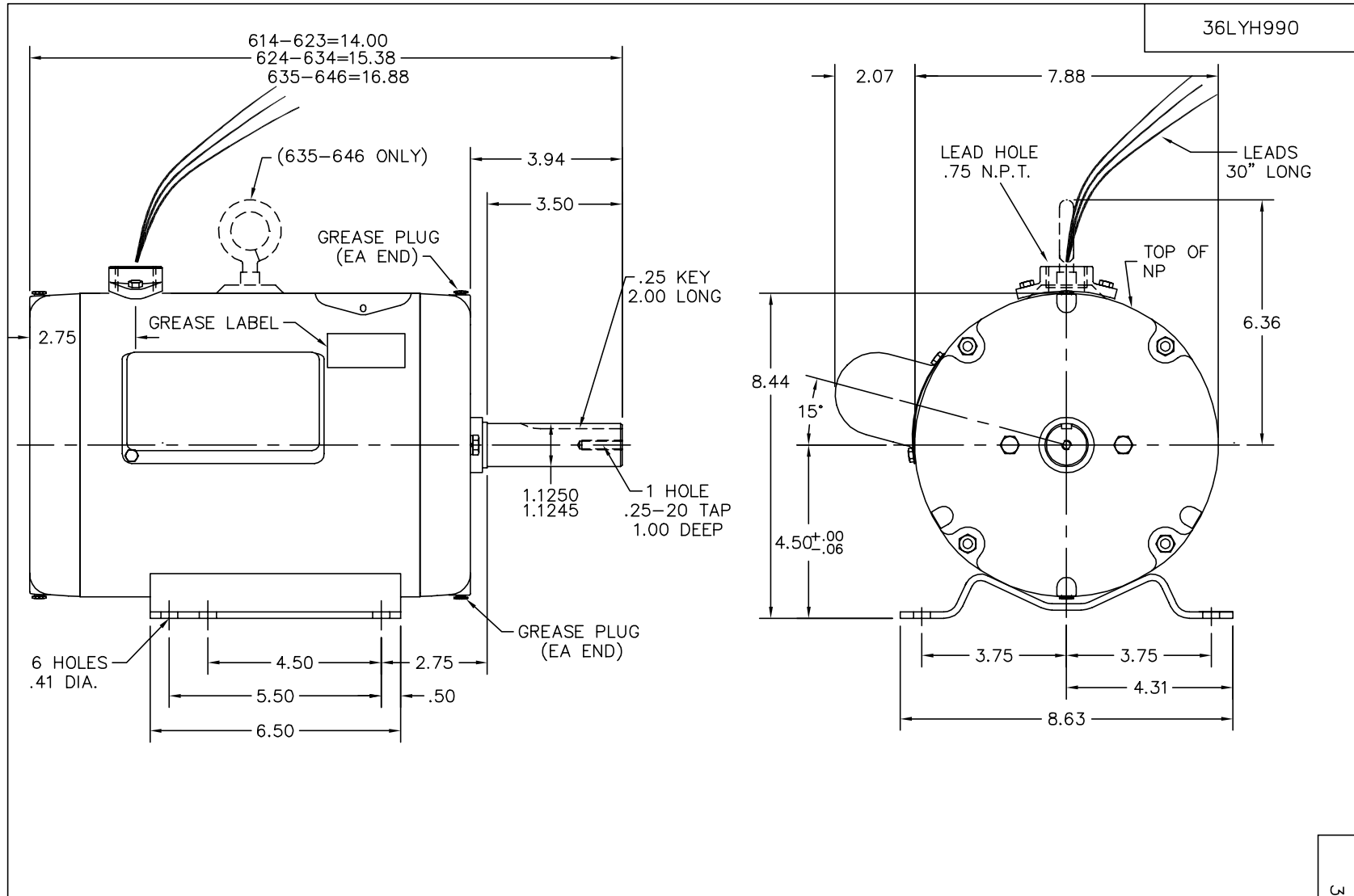
**Performance Data at 230V, 60Hz, 10.0HP (Typical performance - Not guaranteed values)**

General Characteristics							
Full Load Torque:	15.2 LB-FT			Start Configuration:	DOL		
No-Load Current:	6.2 Amps			Break-Down Torque:	41.5 LB-FT		
Line-line Res. @ 25°C.:	0.202 Ohms A Ph / 0.319 Ohms B Ph			Pull-Up Torque:	4.0 LB-FT		
Temp. Rise @ Rated Load:				Locked-Rotor Torque:	4.5 LB-FT		
Temp. Rise @ S.F. Load:				Starting Current:	213.0 Amps		
Load Characteristics							
% of Rated Load	25	50	75	100	125	150	S.F.
Power Factor:	95.0	99.0	99.0	99.0	99.0	99.0	0.0
Efficiency:	67.3	80.6	84.8	85.7	84.7	82.4	0.0
Speed:	3565.0	3533.0	3498.0	3458.0	3412.0	3357.0	0.0
Line Amperes:	12.8	20.4	28.8	37.9	47.9	59.4	0.0

Performance Graph at 230V, 60Hz, 10.0HP Typical performance - Not guaranteed values







CUSTOMER IS RESPONSIBLE FOR DETERMINING THAT MOTOR PERFORMANCE IS SUITABLE IN THE APPLICATION.

REV. DESC: ADD DIM. FROM FREP TO CENTER OF LEAD HOLE

REV. LTR: B

VERSION: 01

TDR: 000000443387

**BALDOR • DODGE • RELIANCE**

066HΛ79C

FILE: \AAA\00053\432

REVISED: 10:23:30 09/13/2007

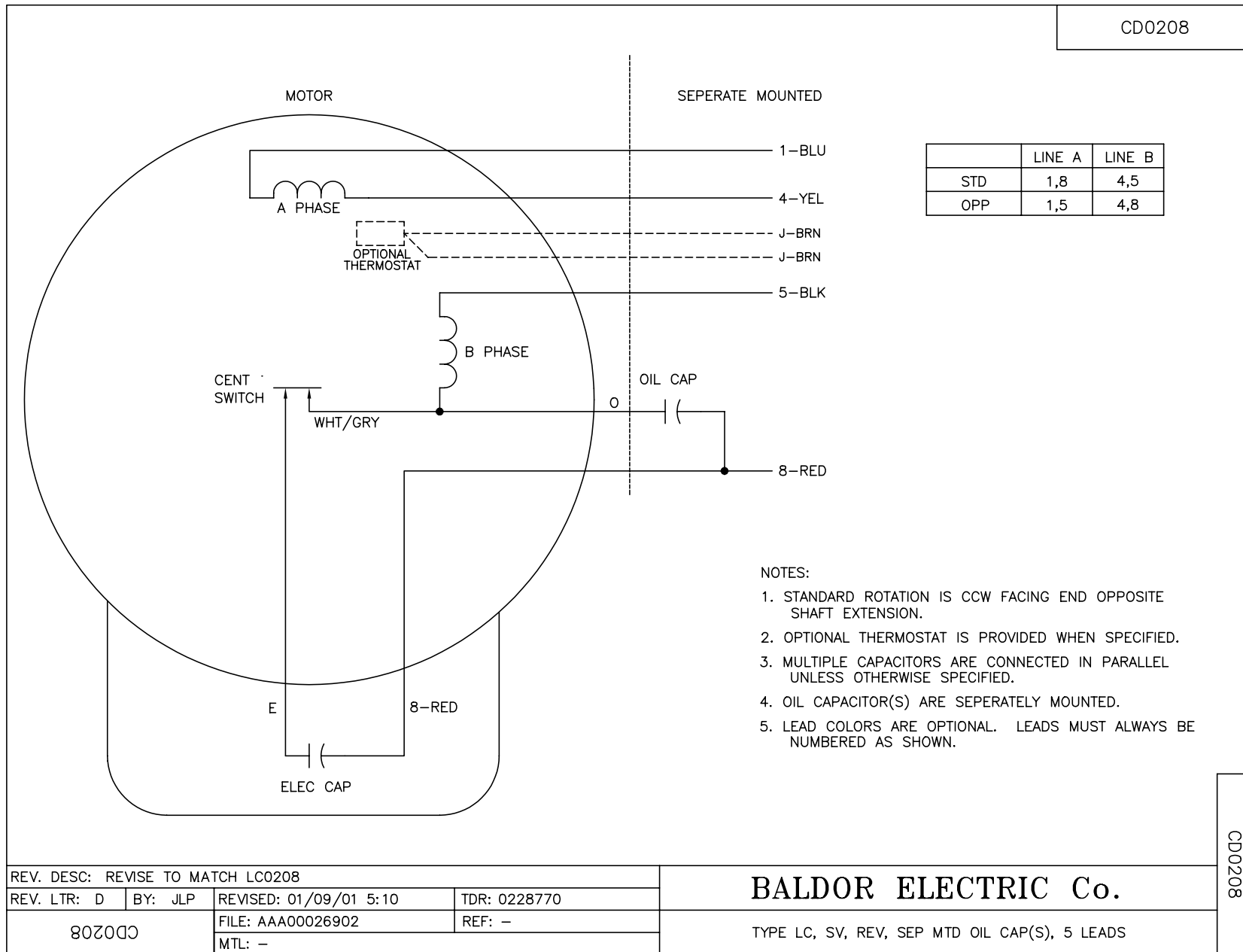
MTL: -

BY: ENMATRO

HOR 182-4TZ TENV 36L-LC CROP DRYER W/T'STATS, CAP.CAN @ 10

36LYH990

CD0208



REV. DESC: REVISE TO MATCH LC0208			
REV. LTR: D	BY: JLP	REVISED: 01/09/01 5:10	TDR: 0228770
80200		FILE: AAA00026902	REF: -
		MTL: -	

**BALDOR ELECTRIC Co.**

TYPE LC, SV, REV, SEP MTD OIL CAP(S), 5 LEADS

CD0208