

BALDOR® • **RELIANCE**

Product Information Packet

UCME1014

10-14HP,3450RPM,3PH,60HZ,215Z,3733M,TEAO

Copyright © All product information within this document is subject to Baldor Electric Company copyright © protection, unless otherwise noted.

| Part Detail | | | | | | | |
|-------------|------------|-------------|-------|----------------|----------|---------------|------------|
| Revision: | V | Status: | PRD/A | Change #: | | Proprietary: | No |
| Type: | AC | Prod. Type: | 3733M | Elec. Spec: | 37WGY842 | CD Diagram: | |
| Enclosure: | TEAO | Mfg Plant: | | Mech. Spec: | 37G743 | Layout: | |
| Frame: | 215Z | Mounting: | F1 | Poles: | 02 | Created Date: | |
| Base: | RG | Rotation: | R | Insulation: | F | Eff. Date: | 09-20-2012 |
| Leads: | 9#14 32"LG | Literature: | Y | Elec. Diagram: | | Replaced By: | |

| Nameplate NP1279L | | | | | | | |
|-------------------|----------------|----------------|------|-----|---|----|---|
| CAT.NO. | UCME1014 | | | | | | |
| SPEC. | 37G743Y842G1 | | | | | | |
| HP | 10-14 AIR OVER | | | | | | |
| VOLTS | 208-230/460 | | | | | | |
| AMP | 35-33/16.5 | | | | | | |
| RPM | 3450 | | | | | | |
| FRAME | 215Z | HZ | 60 | PH | 3 | | |
| SER.F. | 1.00 | CODE | H | DES | B | CL | F |
| NEMA-NOM-EFF | | PF | | | | | |
| RATING | 40C AMB-CONT | | | | | | |
| CC | | USABLE AT 208V | 35 | | | | |
| DE | 6307 | ODE | 6206 | | | | |
| ENCL | TEAO | SN | | | | | |
| | | | | | | | |

| Nameplate NP1263L | | | | | | | | | |
|-------------------|----------------|----------------|------|-----|---|----|---|--|--|
| CAT.NO. | UCME1014 | | | | | | | | |
| SPEC. | 37G743Y842G1 | | | | | | | | |
| HP | 10-14 AIR OVER | | | | | | | | |
| VOLTS | 208-230/460 | | | | | | | | |
| AMP | 35-33/16.5 | | | | | | | | |
| RPM | 3450 | | | | | | | | |
| FRAME | 215Z | HZ | 60 | PH | 3 | | | | |
| SER.F. | 1.00 | CODE | H | DES | B | CL | F | | |
| NEMA-NOM-EFF | | PF | | | | | | | |
| RATING | 40C AMB-CONT | | | | | | | | |
| CC | | USABLE AT 208V | 35 | | | | | | |
| DE | 6307 | ODE | 6206 | | | | | | |
| ENCL | TEAO | SN | | | | | | | |

| Parts List | | |
|-------------|--|----------|
| Part Number | Description | Quantity |
| SA032767 | SA 37G743Y842G1 | 1.000 EA |
| RA028801 | RA 37G743Y842G1 | 1.000 EA |
| HA6011A01 | ADAPTOR, MACH | 1.000 EA |
| 36GS5001 | GASKET CONDUIT ADAPTOR | 1.000 EA |
| 51XF2520A08 | SCREW, HEX SER SLT HD, ZN 1/4-20 X .50 L | 2.000 EA |
| 51XT0832G06 | 8-32 X 7/16 TY23 HXWS SLDSR GR | 1.000 EA |
| HW3001B01 | 003SS CUP WASHER, FOR #8 SCREW | 1.000 EA |
| 37EP3101A27 | FR ENDPLATE, MACH | 1.000 EA |
| HW4500A19 | 1/4-28X1/4 SLOTTED PLUG F/S | 2.000 EA |
| HW5100A06 | W2420-025 WVY WSHR (WB) | 1.000 EA |
| 37EP3100A07 | PU ENDPLATE, MACH., LOCKED BEARING | 1.000 EA |
| HW4500A19 | 1/4-28X1/4 SLOTTED PLUG F/S | 2.000 EA |
| 10XN2520A28 | 1/4-20X 1 3/4 HEX HD | 4.000 EA |
| HW1001A25 | LOCKWASHER 1/4, ZINC PLT .493 OD, .255 I | 4.000 EA |
| XY3118A12 | 5/16-18 HEX NUT DIRECTIONAL SERRATION | 4.000 EA |
| HW2501E18 | KEY, 1/4 SQ X 2.000 | 1.000 EA |
| HA7000A02 | KEY RETAINER RING, 1 1/8 DIA, 1 3/8 DIA | 1.000 EA |
| 85XU0407S04 | 4X1/4 U DRIVE PIN STAINLESS | 2.000 EA |
| LB1115 | LABEL,LIFTING DEVICE | 1.000 EA |
| HW3200A01 | 3/8-16X3/4 I-BLT WELDED F/S | 1.000 EA |
| MJ1000A75 | GREASE, POLYREX EM EXXON | 0.050 LB |
| LB1001 | LABEL, GREASE-EXXON POLYREX EM | 1.000 EA |
| HW3200A01 | 3/8-16X3/4 I-BLT WELDED F/S | 1.000 EA |
| MG1025Z20 | ACTIVATOR WILKOFAS 060.32 | 0.010 GA |

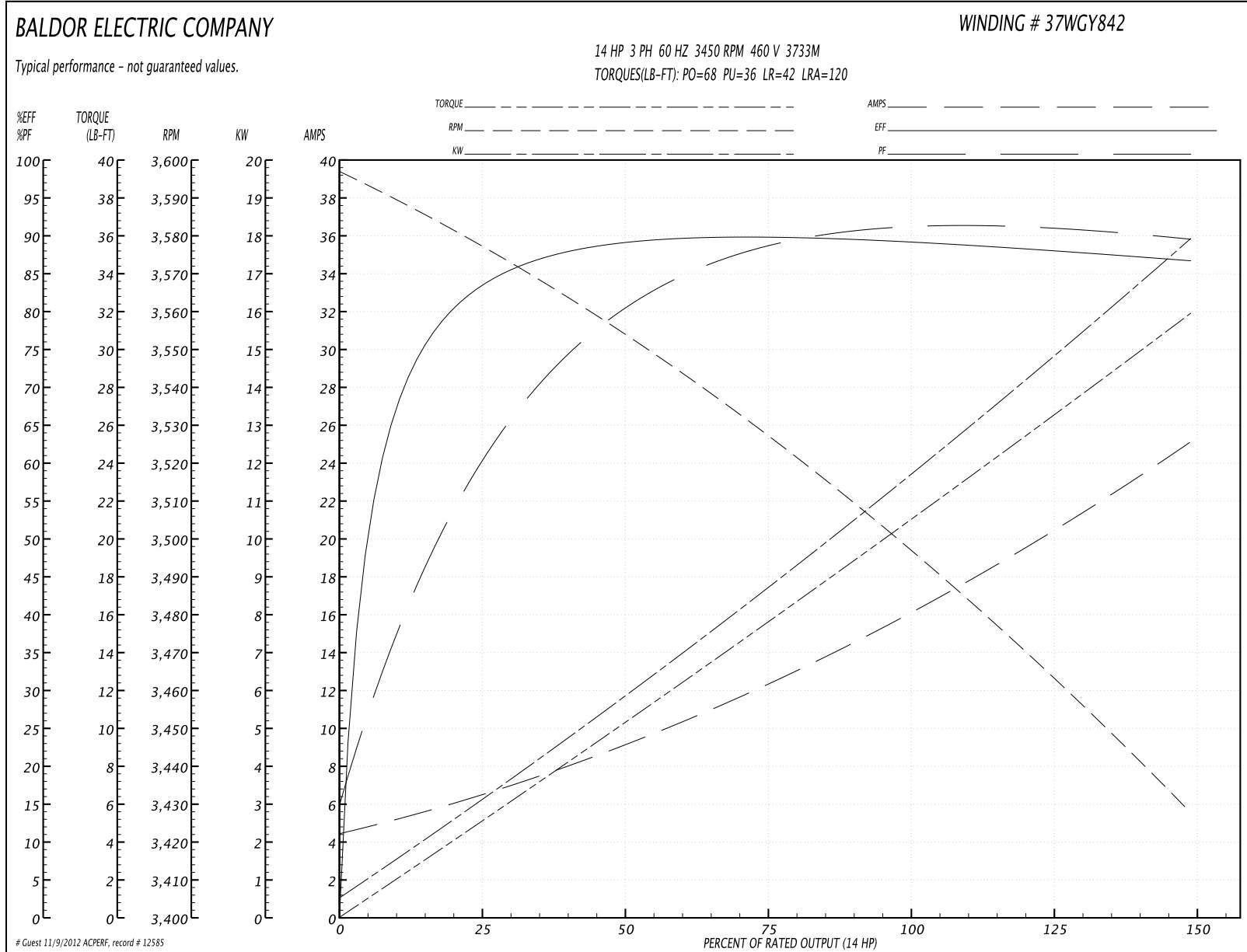
| Parts List (continued) | | |
|------------------------|--|----------|
| Part Number | Description | Quantity |
| HA3104A14 | THRUBOLT- 5/16-18 X12.125(OHIO) | 4.000 EA |
| LD5000A24 | LEAD ASSY, ML1400DF10 W/#10 RING 12" | 1.000 EA |
| MG1025C02 | PAINT, 787.105 LITE TAN EPOXY (USE W/MG1 | 0.028 GA |
| LB1119 | WARNING LABEL | 1.000 EA |
| LB1125C01 | STD (STOCK) CARTON LABEL BALDOR WITH FLA | 1.000 EA |
| LC0145B01 | CONNECTION LABEL | 1.000 EA |
| NP1279L | ALUM FARM DUTY UL CSA CC | 1.000 EA |
| NP1263L | AUX, GP, ALUM, CC, LASER ETCHED | 1.000 EA |
| 36PA1001 | PACKAGING GROUP | 1.000 EA |

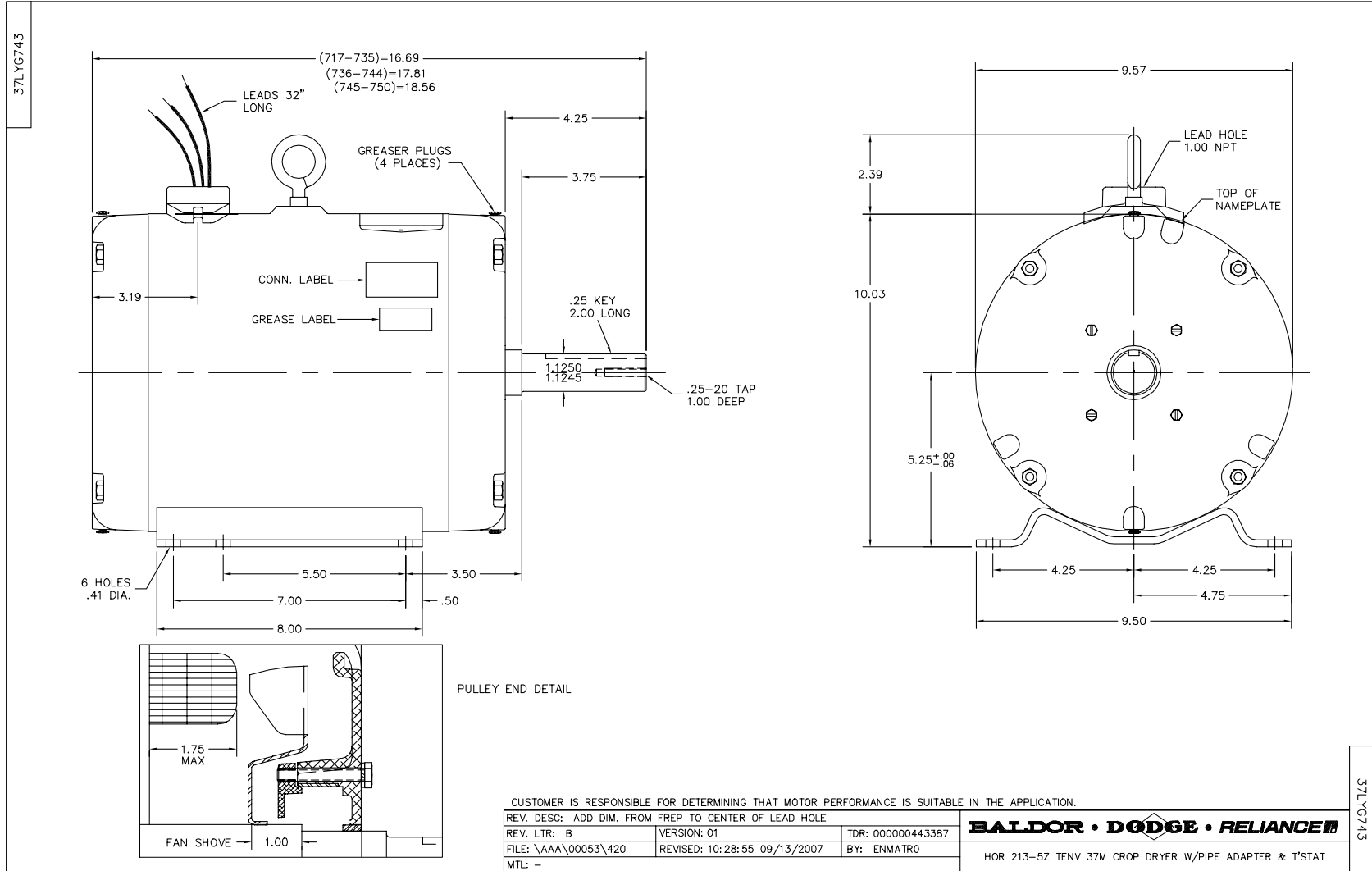
| Accessories | | |
|-------------|-------------|------------|
| Part Number | Description | Multiplier |
| 37-3301 | C FACE KIT | P1 |

Performance Data at 460V, 60Hz, 14.0HP (Typical performance - Not guaranteed values)

| General Characteristics | | | | | | | |
|--------------------------|---------------------------------|--------|--------|----------------------|------------|--------|------|
| Full Load Torque: | 21.3 LB-FT | | | Start Configuration: | DOL | | |
| No-Load Current: | 4.7 Amps | | | Break-Down Torque: | 68.0 LB-FT | | |
| Line-line Res. @ 25°C.: | 0.818 Ohms A Ph / 0.0 Ohms B Ph | | | Pull-Up Torque: | 36.0 LB-FT | | |
| Temp. Rise @ Rated Load: | | | | Locked-Rotor Torque: | 42.0 LB-FT | | |
| Temp. Rise @ S.F. Load: | | | | Starting Current: | 120.0 Amps | | |
| Load Characteristics | | | | | | | |
| % of Rated Load | 25 | 50 | 75 | 100 | 125 | 150 | S.F. |
| Power Factor: | 66.0 | 83.0 | 88.0 | 90.0 | 91.0 | 90.0 | 0.0 |
| Efficiency: | 82.9 | 88.6 | 89.8 | 89.5 | 88.2 | 86.5 | 0.0 |
| Speed: | 3574.0 | 3551.0 | 3526.0 | 3497.0 | 3464.0 | 3426.0 | 0.0 |
| Line Amperes: | 6.2 | 9.2 | 12.7 | 16.5 | 20.6 | 25.0 | 0.0 |

Performance Graph at 460V, 60Hz, 14.0HP Typical performance - Not guaranteed values





CD0005

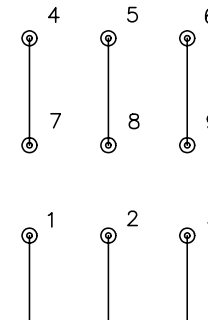


LOW VOLTAGE
(2Y)



LINE

HIGH VOLTAGE
(1Y)



LINE

NOTES:

1. INTERCHANGE ANY TWO LINE LEADS TO REVERSE ROTATION.
2. OPTIONAL THERMOSTATS ARE PROVIDED WHEN SPECIFIED.
3. ACTUAL NUMBER OF INTERNAL PARALLEL CIRCUITS MAY BE A MULTIPLE OF THOSE SHOWN ABOVE.
4. LEAD COLORS ARE OPTIONAL. LEADS MUST ALWAYS BE NUMBERED AS SHOWN.

| | | | |
|---|---------|-------------------------|--------------|
| REV. DESC: REVISE TO SHOW OPTIONAL COLORS | | | |
| REV. LTR: E | BY: JLP | REVISED: 01/19/99 10:15 | TDR: 0171435 |
| 90000 | | FILE: AAA00005140 | MDL: - |
| | | MTL: - | |

BALDOR ELECTRIC Co.

3PH, DV, 9 LEADS

CD0005