

# **BALDOR**® • ***RELIANCE***

## **Product Information Packet**

# **UCME7510**

**7.5HP,3450RPM,3PH,60HZ,184TZ,3640M,TEAO**

Copyright © All product information within this document is subject to Baldor Electric Company copyright © protection, unless otherwise noted.

Part Detail							
Revision:	P	Status:	PRD/A	Change #:		Proprietary:	No
Type:	AC	Prod. Type:	3640M	Elec. Spec:	36WGW514	CD Diagram:	
Enclosure:	TEAO	Mfg Plant:		Mech. Spec:	36F596	Layout:	
Frame:	184TZ	Mounting:	F1	Poles:	02	Created Date:	
Base:	RG	Rotation:	R	Insulation:	F	Eff. Date:	05-04-2009
Leads:	9#16 30" LG	Literature:	Y	Elec. Diagram:		Replaced By:	

Nameplate NP1279L							
CAT.NO.	UCME7510						
SPEC.	36F596W514G1						
HP	7.5-10 AIR OVER						
VOLTS	230/460						
AMP	23/11.5						
RPM	3450						
FRAME	184TZ	HZ	60	PH	3		
SER.F.	1.00	CODE	G	DES	B	CL	F
NEMA-NOM-EFF	86.5	PF	94				
RATING	40C AMB-CONT						
CC				USABLE AT 208V	23.5		
DE	6206	ODE	6205				
ENCL	TEAO	SN					

Nameplate NP1263L									
CAT.NO.	UCME7510								
SPEC.	36F596W514G1								
HP	7.5-10 AIR OVER								
VOLTS	230/460								
AMP	23/11.5								
RPM	3450								
FRAME	184TZ	HZ	60	PH	3				
SER.F.	1.00	CODE	G	DES	B	CL	F		
NEMA-NOM-EFF	86.5	PF	94						
RATING	40C AMB-CONT								
CC	USABLE AT 208V		23.5						
DE	6206	ODE	6205						
ENCL	TEAO	SN							

Parts List		
Part Number	Description	Quantity
SA035111	SA 36F596W514G1	1.000 EA
RA031138	RA 36F596W514G1	1.000 EA
HA6021A01SP	ADAPTOR, MACH	1.000 EA
36GS5000	GASKET CONDUIT ADAPTOR	1.000 EA
51XB1016A07	10-16 X 7/16 HXWSSLD SERTYB	2.000 EA
11XT0832G06	8-32 X 3/8 TY 23 TAPPING	1.000 EA
36EP3101A08	FR ENDPLATE, MACH	1.000 EA
HW4500A19	1/4-28X1/4 SLOTTED PLUG F/S	2.000 EA
HW5100A05	WVY WSHR F/205 & 304 BRGS	1.000 EA
36EP3100A06	PU ENDPLATE, MACH	1.000 EA
HW4500A19	1/4-28X1/4 SLOTTED PLUG F/S	2.000 EA
10XN2520A20	1/4-20X 1 1/4 HEX HD X	2.000 EA
HW1001A25	LOCKWASHER 1/4, ZINC PLT .493 OD, .255 I	2.000 EA
XY2520A12	1/4-20 HEX NUT, DIRECTIONAL SERRATIONS	4.000 EA
HW2501E18	KEY, 1/4 SQ X 2.000	1.000 EA
HA7000A02	KEY RETAINER RING, 1 1/8 DIA, 1 3/8 DIA	1.000 EA
85XU0407S04	4X1/4 U DRIVE PIN STAINLESS	2.000 EA
HW3200A01	3/8-16X3/4 I-BLT WELDED F/S	1.000 EA
MJ1000A75	GREASE, POLYREX EM EXXON	0.050 LB
MG1025C02	PAINT, 787.105 LITE TAN EPOXY (USE W/MG1	0.022 GA
MG1025Z20	ACTIVATOR WILKOFAS 060.32	0.010 GA
LB1115	LABEL,LIFTING DEVICE	1.000 EA
LB1001	LABEL, GREASE-EXXON POLYREX EM	1.000 EA
LD5000A22	LEAD ASSY, ML1400DF14 W/#10 RING TERM	1.000 EA

Parts List (continued)		
Part Number	Description	Quantity
HA3101A28	THRUBOLT 1/4-20 X 12.500 OHIO ROD	4.000 EA
LB1119	WARNING LABEL	1.000 EA
LB1125C01	STD (STOCK) CARTON LABEL BALDOR WITH FLA	1.000 EA
LC0145B01	CONNECTION LABEL	1.000 EA
NP1279L	ALUM FARM DUTY UL CSA CC	1.000 EA
NP1263L	AUX, GP, ALUM, CC, LASER ETCHED	1.000 EA
36PA1000	PACK GROUP W/LB5001	1.000 EA

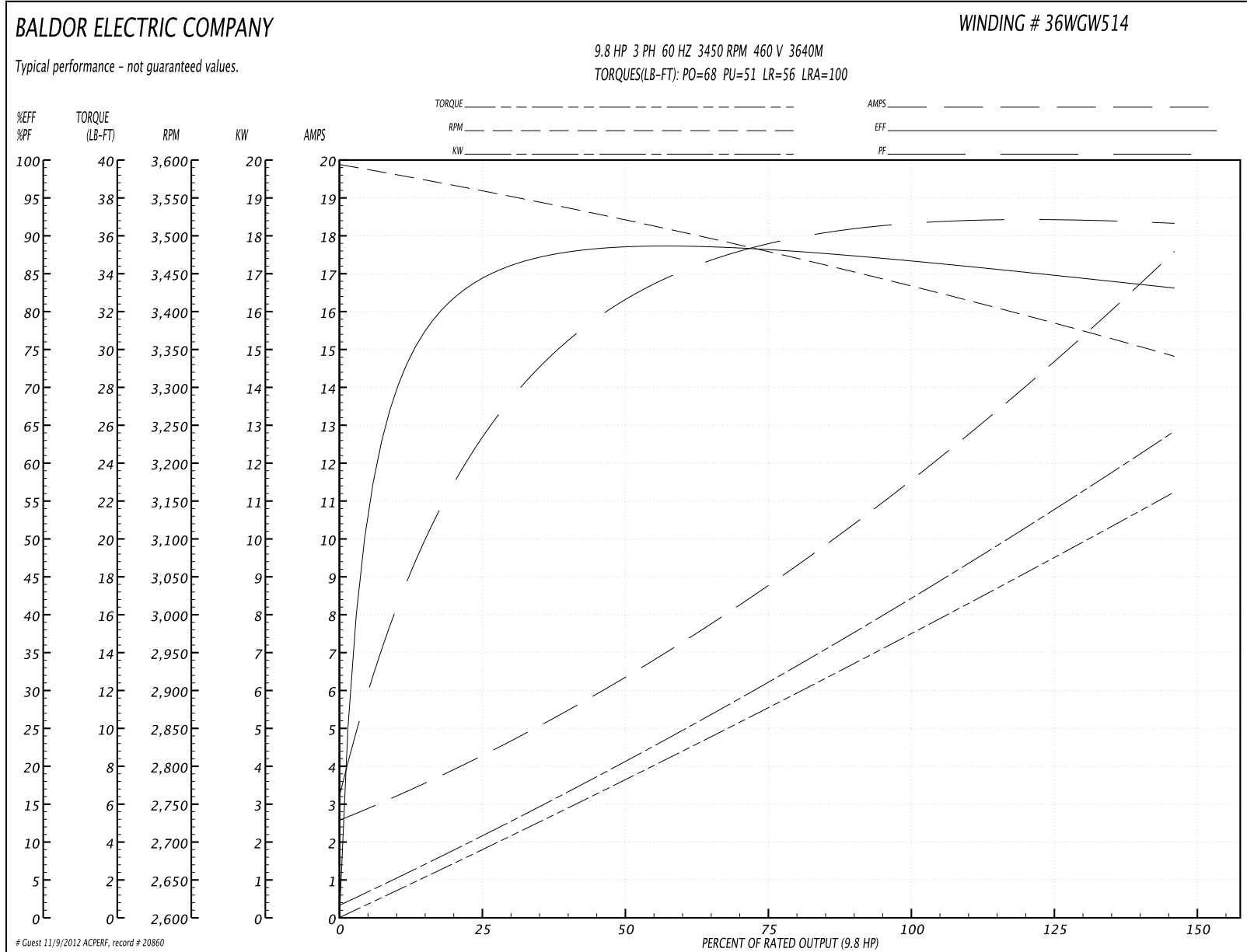
Accessories		
Part Number	Description	Multiplier
36-3301	C FACE KIT	A8
36EP1304A62SP	FLANGE MTD ENDPLATE 182-4TD -ENCL (LESS	A8

**Performance Data at 460V, 60Hz, 9.8HP (Typical performance - Not guaranteed values)**

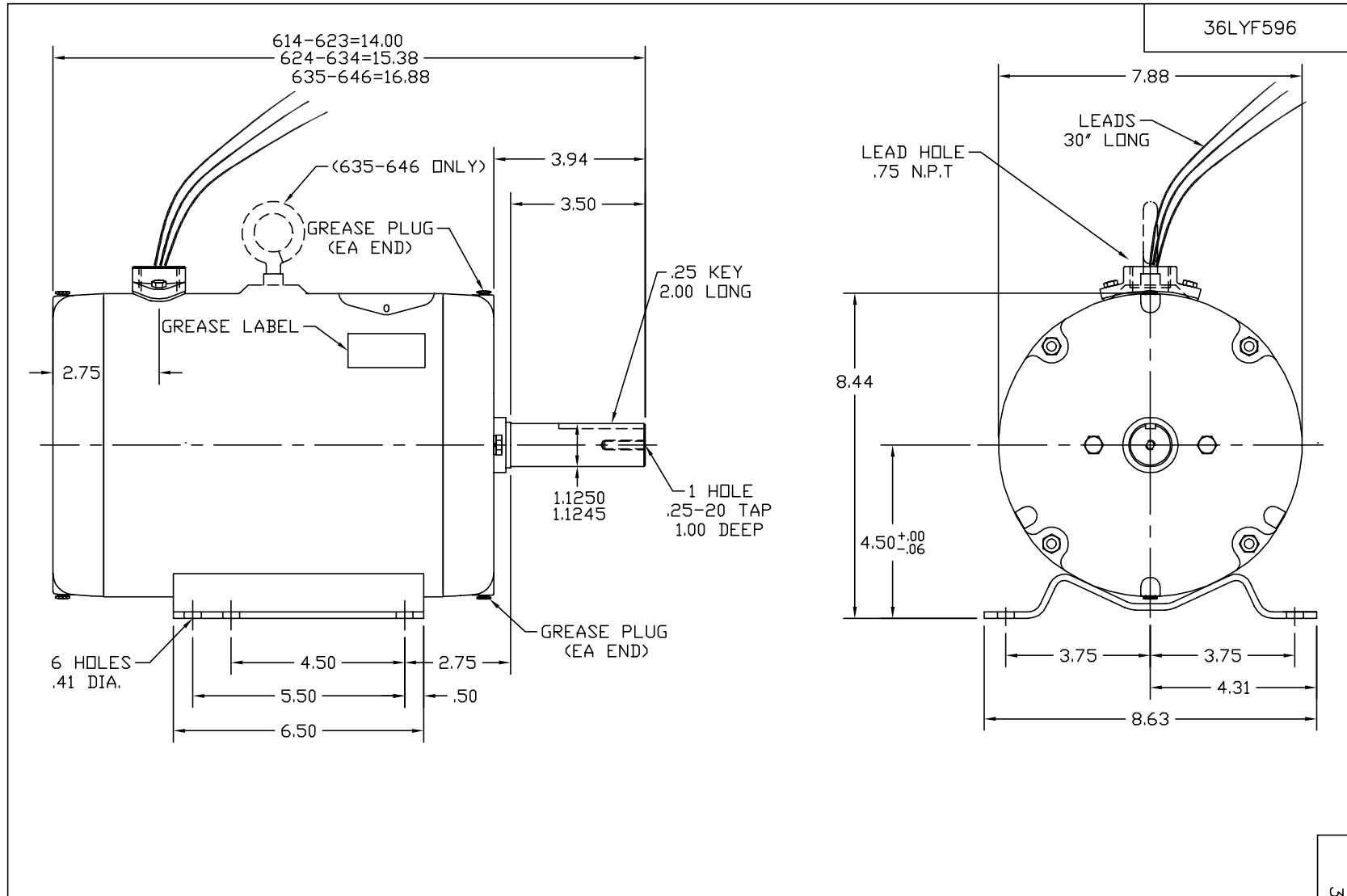
General Characteristics			
Full Load Torque:	15.0 LB-FT	Start Configuration:	DOL
No-Load Current:	2.7 Amps	Break-Down Torque:	68.0 LB-FT
Line-line Res. @ 25°C.:	1.32 Ohms A Ph / 0.0 Ohms B Ph	Pull-Up Torque:	51.0 LB-FT
Temp. Rise @ Rated Load:	72 C	Locked-Rotor Torque:	56.0 LB-FT
Temp. Rise @ S.F. Load:		Starting Current:	100.0 Amps

Load Characteristics							
% of Rated Load	25	50	75	100	125	150	S.F.
Power Factor:	76.0	89.0	93.0	95.0	95.0	94.0	0.0
Efficiency:	85.0	88.0	88.0	87.0	85.0	83.0	0.0
Speed:	3557.0	3518.0	3478.0	3434.0	3389.0	3340.0	0.0
Line Amperes:	4.1	6.5	9.0	11.6	14.4	17.6	0.0

Performance Graph at 460V, 60Hz, 9.8HP Typical performance - Not guaranteed values







CUSTOMER IS RESPONSIBLE FOR DETERMINING THAT MOTOR PERFORMANCE IS SUITABLE IN THE APPLICATION.

REV. DESC: ADD DIM. FROM FREP TO CENTER OF LEAD HOLE		
REV. LTR: K	VERSION: 01	TDR: 000000443387
96GJL79C	FILE: \AAA\00004\316	REVISED: 10:20:06 09/13/2007
	MTL: -	BY: ENMATRO



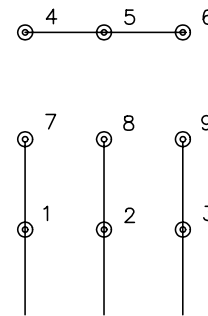
STD HORZ 182-4TZ TEAO 36M (UNIV CROP DRYER)

36LYF596

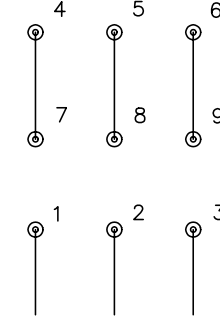
CD0005



LOW VOLTAGE  
(2Y)



HIGH VOLTAGE  
(1Y)



NOTES:

1. INTERCHANGE ANY TWO LINE LEADS TO REVERSE ROTATION.
2. OPTIONAL THERMOSTATS ARE PROVIDED WHEN SPECIFIED.
3. ACTUAL NUMBER OF INTERNAL PARALLEL CIRCUITS MAY BE A MULTIPLE OF THOSE SHOWN ABOVE.
4. LEAD COLORS ARE OPTIONAL. LEADS MUST ALWAYS BE NUMBERED AS SHOWN.

REV. DESC: REVISE TO SHOW OPTIONAL COLORS			
REV. LTR: E	BY: JLP	REVISED: 01/19/99 10:15	TDR: 0171435
90000		FILE: AAA00005140	MDL: -
		MTL: -	

**BALDOR ELECTRIC Co.**

3PH, DV, 9 LEADS

CD0005