

BALDOR® • **RELIANCE**

Product Information Packet

VBM3542

.75HP, 1725RPM, 3PH, 60HZ, 56C, BRAKE, 3428M

Copyright © All product information within this document is subject to Baldor Electric Company copyright © protection, unless otherwise noted.

Part Detail							
Revision:	P	Status:	PRD/A	Change #:		Proprietary:	No
Type:	AC	Prod. Type:	3428M	Elec. Spec:	34WG3820	CD Diagram:	
Enclosure:	TENV	Mfg Plant:		Mech. Spec:	34K045	Layout:	
Frame:	56C	Mounting:	F1	Poles:	04	Created Date:	
Base:	N	Rotation:	R	Insulation:	B	Eff. Date:	06-16-2011
Leads:	9#18	Literature:		Elec. Diagram:		Replaced By:	

Nameplate NP1256L									
CAT.NO.	VBM3542								
SPEC.	34K045-3820-C								
HP	.75								
VOLTS	208-230/460								
AMP	2.9-2.6/1.3								
RPM	1725								
FRAME	56C	HZ	60	PH	3				
SER.F.	1.00	CODE	L	DES	B	CLASS	B		
NEMA-NOM-EFF	75	PF	71						
RATING	40C AMB-CONT								
CC	USABLE AT 208V			2.9					
DE	6203	ODE	6203						
ENCL	TENV	SN							

Parts List		
Part Number	Description	Quantity
SA040528	SA 34K045-3820-C	1.000 EA
RA036412	RA 34K045-3820-C	1.000 EA
NS2512A01	INSULATOR, CONDUIT BOX X	1.000 EA
34CB3002A	CB CAST W/.88 DIA HOLE	1.000 EA
34GS1029A01	GASKET, CONDUIT BOX	1.000 EA
51XB1016A07	10-16 X 7/16 HXWSSLD SERTYB	2.000 EA
11XW1032G06	10-32 X .38, TAPTITE II, HEX WSHR SLTD U	1.000 EA
34EP3900T09	FR ENDPLATE, MACH	1.000 EA
HW5100A03SP	WAVY WASHER (W1543-017)	1.000 EA
34EP3300A24SP	PU ENDPLATE, MACH	1.000 EA
51XN1032A20	10-32 X 1 1/4 HX WS SL SR	2.000 EA
18XN2520A12	1/4-20 X 3/4",FL HD SL ZN	2.000 EA
HW2500A13	KEY, USA #605, WOODRUFF	1.000 EA
34CB4517	CB LID 4 MTG HOLES .22 DIA STAMPED, FOR	1.000 EA
34GS1031A01	GASKET, FLAT CONDUIT BOX LID (LEXIDE)	1.000 EA
51XW0832A07	8-32 X .44, TAPTITE II, HEX WSHR SLTD SE	4.000 EA
HW2501D13SP	KEY, 3/16 SQ X 1.375	1.000 EA
HA7000A04	KEY RETAINER 0.625 DIA SHAFTS	1.000 EA
MG1000G27	PAINT- S9282E CHARCOAL GREY	0.014 GA
10XF0440S02	04-40 X 1/8 TYPE F HEX HD STAINLESS STIC	2.000 EA
LB1185	LABEL,BRAKE CONNECTION (ON ROLLS)	1.000 EA
MJ5004A05	#242-21 LOCTITE GENERAL PURPOSE MED. STR	0.001 EA
WD4006C05	WIRENUT, G-B #13-003 ORGSIZE 73B,105C B	3.000 EA
HA3100A45	THRUBOLT 10-32 X 8.875	4.000 EA

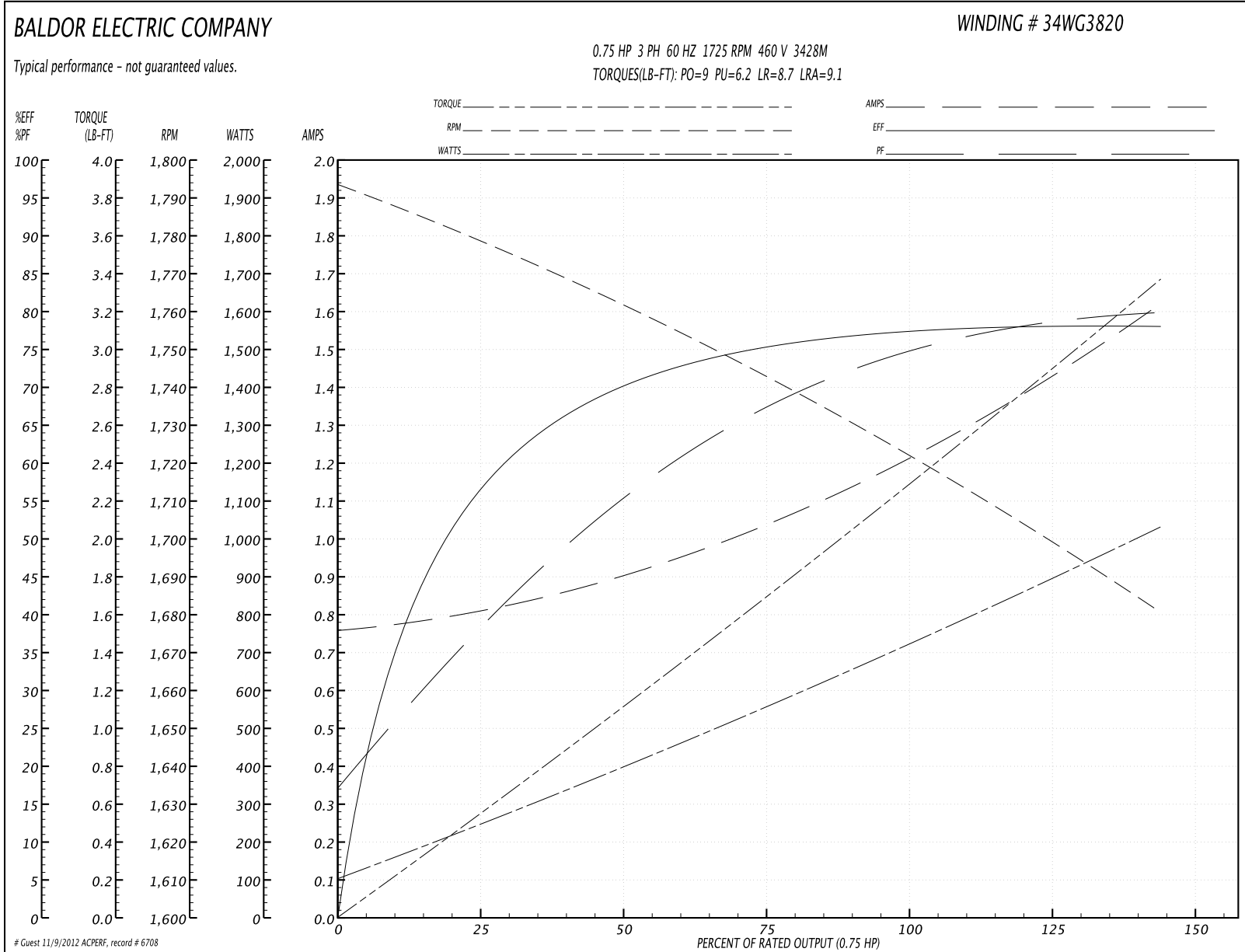
Parts List (continued)		
Part Number	Description	Quantity
48BK7101BP-	1-048-171-01-BP- BRAKE	1.000 EA
LB5040	INSTRUCTION TAG, AC & DC	1.000 EA
LB1125C01	STD (STOCK) CARTON LABEL BALDOR WITH FLA	1.000 EA
LC0005E01	CONN.DIA./WARNING LABEL (LC0005/LB1119)	1.000 EA
NP1256L	ALUM UL CSA CC	1.000 EA
27PA1001	PACKAGING GROUP	1.000 EA
PK3083T	STYROFOAM PACKING CRADLE W/TAPE	1.000 EA

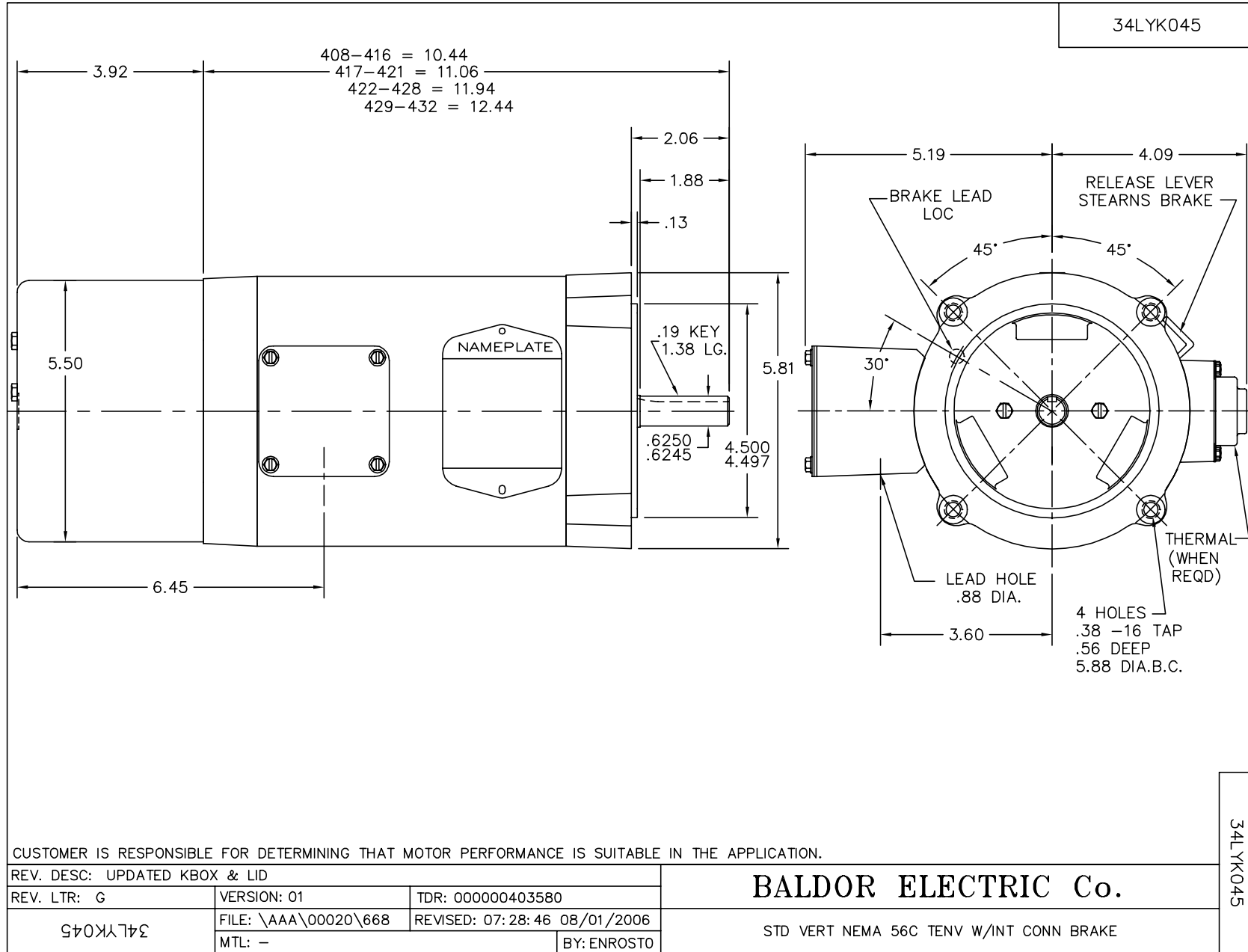
Performance Data at 460V, 60Hz, 0.75HP (Typical performance - Not guaranteed values)

General Characteristics			
Full Load Torque:	2.25 LB-FT	Start Configuration:	DOL
No-Load Current:	0.76 Amps	Break-Down Torque:	9.0 LB-FT
Line-line Res. @ 25°C.:	18.9 Ohms A Ph / 0.0 Ohms B Ph	Pull-Up Torque:	6.2 LB-FT
Temp. Rise @ Rated Load:	70 C	Locked-Rotor Torque:	8.7 LB-FT
Temp. Rise @ S.F. Load:		Starting Current:	9.1 Amps

Load Characteristics							
% of Rated Load	25	50	75	100	125	150	S.F.
Power Factor:	38.0	55.0	67.0	75.0	80.0	83.0	0.0
Efficiency:	57.0	70.0	75.0	77.7	78.0	78.0	0.0
Speed:	1778.0	1761.0	1743.0	1724.0	1703.0	1680.0	0.0
Line Amperes:	0.81	0.9	1.04	1.2	1.4	1.62	0.0

Performance Graph at 460V, 60Hz, 0.75HP Typical performance - Not guaranteed values





CD0005

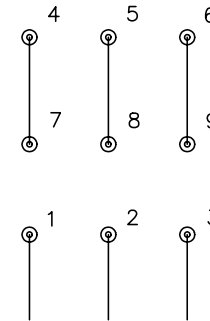


LOW VOLTAGE
(2Y)



LINE

HIGH VOLTAGE
(1Y)



LINE

NOTES:

1. INTERCHANGE ANY TWO LINE LEADS TO REVERSE ROTATION.
2. OPTIONAL THERMOSTATS ARE PROVIDED WHEN SPECIFIED.
3. ACTUAL NUMBER OF INTERNAL PARALLEL CIRCUITS MAY BE A MULTIPLE OF THOSE SHOWN ABOVE.
4. LEAD COLORS ARE OPTIONAL. LEADS MUST ALWAYS BE NUMBERED AS SHOWN.

REV. DESC: REVISE TO SHOW OPTIONAL COLORS			
REV. LTR: E	BY: JLP	REVISED: 01/19/99 10:15	TDR: 0171435
90000		FILE: AAA00005140	MDL: -
		MTL: -	

BALDOR ELECTRIC Co.

3PH, DV, 9 LEADS

CD0005