

BALDOR® • RELIANCE

Product Information Packet

WALKER INDUSTRIAL PRODUCTS, INC.

VEM31116

1HP,1750RPM,3PH,60HZ,56C,3520M,OPEN,F1,N

Part Detail							
Revision:	A	Status:	PRD/A	Change #:		Proprietary:	No
Type:	AC	Prod. Type:	3520M	Elec. Spec:	35WGN726	CD Diagram:	CD0005
Enclosure:	OPEN	Mfg Plant:		Mech. Spec:	35E4017	Layout:	35LYE4017
Frame:	56C	Mounting:	F1	Poles:	04	Created Date:	10-23-2014
Base:	N	Rotation:	R	Insulation:	F	Eff. Date:	04-13-2015
Leads:	9#18					Replaced By:	
Literature:		Elec. Diagram:					

Nameplate NP3155L							
CAT.NO.	VEM31116						
SPEC.	35E4017N726G1						
HP	1						
VOLTS	208-230/460						
AMP	3-2.9/1.45						
RPM	1750						
FRAME	56C	HZ	60	PH	3		
SER.F.	1.15	CODE	M	DES	B	CL	F
F.L. AVG. EFF.	83.5	PF	73				
RATING	40C AMB-CONT						
CC		USABLE AT 208V					
DE	6205	ODE	6203				
ENCL	OPEN	SN					

AC Induction Motor Performance Data

Record # 49387 - Typical performance - not guaranteed values

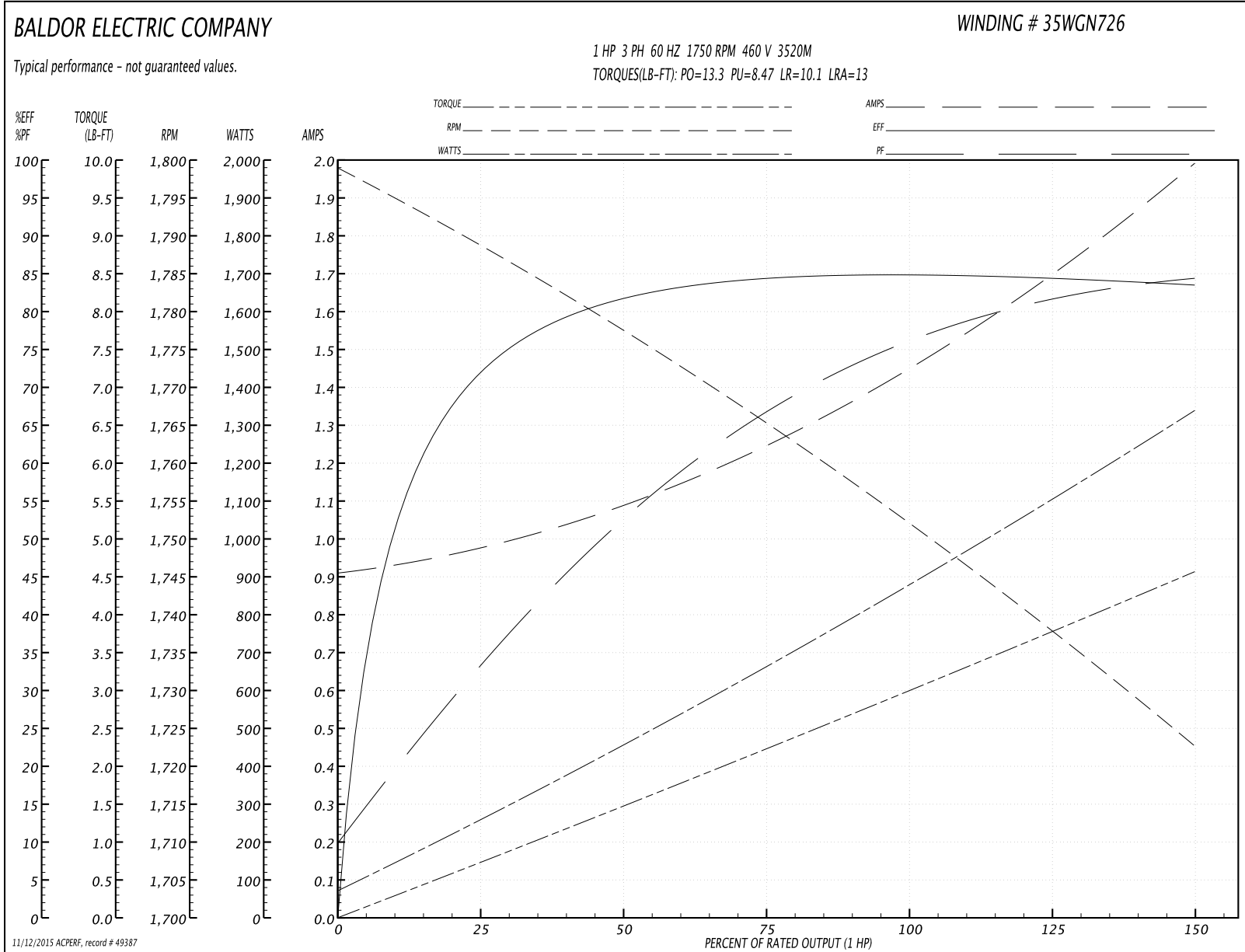
Winding: 35WGN726-R001	Type: 3520M	Enclosure: OPEN
-------------------------------	--------------------	------------------------

Nameplate Data				460 V, 60 Hz: High Voltage Connection	
Rated Output (HP)	1			Full Load Torque	3.01 LB-FT
Volts	208-230/460			Start Configuration	direct on line
Full Load Amps	3-2.9/1.45			Breakdown Torque	13.3 LB-FT
R.P.M.	1750			Pull-up Torque	8.47 LB-FT
Hz	60	Phase	3	Locked-rotor Torque	10.1 LB-FT
NEMA Design Code	B	KVA Code	M	Starting Current	13 A
Service Factor (S.F.)	1.15			No-load Current	0.921 A
NEMA Nom. Eff.	83.5	Power Factor	73	Line-line Res. @ 25°C	16.132 Ω
Rating - Duty	40C AMB-CONT			Temp. Rise @ Rated Load	28°C
S.F. Amps				Temp. Rise @ S.F. Load	33°C

Load Characteristics 460 V, 60 Hz, 1 HP

% of Rated Load	25	50	75	100	125	150	S.F.
Power Factor	34	53	67	75	81	85	79
Efficiency	71.6	81.4	84.3	84.9	84.5	83.5	84.7
Speed	1789	1777.5	1764.9	1751.9	1738.1	1722.6	1744
Line amperes	0.963	1.08	1.25	1.46	1.71	1.98	1.61

Performance Graph at 460V, 60Hz, 1.0HP Typical performance - Not guaranteed values



AC Induction Motor Performance Data

Record # 49388 - Typical performance - not guaranteed values

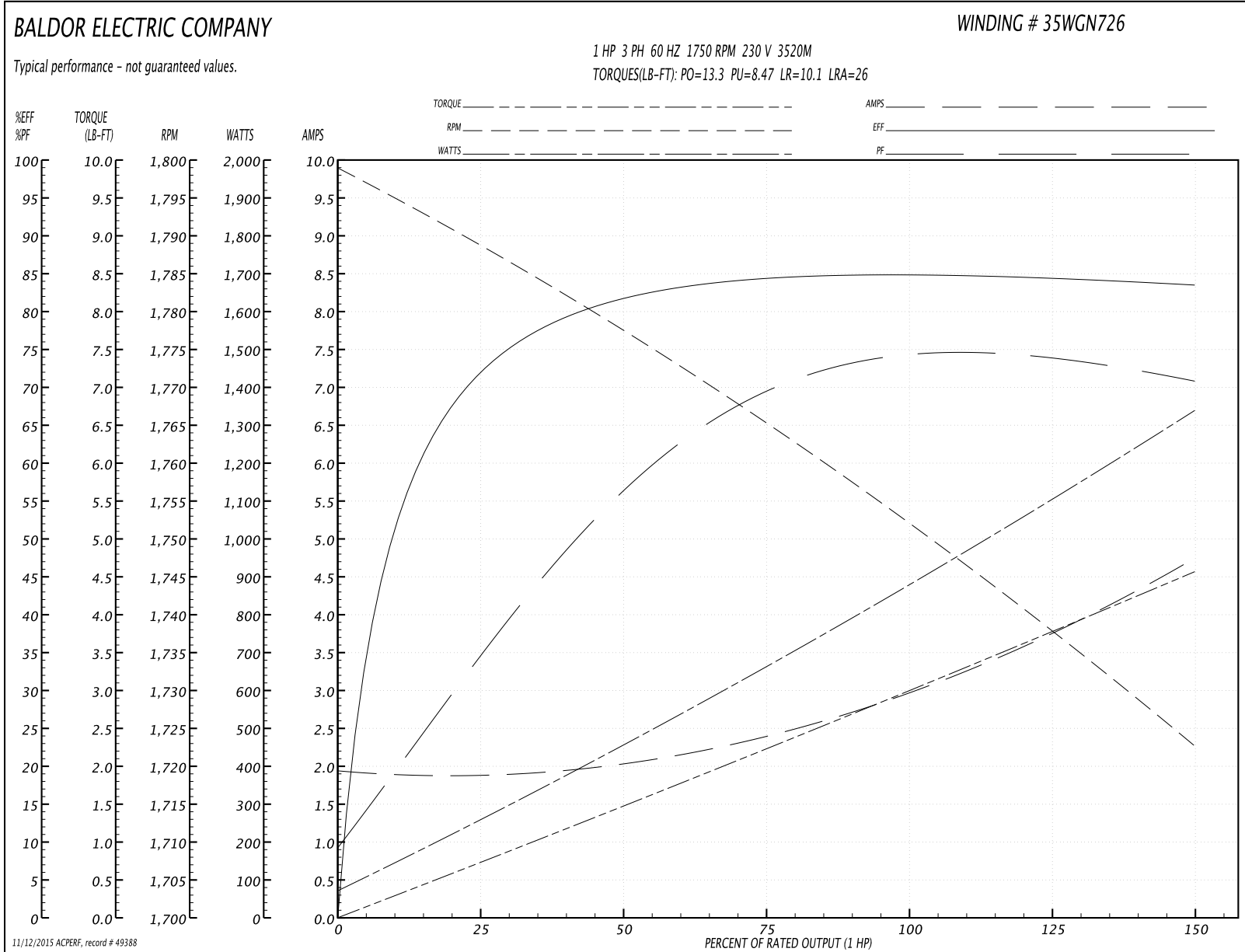
Winding: 35WGN726-R001	Type: 3520M	Enclosure: OPEN
-------------------------------	--------------------	------------------------

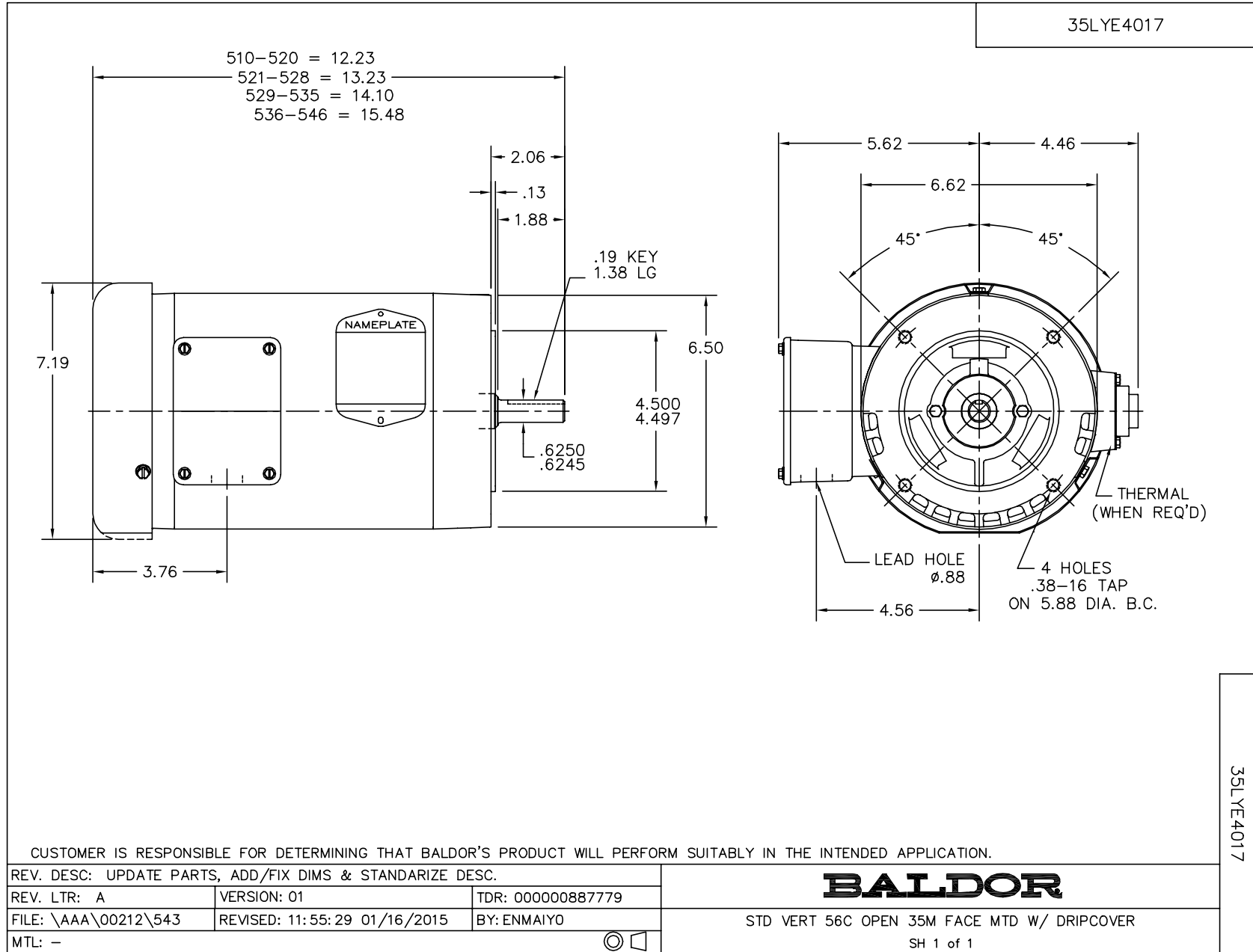
Nameplate Data				230 V, 60 Hz: High Voltage Connection	
Rated Output (HP)	1			Full Load Torque	3.01 LB-FT
Volts	208-230/460			Start Configuration	direct on line
Full Load Amps	3-2.9/1.45			Breakdown Torque	13.3 LB-FT
R.P.M.	1750			Pull-up Torque	8.47 LB-FT
Hz	60	Phase	3	Locked-rotor Torque	10.1 LB-FT
NEMA Design Code	B	KVA Code	M	Starting Current	26 A
Service Factor (S.F.)	1.15			No-load Current	1.842 A
NEMA Nom. Eff.	83.5	Power Factor	73	Line-line Res. @ 25°C	4.033 Ω
Rating - Duty	40C AMB-CONT			Temp. Rise @ Rated Load	28°C
S.F. Amps				Temp. Rise @ S.F. Load	33°C

Load Characteristics 230 V, 60 Hz, 1 HP

% of Rated Load	25	50	75	100	125	150	S.F.
Power Factor	34	53	67	76	81	68	79
Efficiency	71.6	81.4	84.3	84.9	84.5	83.5	84.7
Speed	1789	1777.5	1764.9	1751.9	1738.1	1722.6	1744
Line amperes	1.926	2.16	2.5	2.92	3.42	4.96	3.22

Performance Graph at 230V, 60Hz, 1.0HP Typical performance - Not guaranteed values

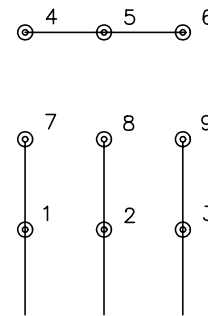




CD0005

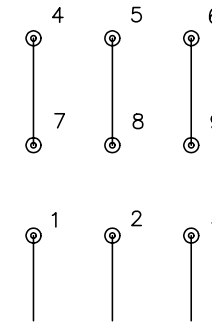


LOW VOLTAGE
(2Y)



LINE

HIGH VOLTAGE
(1Y)



LINE

NOTES:

1. INTERCHANGE ANY TWO LINE LEADS TO REVERSE ROTATION.
2. OPTIONAL THERMOSTATS ARE PROVIDED WHEN SPECIFIED.
3. ACTUAL NUMBER OF INTERNAL PARALLEL CIRCUITS MAY BE A MULTIPLE OF THOSE SHOWN ABOVE.
4. LEAD COLORS ARE OPTIONAL. LEADS MUST ALWAYS BE NUMBERED AS SHOWN.

REV. DESC: REVISE TO SHOW OPTIONAL COLORS			
REV. LTR: E	BY: JLP	REVISED: 01/19/99 10:15	TDR: 0171435
90000		FILE: AAA00005140	MDL: -
		MTL: -	

BALDOR ELECTRIC Co.

3PH, DV, 9 LEADS

CD0005