

BALDOR® • RELIANCE

Product Information Packet

VEWDM3710T

7.5HP, 1770RPM, 3PH, 60HZ, 213TC, 3736M, TEFC

Copyright © All product information within this document is subject to Baldor Electric Company copyright © protection, unless otherwise noted.

| Part Detail | | | | | | | |
|-------------|-------|-------------|-------|----------------|----------|---------------|------------|
| Revision: | H | Status: | PRD/A | Change #: | | Proprietary: | No |
| Type: | AC | Prod. Type: | 3736M | Elec. Spec: | 37WGT859 | CD Diagram: | |
| Enclosure: | TEFC | Mfg Plant: | | Mech. Spec: | 37H875 | Layout: | |
| Frame: | 213TC | Mounting: | F1 | Poles: | 04 | Created Date: | |
| Base: | N | Rotation: | R | Insulation: | F | Eff. Date: | 12-16-2009 |
| Leads: | 9#14 | Literature: | | Elec. Diagram: | | Replaced By: | |

| Nameplate NP1669L | | | | | | | | | |
|-------------------|--------------|----------------|------|-----|---|-------|---|--|--|
| CAT.NO. | VEWDM3710T | | | | | | | | |
| SPEC. | 37H875T859G1 | | | | | | | | |
| HP | 7.5 | | | | | | | | |
| VOLTS | 230/460 | | | | | | | | |
| AMP | 18.8/9.4 | | | | | | | | |
| RPM | 1770 | | | | | | | | |
| FRAME | 213TC | HZ | 60 | PH | 3 | | | | |
| SER.F. | 1.15 | CODE | J | DES | A | CLASS | F | | |
| NEMA-NOM-EFF | 91.7 | PF | 81 | | | | | | |
| RATING | 40C AMB-CONT | | | | | | | | |
| CC | 010A | USABLE AT 208V | 21 | | | | | | |
| DE | 6307 | ODE | 6206 | | | | | | |
| ENCL | TEFC | SN | | | | | | | |
| BLANK | | | | | | | | | |

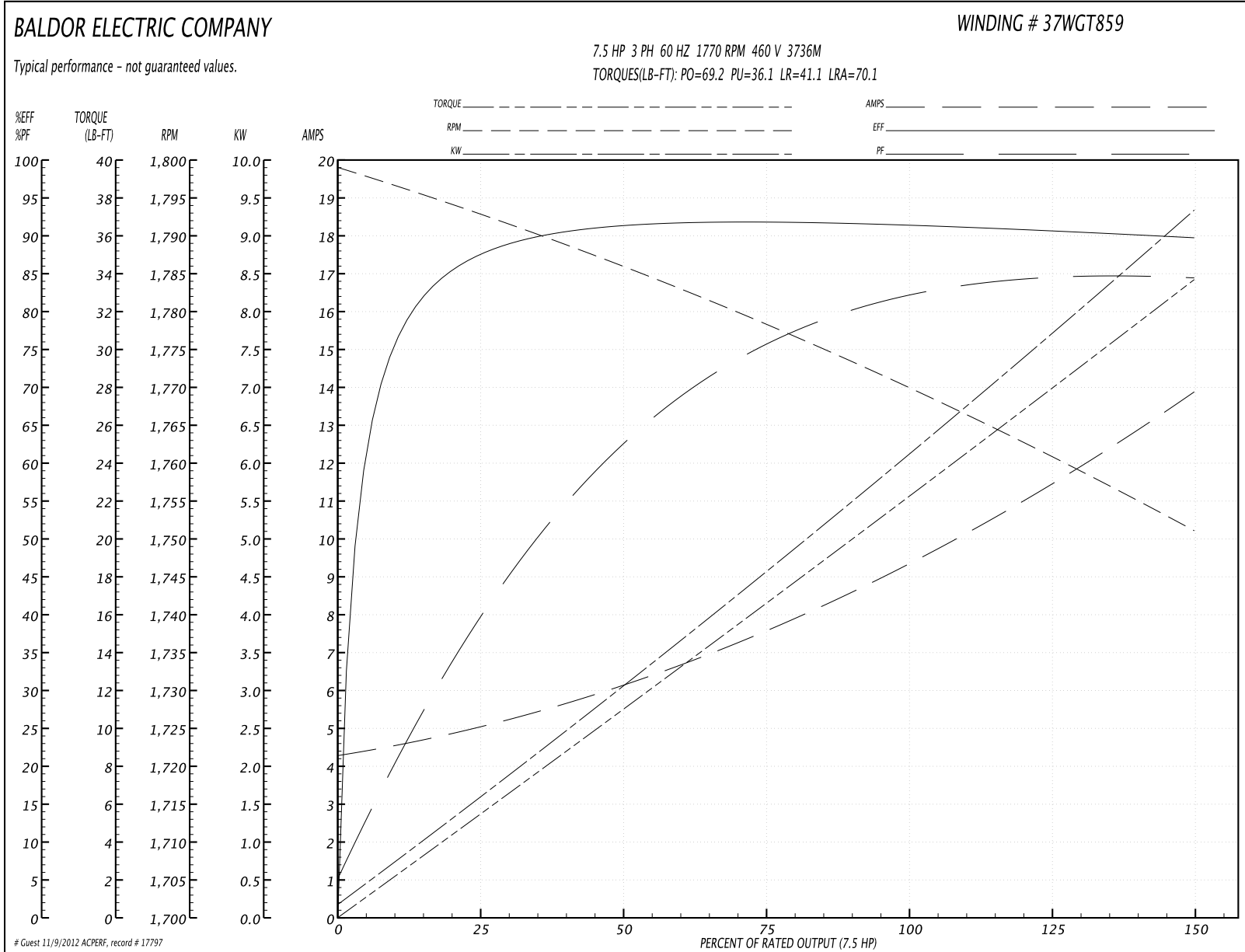
| Parts List | | |
|----------------|--|----------|
| Part Number | Description | Quantity |
| SA126445 | SA 37H875T859G1 | 1.000 EA |
| RA116750 | RA 37H875T859G1 | 1.000 EA |
| 37FN3002C01 | EXFN, PLASTIC, 6.00 OD, 1.155 ID | 1.000 EA |
| S/P107-000-001 | SUPER E PROC'S-FS & WS PLTS-POLYREX EM G | 1.000 EA |
| HW3200A01 | 3/8-16X3/4 I-BLT WELDED F/S | 1.000 EA |
| 37CB3005A04W | CASTING W/.75 NPT@6(MACH WHITE) | 1.000 EA |
| 37GS1015 | GASKET, FOR 37 WD KOBX'S (SANTOPRENE) | 1.000 EA |
| 51XW2520A12 | .25-20 X .75, TAPTITE II, HEX WSHR SLTD | 2.000 EA |
| 11XW1032G06 | 10-32 X .38, TAPTITE II, HEX WSHR SLTD U | 1.000 EA |
| 37EP3101A94MW | FRONT TEFC L&M 206 BRG W/O GR SR (WHITE) | 1.000 EA |
| HW4032A01 | BLACK DRAIN PLUG FOR WASH DOWN MOTORS | 3.000 EA |
| HW5100A06 | W2420-025 WVY WSHR (WB) | 1.000 EA |
| 37EP3300A23MW | WHITE EPOXY EP MACH COMPL | 1.000 EA |
| HW4032A01 | BLACK DRAIN PLUG FOR WASH DOWN MOTORS | 3.000 EA |
| HW4600B51SP | SEAL 1.375 X 2.125 X 0.313 SINGLE LIP DB | 1.000 EA |
| 10XN2520S30 | 1/4-20 X 1 7/8 HEX HEAD SS | 4.000 EA |
| XY3118S12 | 5/16-18 HEX NUT, STAINLESS STEEL | 4.000 EA |
| 11XW1032S06 | SCREW, HXWSHR HD SLDTYF 410 SS | 3.000 EA |
| HA1005A02SP | SLINGER, OD 2.00, ID 1.14, 206 BRG, | 1.000 EA |
| HW4600B31SP | V-RING SLINGER #V38A,1.42/1.50 SH BORE | 1.000 EA |
| 37CB4512 | CONDUIT BOX LID FOR WASHDOWN 37 FRAME | 1.000 EA |
| 37GS1008A02 | 37 GS FOR CB LID - WHITE NEOPRENE | 1.000 EA |
| 59XN0832S07 | 8/32 X 7/16 HX WS HD SER X | 4.000 EA |
| HW2502F21 | #303 SS,SQ KEY 5/16 X 2.375 | 1.000 EA |

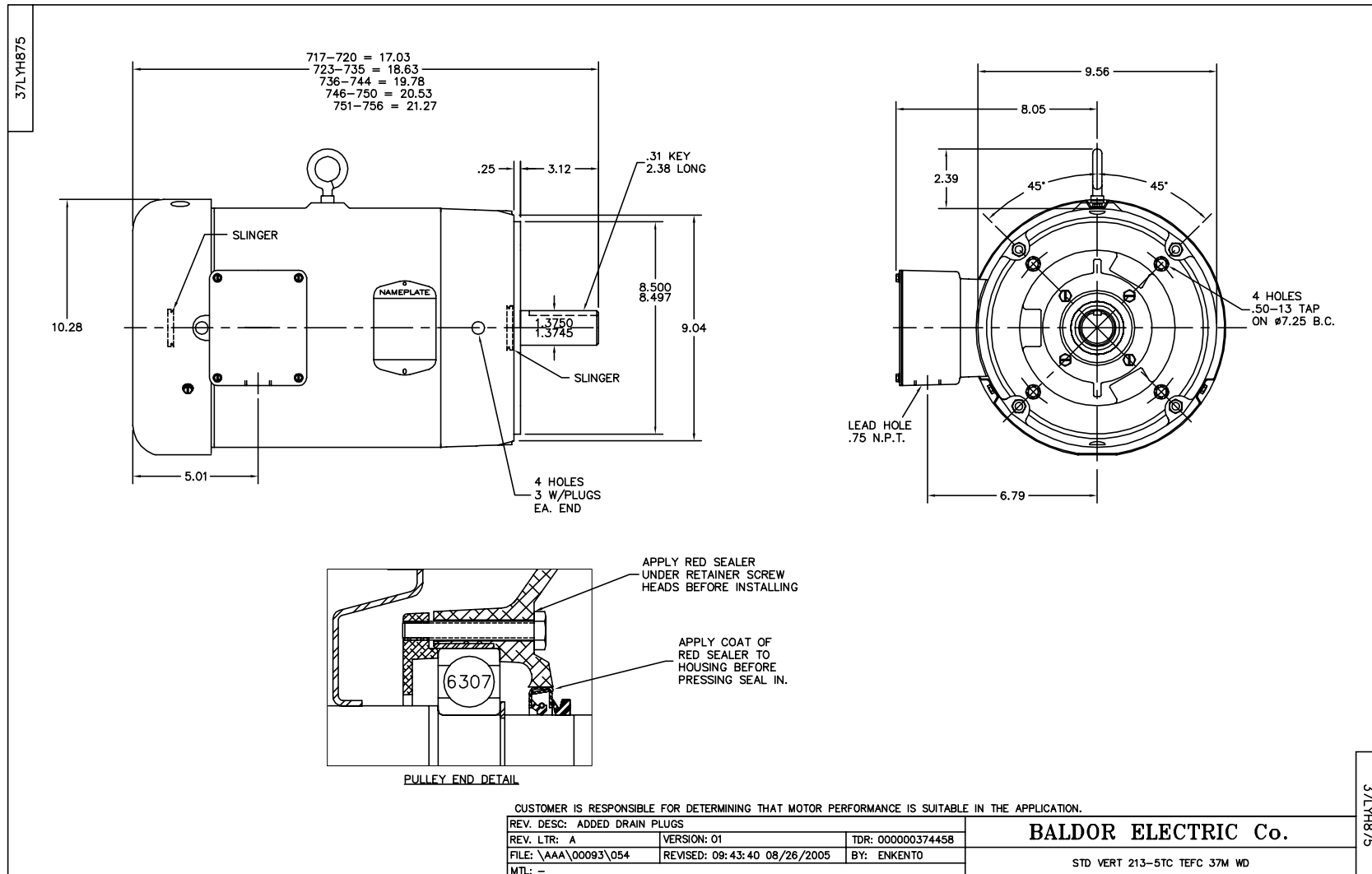
| Parts List (continued) | | |
|------------------------|--|----------|
| Part Number | Description | Quantity |
| HA7000A02 | KEY RETAINER RING, 1 1/8 DIA, 1 3/8 DIA | 1.000 EA |
| MJ5001A01 | 46-665 RED SEALER | 0.001 QT |
| LB1115 | LABEL,LIFTING DEVICE | 1.000 EA |
| 85XU0407S04 | 4X1/4 U DRIVE PIN STAINLESS | 2.000 EA |
| MJ1000A75 | GREASE, POLYREX EM EXXON | 0.050 LB |
| 51XB1214A20 | 12-14X1.25 HXWSSLD SERTYB | 1.000 EA |
| 07FH4011 | WASHDOWN IEC FH W/AUTOPHORETIC PRIMER | 1.000 EA |
| MG1025Z20 | ACTIVATOR WILKOFAS 060.32 | 0.010 GA |
| MG1025W11 | PAINT- 781-101 WILKOFAS WHITE EPOXY | 0.028 GA |
| LB1164 | LABEL,WARNING AND DRAIN | 1.000 EA |
| HA3104S17 | THRUBOLT 13.250LG SS | 4.000 EA |
| LB1125C02 | SUPER-E (STOCK CTN LABEL SUPER-E WITH FL | 1.000 EA |
| LC0005 | CONN.DIA.,TY M,9-LD,DUAL VOLT,REVERSING | 1.000 EA |
| NP1669L | SS WD SUPER-E UL CSA-EEV PREM REV MTG | 1.000 EA |
| 36PA1001 | PACKAGING GROUP | 1.000 EA |
| PK3082 | STYROFOAM CRADLE | 1.000 EA |
| LB1357 | ENERGY GUIDE LABEL (BOX LABEL) | 1.000 SH |

Performance Data at 460V, 60Hz, 7.5HP (Typical performance - Not guaranteed values)

| General Characteristics | | | | | | | |
|--------------------------|--------------------------------|--------|--------|----------------------|------------|--------|--------|
| Full Load Torque: | 22.4 LB-FT | | | Start Configuration: | DOL | | |
| No-Load Current: | 4.4 Amps | | | Break-Down Torque: | 69.2 LB-FT | | |
| Line-line Res. @ 25°C.: | 1.37 Ohms A Ph / 0.0 Ohms B Ph | | | Pull-Up Torque: | 36.1 LB-FT | | |
| Temp. Rise @ Rated Load: | 53 C | | | Locked-Rotor Torque: | 41.1 LB-FT | | |
| Temp. Rise @ S.F. Load: | 65 C | | | Starting Current: | 70.1 Amps | | |
| Load Characteristics | | | | | | | |
| % of Rated Load | 25 | 50 | 75 | 100 | 125 | 150 | S.F. |
| Power Factor: | 41.0 | 63.0 | 75.0 | 81.0 | 84.0 | 85.0 | 83.0 |
| Efficiency: | 88.6 | 92.2 | 92.7 | 92.2 | 91.3 | 90.1 | 91.7 |
| Speed: | 1793.0 | 1786.0 | 1778.0 | 1770.0 | 1761.0 | 1751.0 | 1765.0 |
| Line Amperes: | 4.88 | 6.08 | 7.59 | 9.49 | 11.5 | 13.8 | 10.7 |

Performance Graph at 460V, 60Hz, 7.5HP Typical performance - Not guaranteed values





CD0005

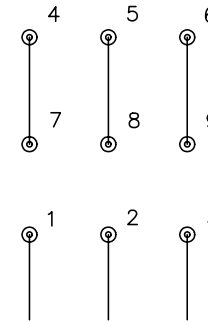


LOW VOLTAGE
(2Y)



LINE

HIGH VOLTAGE
(1Y)



LINE

NOTES:

1. INTERCHANGE ANY TWO LINE LEADS TO REVERSE ROTATION.
2. OPTIONAL THERMOSTATS ARE PROVIDED WHEN SPECIFIED.
3. ACTUAL NUMBER OF INTERNAL PARALLEL CIRCUITS MAY BE A MULTIPLE OF THOSE SHOWN ABOVE.
4. LEAD COLORS ARE OPTIONAL. LEADS MUST ALWAYS BE NUMBERED AS SHOWN.

| | | | |
|---|---------|-------------------------|--------------|
| REV. DESC: REVISE TO SHOW OPTIONAL COLORS | | | |
| REV. LTR: E | BY: JLP | REVISED: 01/19/99 10:15 | TDR: 0171435 |
| 90000 | | FILE: AAA00005140 | MDL: - |
| | | MTL: - | |

BALDOR ELECTRIC Co.

3PH, DV, 9 LEADS

CD0005