

BALDOR® • RELIANCE

Product Information Packet

VL1406T

3HP,3450RPM,1PH,60HZ,182TC,3532LC,ODTF

Copyright © All product information within this document is subject to Baldor Electric Company copyright © protection, unless otherwise noted.

Part Detail							
Revision:	P	Status:	PRD/A	Change #:		Proprietary:	No
Type:	AC	Prod. Type:	3532LC	Elec. Spec:	35WGZ508	CD Diagram:	
Enclosure:	ODTF	Mfg Plant:		Mech. Spec:	35U226	Layout:	
Frame:	182TC	Mounting:	F1	Poles:	02	Created Date:	06-22-2007
Base:	N	Rotation:	R	Insulation:	B	Eff. Date:	05-04-2012
Leads:	4#14 A PH,2#18 B PH	Literature:		Elec. Diagram:		Replaced By:	

Nameplate NP1256L

CAT.NO.	VL1406T						
SPEC.	35U226Z508						
HP	3						
VOLTS	115/230						
AMP	27.2/13.6						
RPM	3450						
FRAME	182TC	HZ	60	PH	1		
SER.F.	1.15	CODE	H	DES	L	CLASS	B
NEMA-NOM-EFF	75.5	PF	92				
RATING	40C AMB-CONT						
CC		USABLE AT 208V	14.7				
DE	6206	ODE	6203				
ENCL	ODTF	SN					

Parts List		
Part Number	Description	Quantity
SA112629	SA 35U226Z508	1.000 EA
RA103883	RA 35U226Z508	1.000 EA
OC3040F09SP	CYL OIL CAP 40MFD/370V	1.000 EA
EC1815A06SP	ELEC CAP 115V 2.0 X 4.3	1.000 EA
NS2512A01	INSULATOR, CONDUIT BOX X	1.000 EA
35CB3009	35 CB CASTING W/1.09 DIA. LEAD HOLE @ 6:	1.000 EA
51XB1016A07	10-16 X 7/16 HXWSSLD SERTYB	2.000 EA
11XW1032G06	10-32 X .38, TAPTITE II, HEX WSHR SLTD U	1.000 EA
35EP3201A02	FR ENDPLATE, MACH	1.000 EA
HW4500A01	1641B(ALEMITE)400 UNIV, GREASE FITT	1.000 EA
51XW0832A07	8-32 X .44, TAPTITE II, HEX WSHR SLTD SE	2.000 EA
35CB3801SP	CAPACITOR COVER, CAST	1.000 EA
HA7010	CAPACITOR RETENTION CLAMP	1.000 EA
NS2501A02	INSULATOR, CAPACITOR BOX	1.000 EA
51XB1016A08	10-16X 1/2HXWSSLD SERTYB	2.000 EA
HW5100A03SP	WAVY WASHER (W1543-017)	1.000 EA
35EP1409A01	PU ENDPLATE, MACH	1.000 EA
35AD2001	AIR BAFFLE	1.000 EA
60XW0632A06	6-32 X 3/8 TORX HEAD SCREW TAPTITE II	4.000 EA
HW4500A01	1641B(ALEMITE)400 UNIV, GREASE FITT	1.000 EA
10XN2520A24	1/4-20X 1 1/2 HEX HD X	4.000 EA
HW1001A25	LOCKWASHER 1/4, ZINC PLT .493 OD, .255 I	4.000 EA
35FN3002A05SP	EXFN, PLASTIC, 6.376 OD, .638 ID	1.000 EA
51XB1214A16	12-14X1.00 HXWSSLD SERTYB	1.000 EA

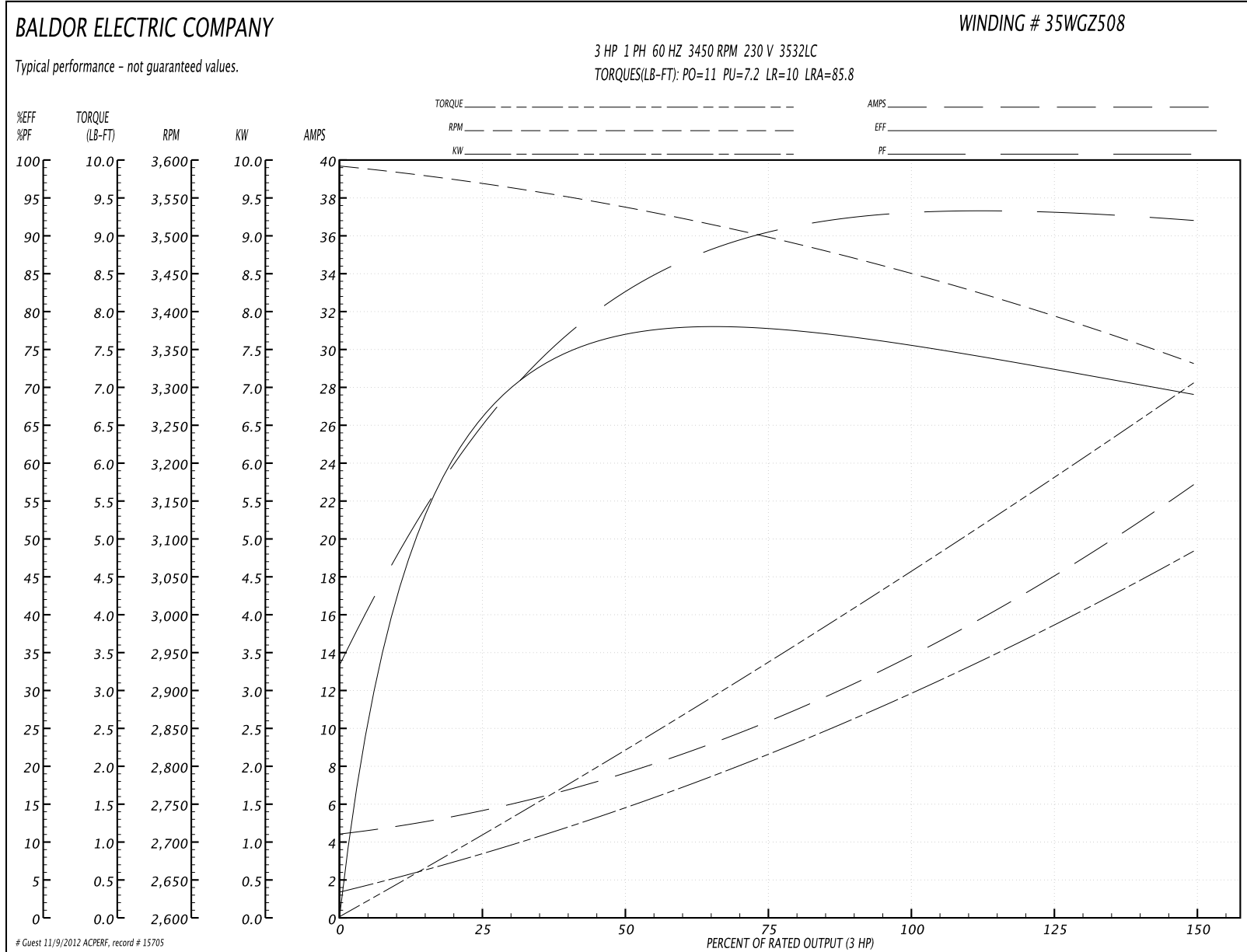
Parts List (continued)		
Part Number	Description	Quantity
35FH4006A04	DRIP COVER SPECIAL, W/ AUTOPHERETIC PRIM	1.000 EA
51XW1032A06	10-32 X .38, TAPTITE II, HEX WSHR SLTD S	3.000 EA
35CB4521	35 LIPPED CB LID (GALV & PHOSPH)	1.000 EA
51XW0832A07	8-32 X .44, TAPTITE II, HEX WSHR SLTD SE	4.000 EA
HW2501E16	3KEY, 1/4 SQ X 1.750	1.000 EA
HA7000A02	KEY RETAINER RING, 1 1/8 DIA, 1 3/8 DIA	1.000 EA
85XU0407S04	4X1/4 U DRIVE PIN STAINLESS	2.000 EA
WD1000A15	3-520132-2 AMP FLAG (4M/RL NON-CANC/NON-	4.000 EA
MJ1000A75	GREASE, POLYREX EM EXXON	0.050 LB
MG1000G27	PAINT- S9282E CHARCOAL GREY	0.017 GA
HA3100A18	THRUBOLT 10-32 X 9.250	4.000 EA
SP5181A28	MODEL 35 LC TORQ STAT SWITCH LEAD ASSY	1.000 EA
LB1125C01	STD (STOCK) CARTON LABEL BALDOR WITH FLA	1.000 EA
LC0001A01	CONN LABEL / WARNING LABEL (LC0001 / LB1	1.000 EA
NP1256L	ALUM UL CSA CC	1.000 EA
36PA1000	PACK GROUP W/LB5001	1.000 EA
PK3082	STYROFOAM CRADLE	1.000 EA

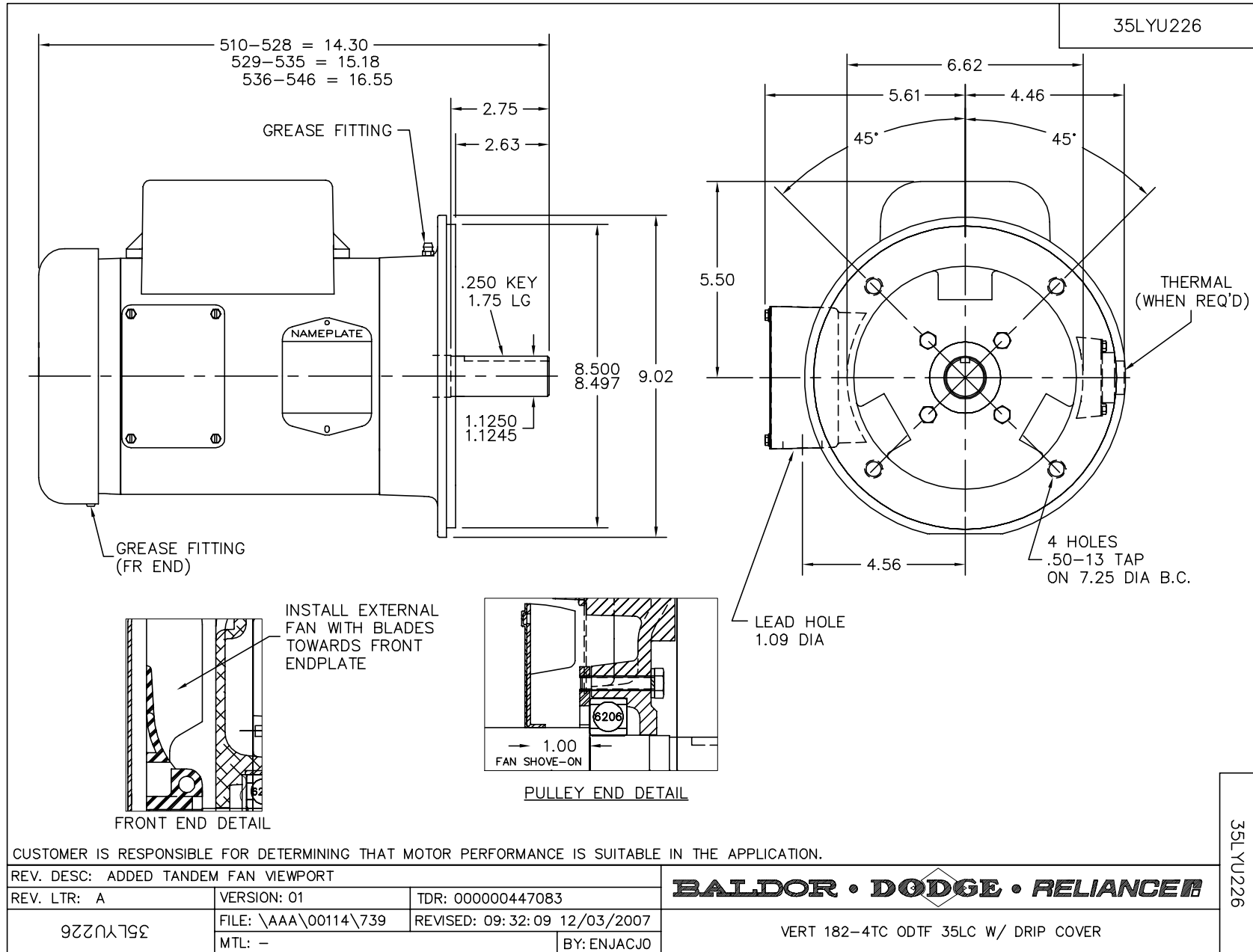
Accessories		
Part Number	Description	Multiplier
35-1409	C FACE KIT	A8

Performance Data at 230V, 60Hz, 3.0HP (Typical performance - Not guaranteed values)

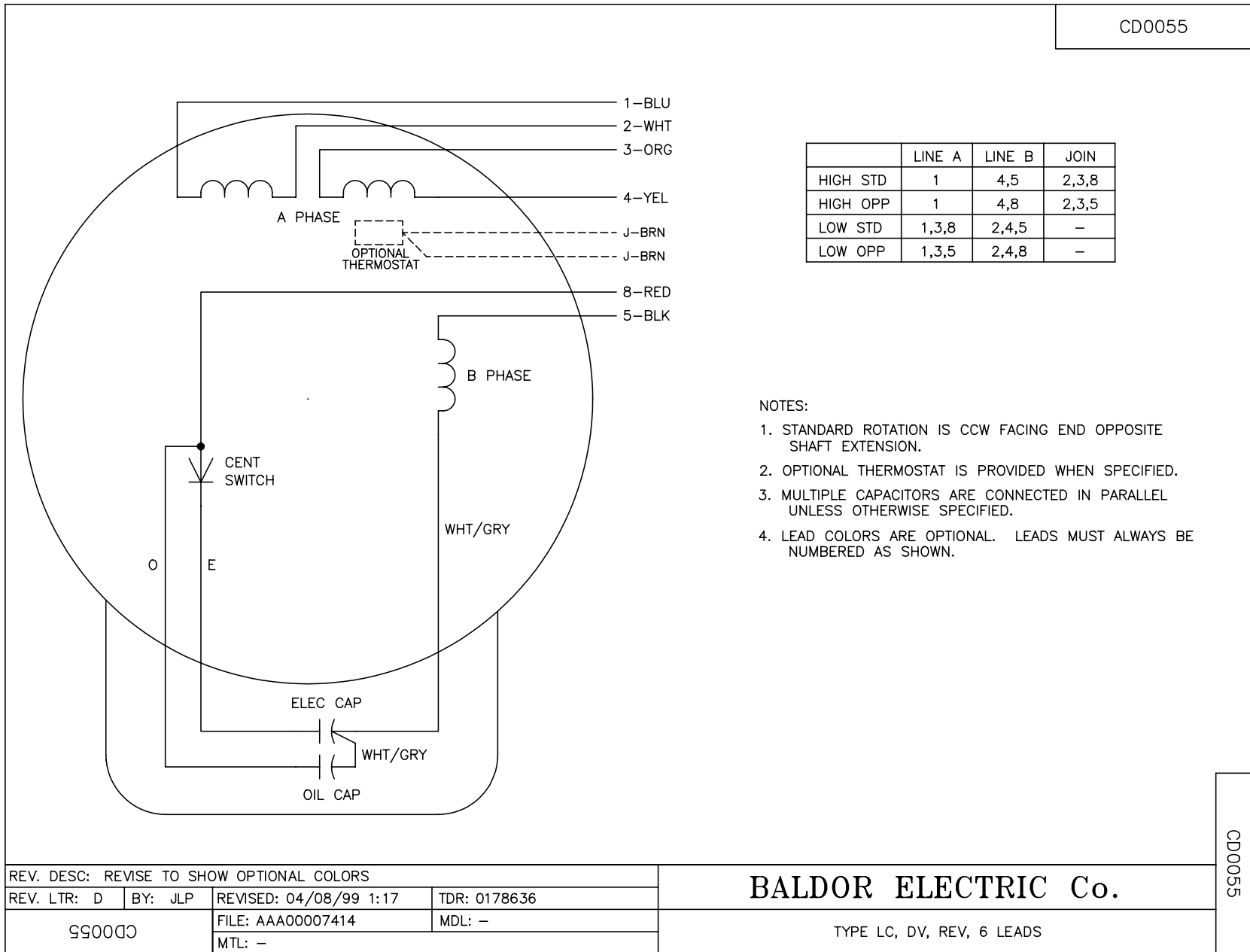
General Characteristics							
Full Load Torque:	4.5 LB-FT			Start Configuration:	DOL		
No-Load Current:	4.42 Amps			Break-Down Torque:	11.0 LB-FT		
Line-line Res. @ 25°C.:	0.812 Ohms A Ph / 1.04 Ohms B Ph			Pull-Up Torque:	7.2 LB-FT		
Temp. Rise @ Rated Load:	40 C			Locked-Rotor Torque:	10.0 LB-FT		
Temp. Rise @ S.F. Load:	51 C			Starting Current:	85.8 Amps		
Load Characteristics							
% of Rated Load	25	50	75	100	125	150	S.F.
Power Factor:	67.0	83.0	89.0	92.0	93.0	93.0	93.0
Efficiency:	62.1	74.3	77.4	76.6	73.4	68.4	74.7
Speed:	3564.0	3534.0	3500.0	3458.0	3405.0	3324.0	3426.0
Line Amperes:	5.47	7.62	10.3	13.6	17.7	23.0	16.1

Performance Graph at 230V, 60Hz, 3.0HP Typical performance - Not guaranteed values





CD0055



REV. DESC: REVISE TO SHOW OPTIONAL COLORS			
REV. LTR: D	BY: JLP	REVISED: 04/08/99 1:17	TDR: 0178636
990000		FILE: AAA00007414	MDL: -
CD0055		MTL: -	

BALDOR ELECTRIC Co.

TYPE LC, DV, REV, 6 LEADS

CD0055