

BALDOR® • RELIANCE

Product Information Packet

VL1408T

3HP,1725RPM,1PH,60HZ,184TC,3634LC,OPEN

Copyright © All product information within this document is subject to Baldor Electric Company copyright © protection, unless otherwise noted.

Part Detail							
Revision:	AE	Status:	PRD/A	Change #:		Proprietary:	No
Type:	AC	Prod. Type:	3634LC	Elec. Spec:	36WG2759	CD Diagram:	
Enclosure:	ODTF	Mfg Plant:		Mech. Spec:	36E001	Layout:	
Frame:	184TC	Mounting:	F1	Poles:	04	Created Date:	
Base:	N	Rotation:	R	Insulation:	B	Eff. Date:	02-24-2010
Leads:	4#14 A PH,3#16 B PH	Literature:		Elec. Diagram:		Replaced By:	

Nameplate NP1256L									
CAT.NO.	VL1408T								
SPEC.	36E01-2759								
HP	3								
VOLTS	115/230								
AMP	32/16								
RPM	1725								
FRAME	184TC	HZ	60	PH	1				
SER.F.	1.15	CODE	H	DES	L	CLASS	B		
NEMA-NOM-EFF	78	PF	78						
RATING	40C AMB-CONT								
CC				USABLE AT 208V	16.8				
DE	6206	ODE	6205						
ENCL	ODTF	SN							

Parts List		
Part Number	Description	Quantity
SA034415	SA 36E01-2759	1.000 EA
RA030443	RA 36E01-2759	1.000 EA
36CB3004	36 CB CASTING W/1.09 DIA LEAD HOLE @ 6:0	1.000 EA
51XB1016A08	10-16X 1/2HXWSSLD SERTYB	2.000 EA
11XW1032G06	10-32 X .38, TAPTITE II, HEX WSHR SLTD U	1.000 EA
HW3001B01	003SS CUP WASHER, FOR #8 SCREW	1.000 EA
36EP3200A03	SPL FR ENDPLATE -OPEN- FOR EXT FAN & DRI	1.000 EA
HW4500A01	1641B(ALEMITE)400 UNIV, GREASE FITT	1.000 EA
SP1008A01	BAFFLE, MODEL 36 & 37	1.000 EA
13XT0832A07	8-32X7/16 TYP 23 PAN HD SLT DX	2.000 EA
10XN2520A12	O1/4-20X 3/4 HEX HEAD CAP	2.000 EA
HW5100A05	WVY WSHR F/205 & 304 BRGS	1.000 EA
36EP3403A03	PU E.P., TC, OPEN, 206 BRG, LESS TIGHT S	1.000 EA
HW4500A01	1641B(ALEMITE)400 UNIV, GREASE FITT	1.000 EA
36AD2000	AIR BAFFLE	1.000 EA
60XW0632A06	6-32 X 3/8 TORX HEAD SCREW TAPTITE II	4.000 EA
10XN2520A28	1/4-20X 1 3/4 HEX HD	4.000 EA
HW1001A25	LOCKWASHER 1/4, ZINC PLT .493 OD, .255 I	4.000 EA
36FN3000A01SP	EXFN, PLASTIC, 7.00 OD, .912 ID	1.000 EA
51XB1214A16	12-14X1.00 HXWSSLD SERTYB	1.000 EA
36FH4012A01	DRIP COVER NOTCH BOTTOM, W/ AUTOPHERETIC	1.000 EA
51XW1032A06	10-32 X .38, TAPTITE II, HEX WSHR SLTD S	3.000 EA
36CB4516	36 LIPPED CB LID	1.000 EA
51XW0832A07	8-32 X .44, TAPTITE II, HEX WSHR SLTD SE	4.000 EA

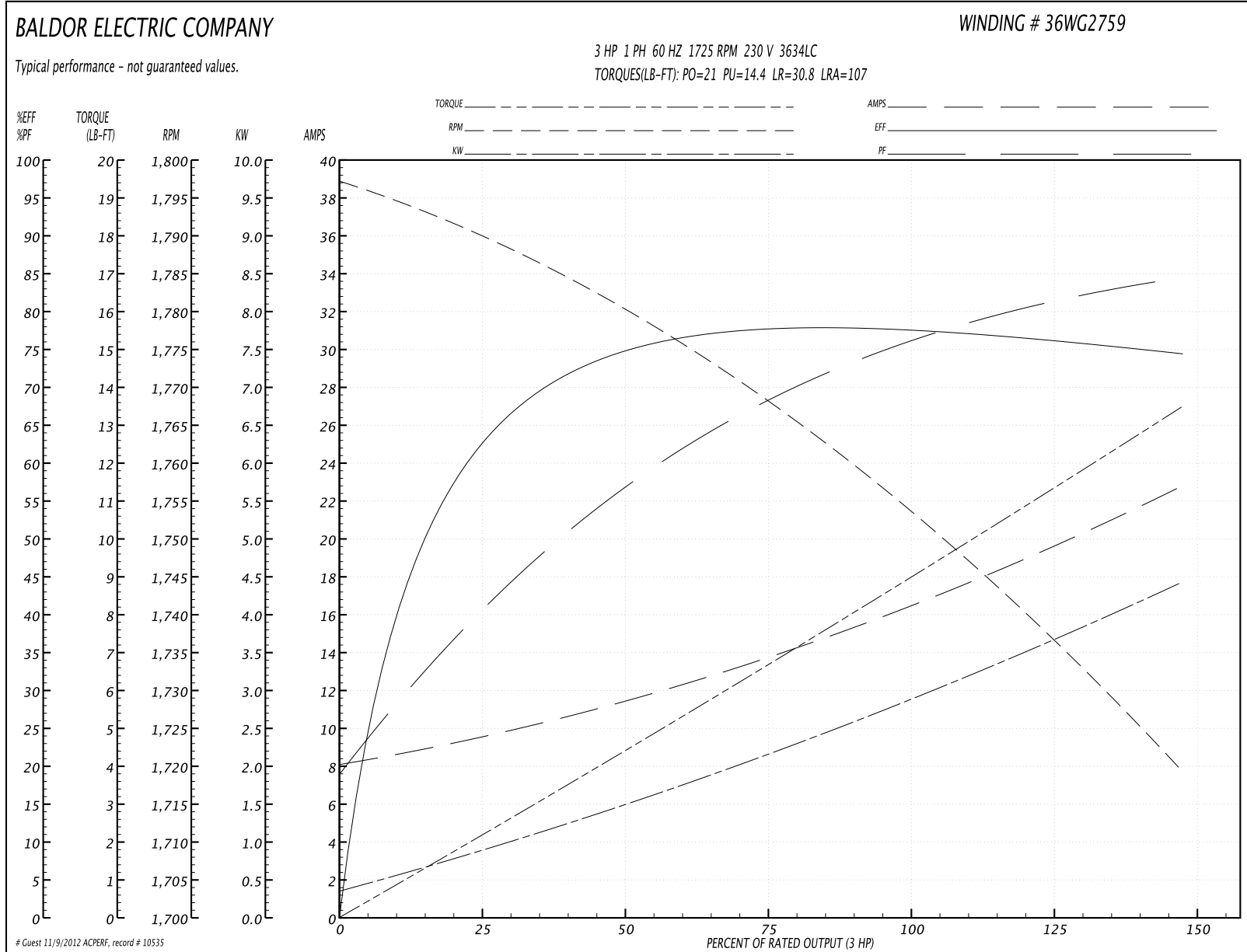
Parts List (continued)		
Part Number	Description	Quantity
HW2501E16	3KEY, 1/4 SQ X 1.750	1.000 EA
HA7000A02	KEY RETAINER RING, 1 1/8 DIA, 1 3/8 DIA	1.000 EA
85XU0407S04	4X1/4 U DRIVE PIN STAINLESS	2.000 EA
MJ1000A75	GREASE, POLYREX EM EXXON	0.050 LB
MG1000G27	PAINT- S9282E CHARCOAL GREY	0.022 GA
HA3101A25	THRUBOLT 1/4-20 X 11.000 OHIO ROD	4.000 EA
36CB5010A01	CAPACITOR BOX KIT, 36CB3800, OC3020F12	1.000 EA
SP5064A06	MODEL 36 TYPE LC STAT SWITCH LEAD ASSEMB	1.000 EA
LB1119	WARNING LABEL	1.000 EA
LB1125C01	STD (STOCK) CARTON LABEL BALDOR WITH FLA	1.000 EA
LC0016	CONNECTION LABEL	1.000 EA
NP1256L	ALUM UL CSA CC	1.000 EA
36PA1001	PACKAGING GROUP	1.000 EA
PK3082	STYROFOAM CRADLE	1.000 EA

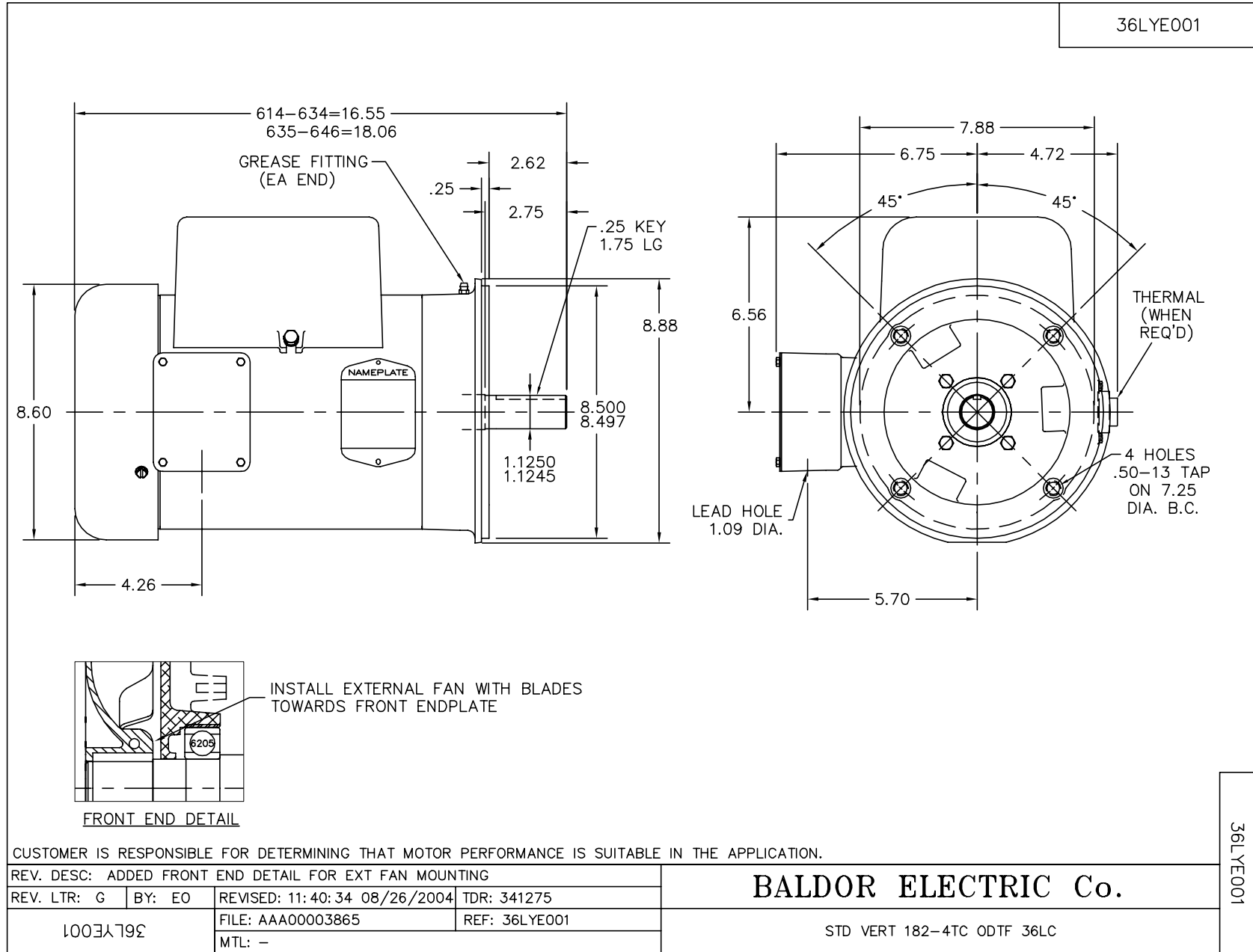
Performance Data at 230V, 60Hz, 3.0HP (Typical performance - Not guaranteed values)

General Characteristics			
Full Load Torque:	9.0 LB-FT	Start Configuration:	DOL
No-Load Current:	8.5 Amps	Break-Down Torque:	21.0 LB-FT
Line-line Res. @ 25°C.:	4.156 Ohms A Ph / 0.586 Ohms B Ph	Pull-Up Torque:	14.4 LB-FT
Temp. Rise @ Rated Load:	57 C	Locked-Rotor Torque:	30.8 LB-FT
Temp. Rise @ S.F. Load:	72 C	Starting Current:	107.0 Amps

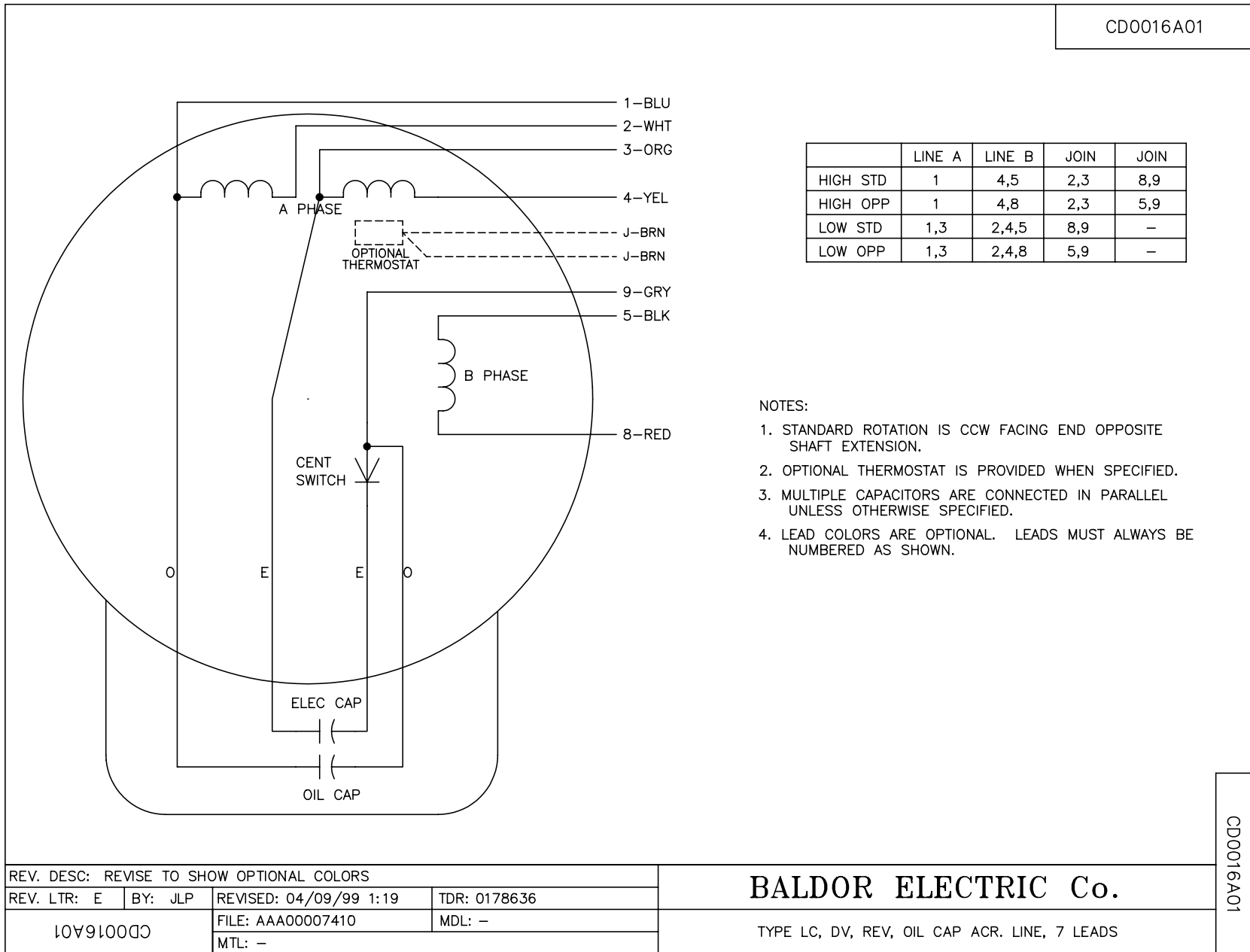
Load Characteristics							
% of Rated Load	25	50	75	100	125	150	S.F.
Power Factor:	45.0	64.0	73.0	79.0	85.0	83.0	83.0
Efficiency:	62.6	74.9	78.6	78.0	75.0	74.9	76.1
Speed:	1788.0	1780.0	1769.0	1756.0	1733.0	1721.0	1742.0
Line Amperes:	9.1	10.4	15.8	16.0	19.0	23.0	17.8

Performance Graph at 230V, 60Hz, 3.0HP Typical performance - Not guaranteed values





CD0016A01



REV. DESC: REVISE TO SHOW OPTIONAL COLORS			
REV. LTR: E	BY: JLP	REVISED: 04/09/99 1:19	TDR: 0178636
10V91000		FILE: AAA00007410	MDL: -
CD0016A01		MTL: -	

BALDOR ELECTRIC Co.

TYPE LC, DV, REV, OIL CAP ACR. LINE, 7 LEADS

CD0016A01