

BALDOR® • RELIANCE

Product Information Packet

VL3504

.5HP, 1725RPM, 1PH, 60HZ, 56C, 3421L, TEFC, F1

Copyright © All product information within this document is subject to Baldor Electric Company copyright © protection, unless otherwise noted.

| Part Detail | | | | | | | |
|-------------|------|-------------|-------|----------------|----------|---------------|------------|
| Revision: | AH | Status: | PRD/A | Change #: | | Proprietary: | No |
| Type: | AC | Prod. Type: | 3421L | Elec. Spec: | 34WG5422 | CD Diagram: | |
| Enclosure: | TEFC | Mfg Plant: | | Mech. Spec: | 34C063 | Layout: | |
| Frame: | 56C | Mounting: | F1 | Poles: | 04 | Created Date: | |
| Base: | N | Rotation: | R | Insulation: | B | Eff. Date: | 10-07-2011 |
| Leads: | 6#18 | Literature: | | Elec. Diagram: | | Replaced By: | |

| Nameplate NP1256L | | | | | | | | | |
|-------------------|--------------|------|------|----------------|-----|-------|---|--|--|
| CAT.NO. | VL3504 | | | | | | | | |
| SPEC. | 34C63-5422 | | | | | | | | |
| HP | .5 | | | | | | | | |
| VOLTS | 115/230 | | | | | | | | |
| AMP | 7.4/3.7 | | | | | | | | |
| RPM | 1725 | | | | | | | | |
| FRAME | 56C | HZ | 60 | PH | 1 | | | | |
| SER.F. | 1.25 | CODE | J | DES | N | CLASS | B | | |
| NEMA-NOM-EFF | 68 | PF | 66 | | | | | | |
| RATING | 40C AMB-CONT | | | | | | | | |
| CC | | | | USABLE AT 208V | 4.3 | | | | |
| DE | 6203 | ODE | 6203 | | | | | | |
| ENCL | TEFC | SN | | | | | | | |
| | SFA 8.2/4.1 | | | | | | | | |

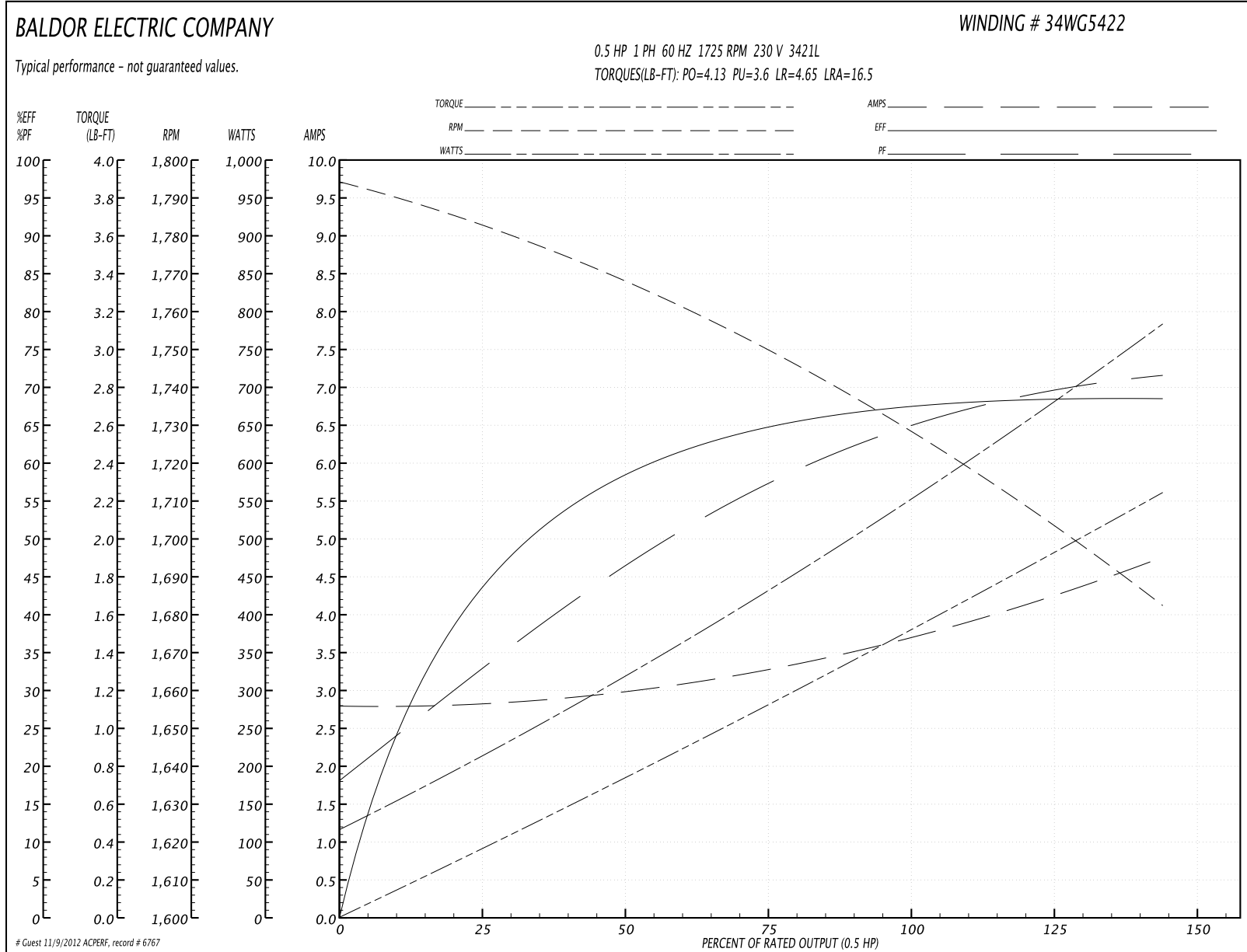
| Parts List | | |
|---------------|--|----------|
| Part Number | Description | Quantity |
| SA005677 | SA 34C63-5422 | 1.000 EA |
| RA002423 | RA 34C63-5422 | 1.000 EA |
| EC1270A02SP | ELEC CAP, 270-324 MFD, 125V, 1.48D X 3. | 1.000 EA |
| NS2512A01 | INSULATOR, CONDUIT BOX X | 1.000 EA |
| 34CB3002A | CB CAST W/.88 DIA HOLE | 1.000 EA |
| 34GS1029A01 | GASKET, CONDUIT BOX | 1.000 EA |
| 51XB1016A07 | 10-16 X 7/16 HXWSSLD SERTYB | 2.000 EA |
| 11XW1032G06 | 10-32 X .38, TAPTITE II, HEX WSHR SLTD U | 1.000 EA |
| 34EP3102A01SP | FR ENDPLATE, MACH | 1.000 EA |
| 51XW0832A07 | 8-32 X .44, TAPTITE II, HEX WSHR SLTD SE | 2.000 EA |
| NS2500A01 | INSULATOR, AUTO THER PROT | 1.000 EA |
| 34CB4800SP | CAPACITOR COVER, STAMPED | 1.000 EA |
| 34GS3000SP | GASKET, CAPACITOR BOX | 1.000 EA |
| 51XB1016A05 | 10-16X5/16HX WA SL SR TYB (F/S) | 2.000 EA |
| HW5100A03SP | WAVY WASHER (W1543-017) | 1.000 EA |
| 51XN1032A20 | 10-32 X 1 1/4 HX WS SL SR | 2.000 EA |
| 34FN3002A01SP | EXTERNAL FAN, PLASTIC, .637/.639 HUB W/ | 1.000 EA |
| 34FH4002A01 | IEC FH NO GREASER | 1.000 EA |
| 51XW1032A06 | 10-32 X .38, TAPTITE II, HEX WSHR SLTD S | 3.000 EA |
| 34CB4517 | CB LID 4 MTG HOLES .22 DIA STAMPED, FOR | 1.000 EA |
| 34GS1031A01 | GASKET, FLAT CONDUIT BOX LID (LEXIDE) | 1.000 EA |
| 51XW0832A07 | 8-32 X .44, TAPTITE II, HEX WSHR SLTD SE | 4.000 EA |
| HW2501D13SP | KEY, 3/16 SQ X 1.375 | 1.000 EA |
| HA7000A04 | KEY RETAINER 0.625 DIA SHAFTS | 1.000 EA |

| Parts List (continued) | | |
|------------------------|--|----------|
| Part Number | Description | Quantity |
| 34EP3300A24SP | PU ENDPLATE, MACH | 1.000 EA |
| MG1000G27 | PAINT- S9282E CHARCOAL GREY | 0.014 GA |
| 10XF0440S02 | 04-40 X 1/8 TYPE F HEX HD STAINLESS STIC | 2.000 EA |
| SP5056A24 | MODEL 34 TYPE L STATIONARY SWITCH WITH L | 1.000 EA |
| HA3100A44 | THRUBOLT 10-32 X 8.000 | 4.000 EA |
| LB1125C01 | STD (STOCK) CARTON LABEL BALDOR WITH FLA | 1.000 EA |
| LB5040 | INSTRUCTION TAG, AC & DC | 1.000 EA |
| LC0001A01 | CONN LABEL / WARNING LABEL (LC0001 / LB1 | 1.000 EA |
| NP1256L | ALUM UL CSA CC | 1.000 EA |
| 34PA1005 | PACKING GROUP, BALDOR | 1.000 EA |
| PK3082 | STYROFOAM CRADLE | 1.000 EA |
| PK3083T | STYROFOAM PACKING CRADLE W/TAPE | 1.000 EA |

Performance Data at 230V, 60Hz, 0.5HP (Typical performance - Not guaranteed values)

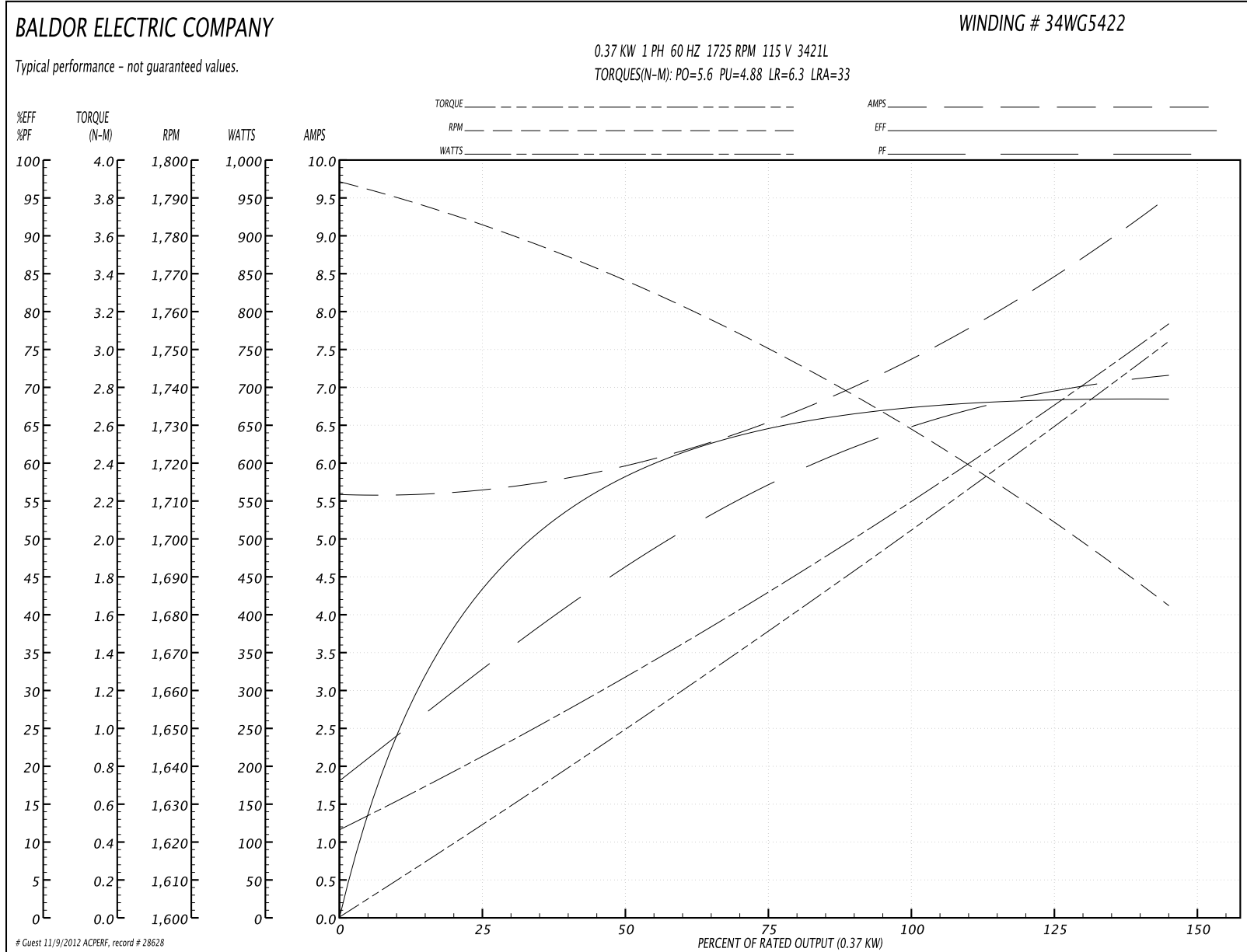
| General Characteristics | | | | | | | |
|--------------------------|---------------------------------|--------|--------|----------------------|------------|--------|--------|
| Full Load Torque: | 1.5 LB-FT | | | Start Configuration: | DOL | | |
| No-Load Current: | 2.8 Amps | | | Break-Down Torque: | 4.13 LB-FT | | |
| Line-line Res. @ 25°C.: | 4.44 Ohms A Ph / 3.19 Ohms B Ph | | | Pull-Up Torque: | 3.6 LB-FT | | |
| Temp. Rise @ Rated Load: | 63 C | | | Locked-Rotor Torque: | 4.65 LB-FT | | |
| Temp. Rise @ S.F. Load: | 77 C | | | Starting Current: | 16.5 Amps | | |
| Load Characteristics | | | | | | | |
| % of Rated Load | 25 | 50 | 75 | 100 | 125 | 150 | S.F. |
| Power Factor: | 32.0 | 46.0 | 59.0 | 66.0 | 72.0 | 80.0 | 72.0 |
| Efficiency: | 42.0 | 58.0 | 65.0 | 68.0 | 69.0 | 68.0 | 69.0 |
| Speed: | 1783.0 | 1765.0 | 1750.0 | 1730.0 | 1710.0 | 1680.0 | 1710.0 |
| Line Amperes: | 2.8 | 3.0 | 3.3 | 3.7 | 4.1 | 4.8 | 4.1 |

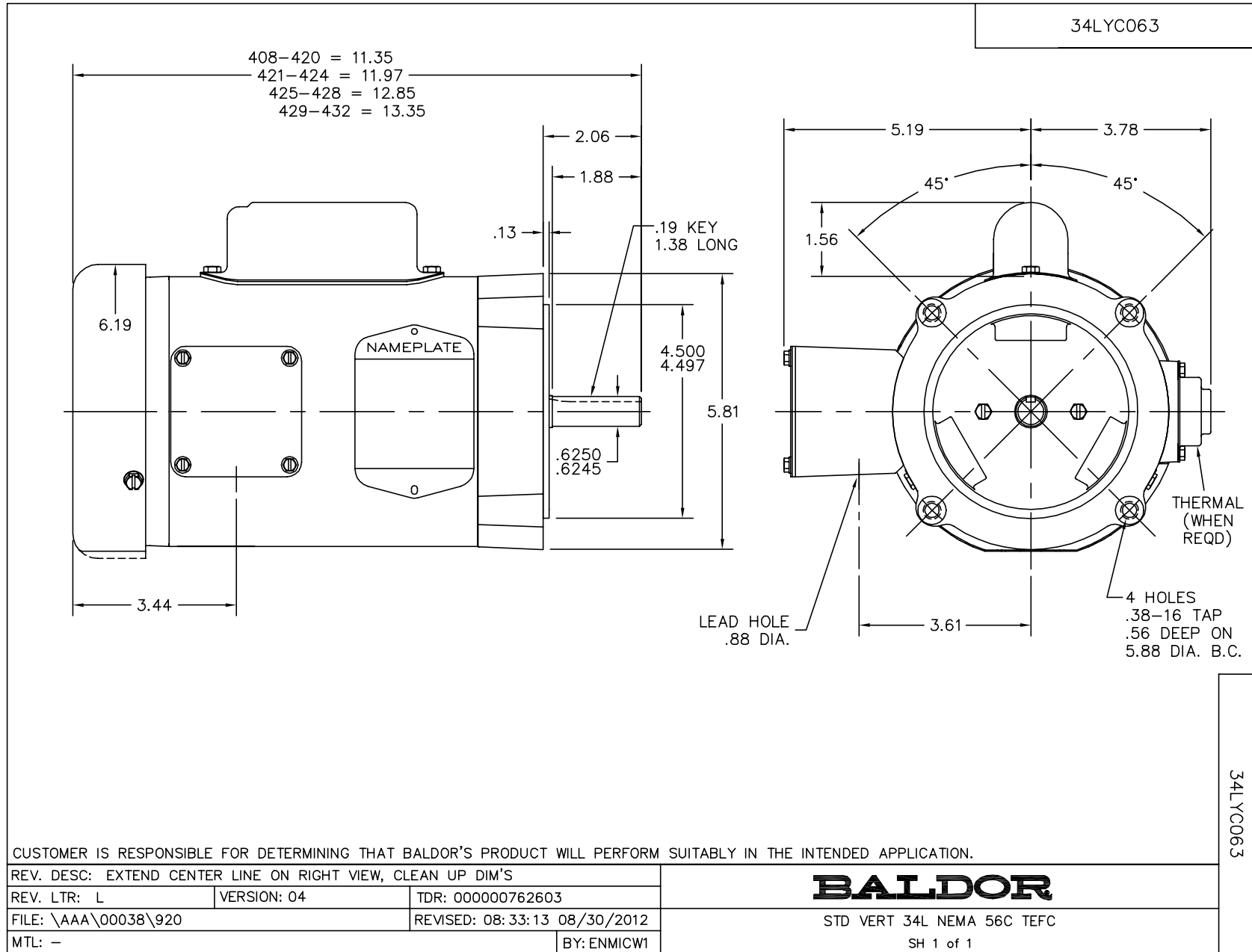
Performance Graph at 230V, 60Hz, 0.5HP Typical performance - Not guaranteed values



| Performance Data at 115V, 60Hz, 0.37KW (Typical performance - Not guaranteed values) | | | | | | | |
|--|---------------------------------|-----------|-----------|----------------------|------------|------------|-------------|
| General Characteristics | | | | | | | |
| Full Load Torque: | 2.03 N-M | | | Start Configuration: | DOL | | |
| No-Load Current: | 5.6 Amps | | | Break-Down Torque: | 5.6 N-M | | |
| Line-line Res. @ 25°C.: | 1.06 Ohms A Ph / 3.13 Ohms B Ph | | | Pull-Up Torque: | 4.88 N-M | | |
| Temp. Rise @ Rated Load: | 63 C | | | Locked-Rotor Torque: | 6.3 N-M | | |
| Temp. Rise @ S.F. Load: | 77 C | | | Starting Current: | 33.0 Amps | | |
| Load Characteristics | | | | | | | |
| % of Rated Load | 25 | 50 | 75 | 100 | 125 | 150 | S.F. |
| Power Factor: | 35.0 | 47.0 | 57.0 | 64.0 | 70.0 | 72.0 | 70.0 |
| Efficiency: | 41.9 | 58.2 | 64.8 | 67.9 | 68.9 | 67.9 | 68.9 |
| Speed: | 1783.0 | 1765.0 | 1750.0 | 1730.0 | 1710.0 | 1680.0 | 1710.0 |
| Line Amperes: | 5.6 | 6.0 | 6.6 | 7.4 | 8.2 | 9.6 | 8.2 |

Performance Graph at 115V, 60Hz, 0.37KW Typical performance - Not guaranteed values





CD0001



| | LINE A | LINE B | JOIN |
|----------|--------|--------|-------|
| HIGH STD | 1 | 4,5 | 2,3,8 |
| HIGH OPP | 1 | 4,8 | 2,3,5 |
| LOW STD | 1,3,8 | 2,4,5 | - |
| LOW OPP | 1,3,5 | 2,4,8 | - |

NOTES:

1. STANDARD ROTATION IS CCW FACING END OPPOSITE SHAFT EXTENSION.
2. OPTIONAL THERMOSTAT IS PROVIDED WHEN SPECIFIED.
3. MULTIPLE CAPACITORS ARE CONNECTED IN PARALLEL UNLESS OTHERWISE SPECIFIED.
4. LEAD COLORS ARE OPTIONAL. LEADS MUST ALWAYS BE NUMBERED AS SHOWN.

| | | | |
|---|---------|------------------------|--------------|
| REV. DESC: REVISE TO SHOW OPTIONAL COLORS | | | |
| REV. LTR: D | BY: JLP | REVISED: 04/08/99 1:16 | TDR: 0178636 |
| 100000 | | FILE: AAA00007405 | MDL: - |
| | | MTL: - | |

BALDOR ELECTRIC Co.

TYPE L, DV, REV, 6 LEADS

CD0001