

BALDOR® • RELIANCE

Product Information Packet

VL3506A

.75HP, 3450RPM, 1PH, 60HZ, 56C, 3424L, TEFC, F1

Copyright © All product information within this document is subject to Baldor Electric Company copyright © protection, unless otherwise noted.

Part Detail									
Revision:	D	Status:	PRD/A	Change #:		Proprietary:	No		
Type:	AC	Prod. Type:	3424L	Elec. Spec:	34WG3514	CD Diagram:			
Enclosure:	TEFC	Mfg Plant:		Mech. Spec:	34K043	Layout:			
Frame:	56C	Mounting:	F1	Poles:	02	Created Date:	01-13-2006		
Base:	N	Rotation:	R	Insulation:	B	Eff. Date:	10-07-2011		
Leads:	6#18,1#14 #4TH	Literature:		Elec. Diagram:		Replaced By:			
Nameplate NP1257L									
CAT.NO.	VL3506A								
SPEC.	34K043-3514								
HP	.75								
VOLTS	115/230								
AMP	9.6/4.8								
RPM	3450								
FRAME	56C	HZ	60			PH	1		
SER.F.	1.25	CODE	K			DES	N	CL	B
NEMA-NOM-EFF	66	PF	74						
RATING	40C AMB-CONT								
CC				USABLE AT 208V					
DE	6203	ODE	6203						
ENCL	TEFC	SN							
	SFA 11.4/5.7								

Parts List		
Part Number	Description	Quantity
SA137507	SA 34K043-3514	1.000 EA
RA127113	RA 34K043-3514	1.000 EA
EC1400A03SP	ELEC CAP, 400-480 MFD, 125V, 1.81D X 3.	1.000 EA
NS2512A01	INSULATOR, CONDUIT BOX X	1.000 EA
34CB3002A	CB CAST W/.88 DIA HOLE	1.000 EA
34GS1029A01	GASKET, CONDUIT BOX	1.000 EA
51XB1016A07	10-16 X 7/16 HXWSSLD SERTYB	2.000 EA
11XW1032G06	10-32 X .38, TAPTITE II, HEX WSHR SLTD U	1.000 EA
34EP3102A01SP	FR ENDPLATE, MACH	1.000 EA
51XW0832A07	8-32 X .44, TAPTITE II, HEX WSHR SLTD SE	2.000 EA
NS2501A01	INSULATOR, CAPACITOR	1.000 EA
51XB1016A05	10-16X5/16HX WA SL SR TYB (F/S)	2.000 EA
HW5100A03SP	WAVY WASHER (W1543-017)	1.000 EA
34EP3300A24SP	PU ENDPLATE, MACH	1.000 EA
51XN1032A20	10-32 X 1 1/4 HX WS SL SR	2.000 EA
34FN3002A01SP	EXTERNAL FAN, PLASTIC, .637/.639 HUB W/	1.000 EA
34FH4002A01	IEC FH NO GREASER	1.000 EA
51XW1032A06	10-32 X .38, TAPTITE II, HEX WSHR SLTD S	3.000 EA
34CB4517	CB LID 4 MTG HOLES .22 DIA STAMPED, FOR	1.000 EA
34GS1031A01	GASKET, FLAT CONDUIT BOX LID (LEXIDE)	1.000 EA
51XW0832A07	8-32 X .44, TAPTITE II, HEX WSHR SLTD SE	4.000 EA
HW2501D13SP	KEY, 3/16 SQ X 1.375	1.000 EA
HA7000A04	KEY RETAINER 0.625 DIA SHAFTS	1.000 EA
MG1000G27	PAINT- S9282E CHARCOAL GREY	0.014 GA

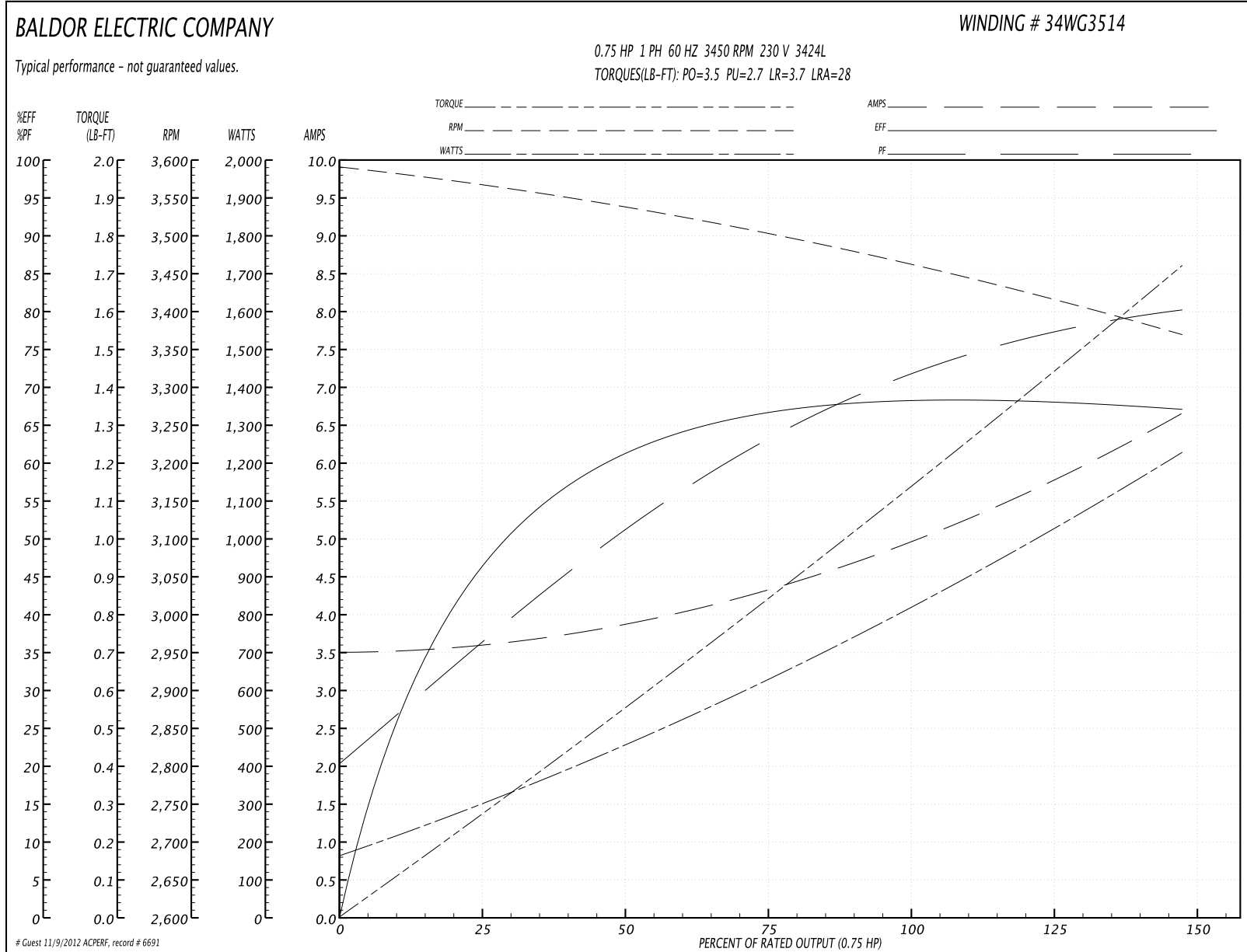
Parts List (continued)		
Part Number	Description	Quantity
10XF0440S02	04-40 X 1/8 TYPE F HEX HD STAINLESS STIC	2.000 EA
33CB4800A02	CAPACITOR COVER, STAMPED	1.000 EA
35GS3001A02	GASKET, CA.COVER, 5.38 LONG .06 CS301	1.000 EA
SP5056A24	MODEL 34 TYPE L STATIONARY SWITCH WITH L	1.000 EA
HA3100A44	THRUBOLT 10-32 X 8.000	4.000 EA
LB1118	LABEL,WARNING (ROLL LABEL)	1.000 EA
LB1125C01	STD (STOCK) CARTON LABEL BALDOR WITH FLA	1.000 EA
LC0008	1PH,DV,7-LEAD,THERMAL,CONNECTION DIAGRAM	1.000 EA
NP1257L	ALUM UL CSA CC THERMAL REV MTG	1.000 EA
34PA1002	PACKING GROUP, BALDOR	1.000 EA
LB5040	INSTRUCTION TAG, AC & DC	1.000 EA
PK3083T	STYROFOAM PACKING CRADLE W/TAPE	1.000 EA

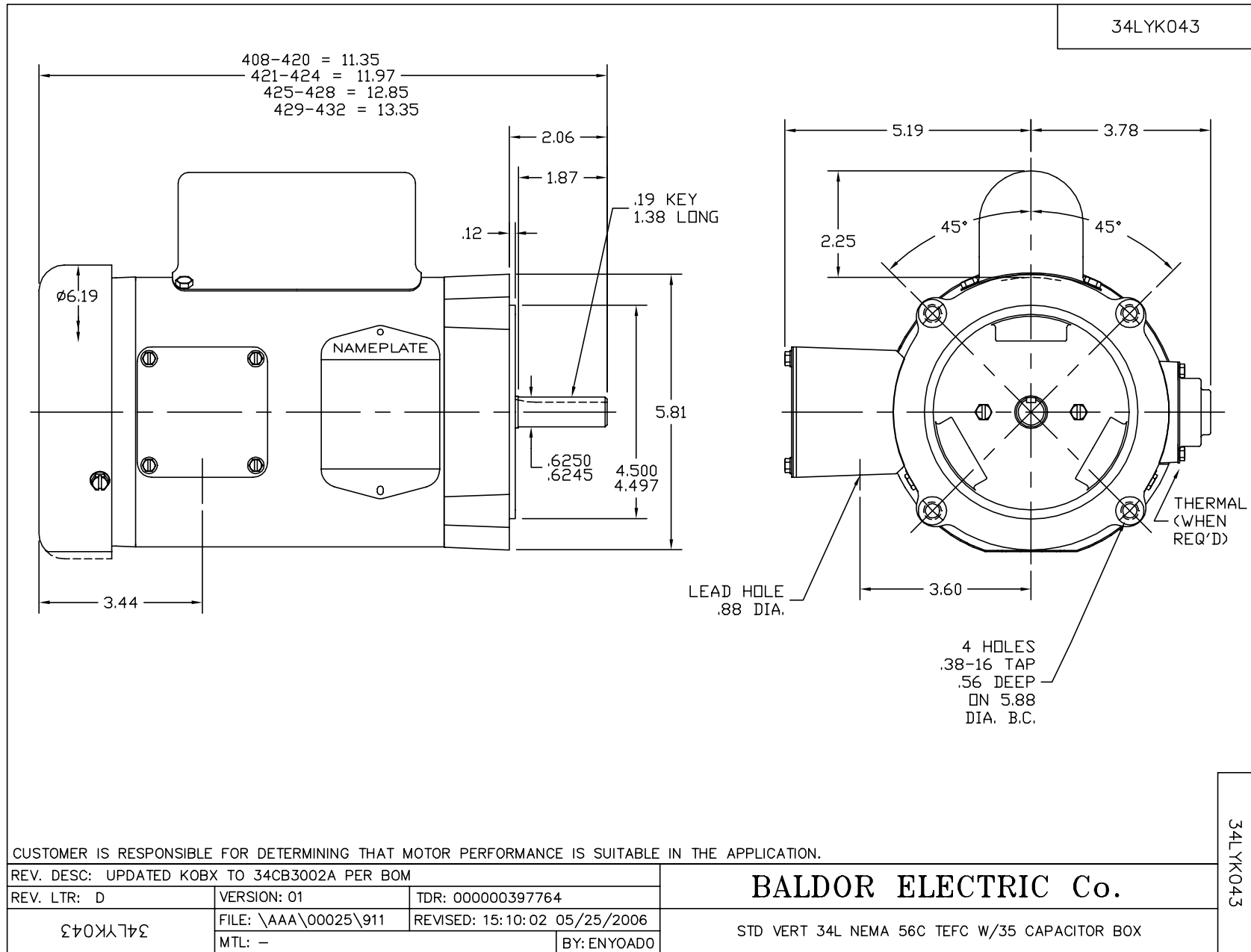
Performance Data at 230V, 60Hz, 0.75HP (Typical performance - Not guaranteed values)

General Characteristics			
Full Load Torque:	1.15 LB-FT	Start Configuration:	DOL
No-Load Current:	3.5 Amps	Break-Down Torque:	3.5 LB-FT
Line-line Res. @ 25°C.:	2.5 Ohms A Ph / 2.5 Ohms B Ph	Pull-Up Torque:	2.7 LB-FT
Temp. Rise @ Rated Load:	78 C	Locked-Rotor Torque:	3.7 LB-FT
Temp. Rise @ S.F. Load:	92 C	Starting Current:	28.0 Amps

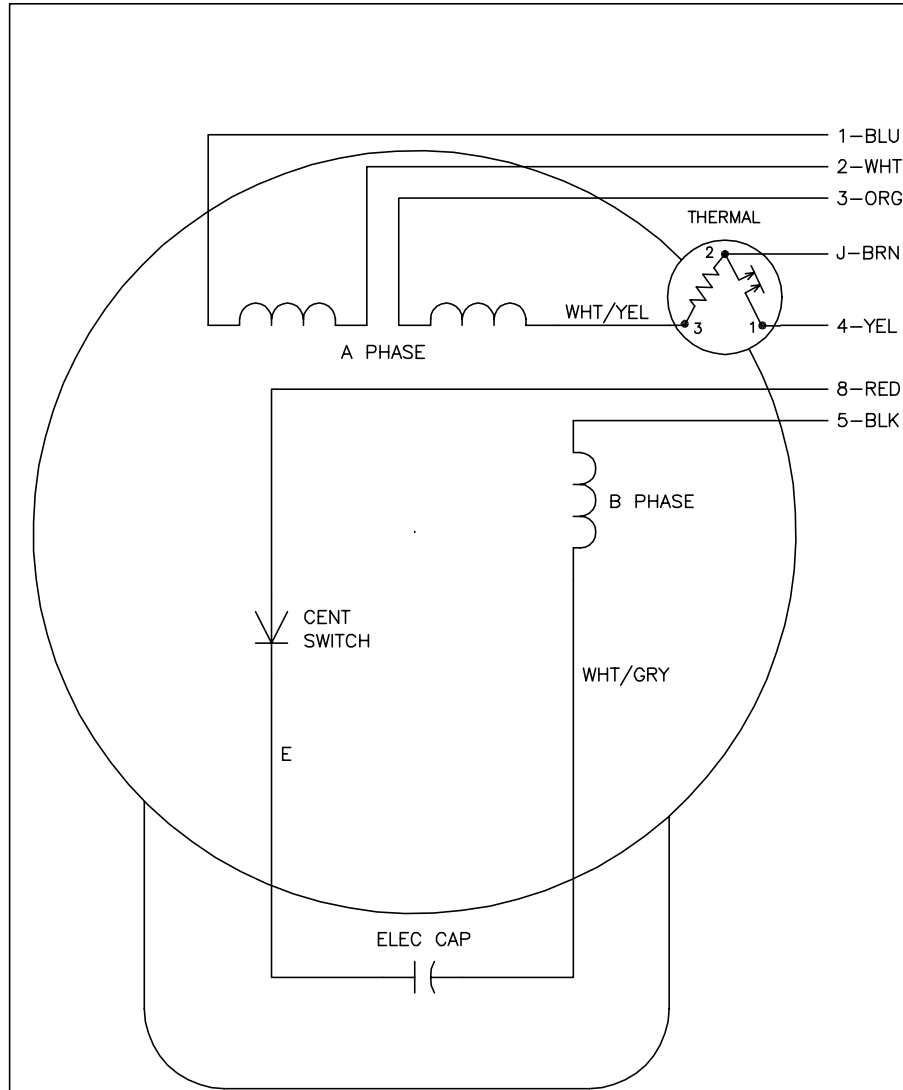
Load Characteristics							
% of Rated Load	25	50	75	100	125	150	S.F.
Power Factor:	36.0	51.0	62.0	70.0	76.0	81.0	76.0
Efficiency:	47.2	61.1	66.5	68.7	68.7	66.7	68.7
Speed:	3561.0	3534.0	3500.0	3464.0	3421.0	3365.0	3421.0
Line Amperes:	3.6	3.9	4.4	5.0	5.7	6.7	5.7

Performance Graph at 230V, 60Hz, 0.75HP Typical performance - Not guaranteed values





CD0008



	LINE A	LINE B	JOIN	JOIN
HIGH STD	1	4	2,3,8	J,5
HIGH OPP	1	4	2,3,5	J,8
LOW STD	1,3,8	4	-	2,J,5
LOW OPP	1,3,5	4	-	2,J,8

NOTES:

1. STANDARD ROTATION IS CCW FACING END OPPOSITE SHAFT EXTENSION.
2. MULTIPLE CAPACITORS ARE CONNECTED IN PARALLEL UNLESS OTHERWISE SPECIFIED.
3. LEAD COLORS ARE OPTIONAL. LEADS MUST ALWAYS BE NUMBERED AS SHOWN.

REV. DESC: REMOVE 2-TERMINAL THERMAL DETAIL, SEE CD0008A02			
REV. LTR: F	VERSION: 01	TDR: 000000360649	
80000D	FILE: \AAA\00007\408	REVISED: 10:56:54 04/18/2005	
	MTL: -	BY: ENJOEPO	

BALDOR ELECTRIC Co.

TYPE L, DV, REV, THERMAL, 7 LEADS

CD0008