

BALDOR® • ***RELIANCE***

Product Information Packet

VM3542-57

.56KW,1425RPM,3PH,50HZ,56C,3428M,TEFC,F1

Copyright © All product information within this document is subject to Baldor Electric Company copyright © protection, unless otherwise noted.

| Part Detail | | | | | | | | | |
|-------------------|---------------|-------------|-------|----------------|----------|---------------|------------|----|---|
| Revision: | B | Status: | PRD/A | Change #: | | Proprietary: | No | | |
| Type: | AC | Prod. Type: | 3428M | Elec. Spec: | 34WG3996 | CD Diagram: | | | |
| Enclosure: | TEFC | Mfg Plant: | | Mech. Spec: | 34A063 | Layout: | | | |
| Frame: | 56C | Mounting: | F1 | Poles: | 04 | Created Date: | 09-08-2011 | | |
| Base: | N | Rotation: | R | Insulation: | F | Eff. Date: | 08-10-2012 | | |
| Leads: | 6#18 | Literature: | | Elec. Diagram: | | Replaced By: | | | |
| Nameplate NP1372L | | | | | | | | | |
| CAT.NO. | VM3542-57 | | | | | | | | |
| SPEC. | 34A063-3996G2 | | | | | | | | |
| HP | .75 | | | | | | | | |
| VOLTS | 230/400 | | | | | | | | |
| AMP | 3.1/1.8 | | | | | | | | |
| RPM | 1425 | | | | | | | | |
| FRAME | 56C | HZ | | | 50 | PH | 3 | | |
| SER.F. | 1.25 | CODE | | | L | DES | B | CL | F |
| NEMA-NOM-EFF | 75.5 | PF | | | 59 | | | | |
| RATING | 40C AMB-CONT | | | | | | | | |
| CC | | | | USABLE AT 208V | | | | | |
| DE | 6203 | ODE | | | 6203 | | | | |
| ENCL | TEFC | SN | | | | | | | |
| | SFA 3.5/2 | | | | | | | | |

| Parts List | | |
|---------------|--|----------|
| Part Number | Description | Quantity |
| SA230332 | SA 34A063-3996G2 | 1.000 EA |
| RA217362 | RA 34A063-3996G2 | 1.000 EA |
| NS2512A01 | INSULATOR, CONDUIT BOX X | 1.000 EA |
| 34CB3002A | CB CAST W/.88 DIA HOLE | 1.000 EA |
| 34GS1029A01 | GASKET, CONDUIT BOX | 1.000 EA |
| 51XB1016A07 | 10-16 X 7/16 HXWSSLD SERTYB | 2.000 EA |
| 11XW1032G06 | 10-32 X .38, TAPTITE II, HEX WSHR SLTD U | 1.000 EA |
| 34EP3102A01SP | FR ENDPLATE, MACH | 1.000 EA |
| HW5100A03SP | WAVY WASHER (W1543-017) | 1.000 EA |
| 34EP3300A24SP | PU ENDPLATE, MACH | 1.000 EA |
| 51XN1032A20 | 10-32 X 1 1/4 HX WS SL SR | 2.000 EA |
| 34FN3002A01SP | EXTERNAL FAN, PLASTIC, .637/.639 HUB W/ | 1.000 EA |
| 51XW1032A06 | 10-32 X .38, TAPTITE II, HEX WSHR SLTD S | 3.000 EA |
| 34CB4517 | CB LID 4 MTG HOLES .22 DIA STAMPED, FOR | 1.000 EA |
| 34GS1031A01 | GASKET, FLAT CONDUIT BOX LID (LEXIDE) | 1.000 EA |
| 51XW0832A07 | 8-32 X .44, TAPTITE II, HEX WSHR SLTD SE | 4.000 EA |
| HW2501D13SP | KEY, 3/16 SQ X 1.375 | 1.000 EA |
| 34FH4002A01 | IEC FH NO GREASER | 1.000 EA |
| HA7000A04 | KEY RETAINER 0.625 DIA SHAFTS | 1.000 EA |
| MG1000G27 | PAINT- S9282E CHARCOAL GREY | 0.014 GA |
| 10XF0440S02 | 04-40 X 1/8 TYPE F HEX HD STAINLESS STIC | 2.000 EA |
| HA4067A01 | PUSH IN DRAIN FITTING (BLACK) | 1.000 EA |
| HA4067A01 | PUSH IN DRAIN FITTING (BLACK) | 1.000 EA |
| HA3100A45 | THRUBOLT 10-32 X 8.875 | 4.000 EA |

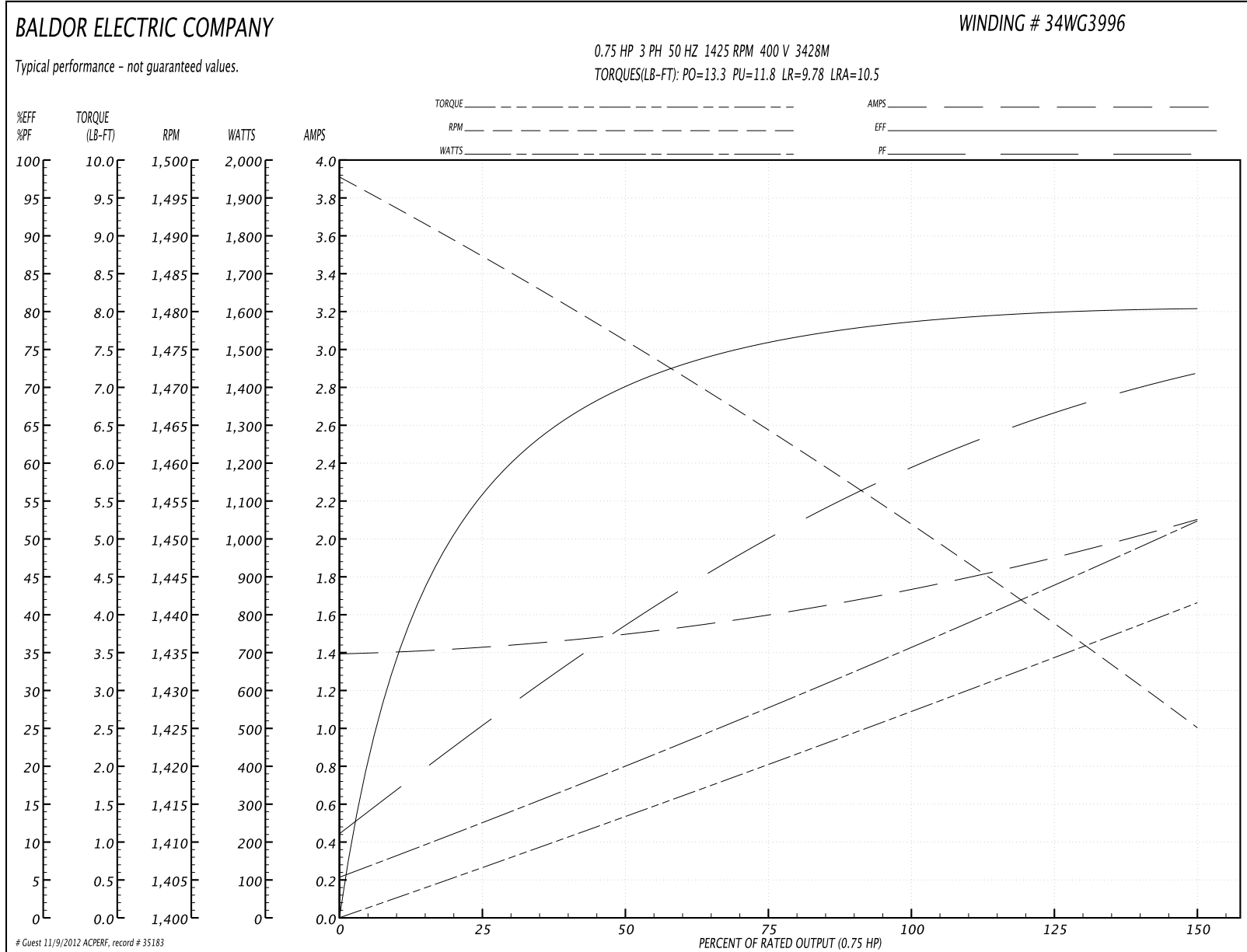
| Parts List (continued) | | |
|------------------------|--|----------|
| Part Number | Description | Quantity |
| LB1119 | WARNING LABEL | 1.000 EA |
| LC0034 | CONNECTION LABEL | 1.000 EA |
| LB1125C01 | STD (STOCK) CARTON LABEL BALDOR WITH FLA | 1.000 EA |
| NP1372L | ALUM UL CSA CE CC | 1.000 EA |
| 34PA1002 | PACKING GROUP, BALDOR | 1.000 EA |
| PK3083T | STYROFOAM PACKING CRADLE W/TAPE | 1.000 EA |

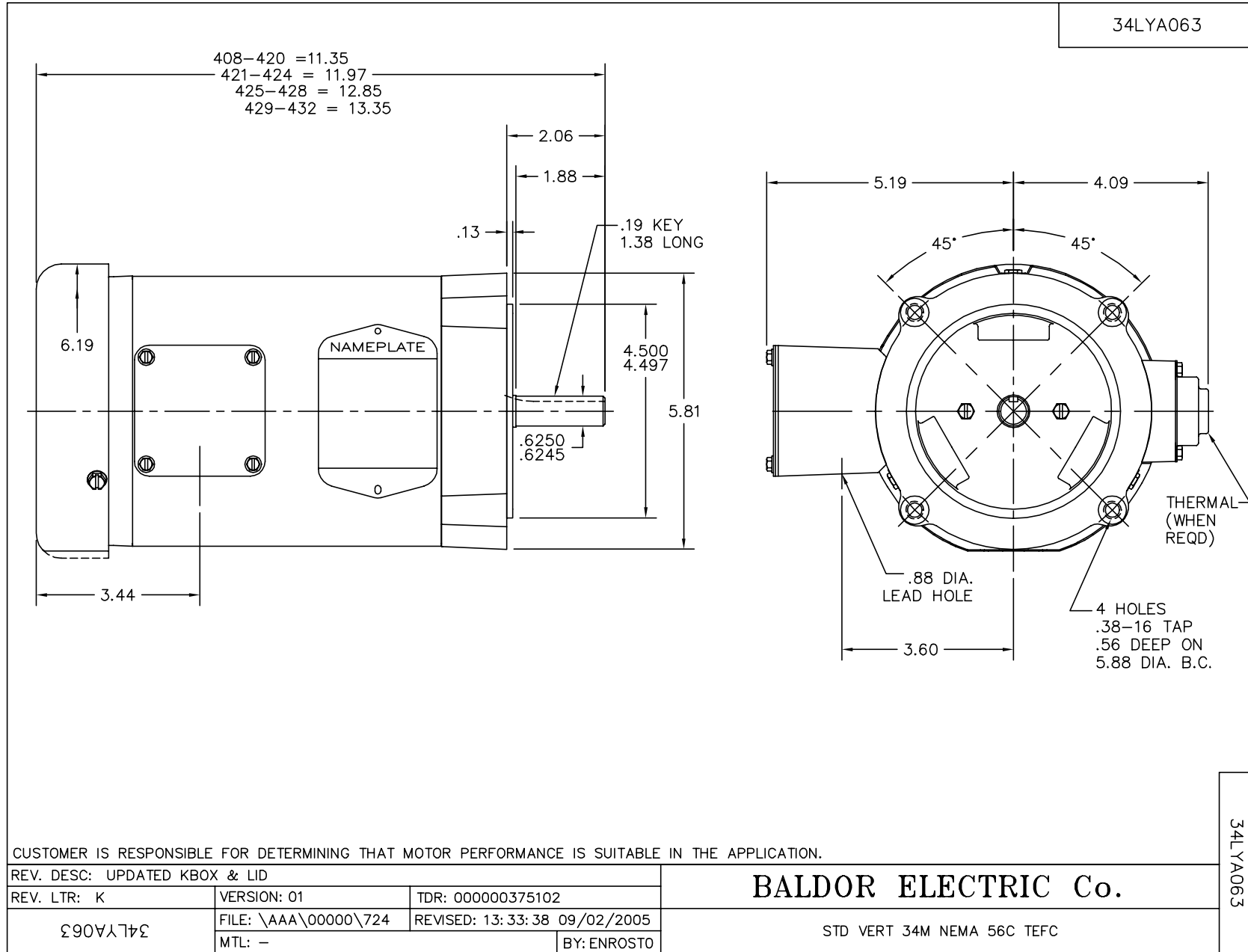
Performance Data at 400V, 50Hz, 0.75HP (Typical performance - Not guaranteed values)

| General Characteristics | | | |
|--------------------------|--------------------------------|----------------------|------------|
| Full Load Torque: | 2.71 LB-FT | Start Configuration: | DOL |
| No-Load Current: | 1.4 Amps | Break-Down Torque: | 13.3 LB-FT |
| Line-line Res. @ 25°C.: | 12.8 Ohms A Ph / 0.0 Ohms B Ph | Pull-Up Torque: | 11.8 LB-FT |
| Temp. Rise @ Rated Load: | | Locked-Rotor Torque: | 9.78 LB-FT |
| Temp. Rise @ S.F. Load: | | Starting Current: | 10.5 Amps |

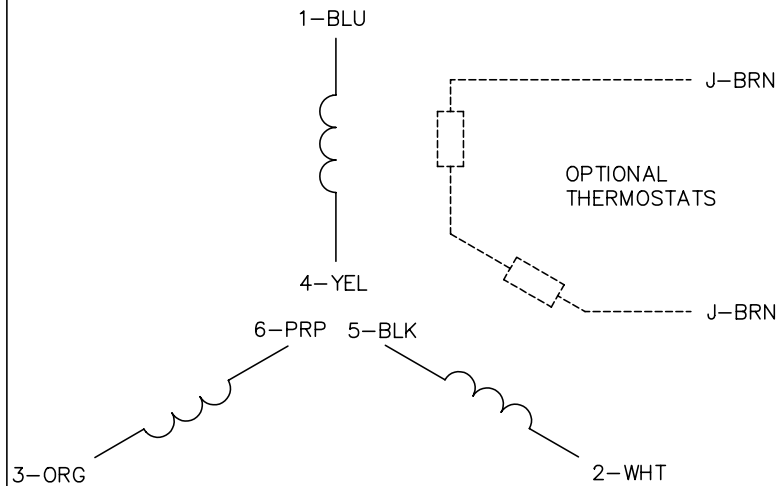
| Load Characteristics | | | | | | | |
|----------------------|--------|--------|--------|--------|--------|--------|--------|
| % of Rated Load | 25 | 50 | 75 | 100 | 125 | 150 | S.F. |
| Power Factor: | 26.0 | 39.0 | 50.0 | 59.0 | 67.0 | 72.0 | 67.0 |
| Efficiency: | 55.9 | 69.9 | 76.0 | 78.5 | 80.1 | 80.4 | 80.1 |
| Speed: | 1487.0 | 1476.0 | 1465.0 | 1452.0 | 1439.0 | 1425.0 | 1439.0 |
| Line Amperes: | 1.42 | 1.49 | 1.6 | 1.74 | 1.9 | 2.1 | 1.9 |

Performance Graph at 400V, 50Hz, 0.75HP Typical performance - Not guaranteed values

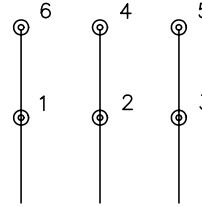




CD0022

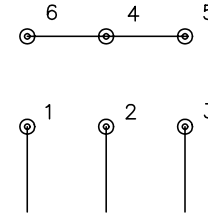


LOW VOLTAGE
(1D)



LINE

HIGH VOLTAGE
(1Y)



LINE

NOTES:

1. INTERCHANGE ANY TWO LINE LEADS TO REVERSE ROTATION.
2. OPTIONAL THERMOSTATS ARE PROVIDED WHEN SPECIFIED.
3. ACTUAL NUMBER OF INTERNAL PARALLEL CIRCUITS MAY BE A MULTIPLE OF THOSE SHOWN ABOVE.
4. LEAD COLORS ARE OPTIONAL. LEADS MUST ALWAYS BE NUMBERED AS SHOWN.

REV. DESC: REVISE TO SHOW OPTIONAL COLORS

REV. LTR: F

BY: JLP

REVISED: 01/21/99 3:54

TDR: 0171435

CD0022

FILE: AAA00005144

MDL: -

MTL: -

BALDOR ELECTRIC Co.

3PH, DV, 6 LEADS, DELTA/WYE CONNECTION

CD0022