

# **BALDOR**® • *RELIANCE*

## **Product Information Packet**

# **VRBM3538**

**.5HP, 1725RPM, 3PH, 60HZ, 56C, BRAKE, 3420M**

Copyright © All product information within this document is subject to Baldor Electric Company copyright © protection, unless otherwise noted.

Part Detail							
Revision:	J	Status:	PRD/A	Change #:		Proprietary:	No
Type:	AC	Prod. Type:	3420M	Elec. Spec:	34WG0097	CD Diagram:	
Enclosure:	TENV	Mfg Plant:		Mech. Spec:	34K208	Layout:	
Frame:	56C	Mounting:	F1	Poles:	04	Created Date:	
Base:	N	Rotation:	R	Insulation:	F	Eff. Date:	05-29-2012
Leads:	9#18	Literature:		Elec. Diagram:		Replaced By:	

Nameplate NP1893							
CAT.NO.	VRBM3538						
SPEC.	34K208-0097G1						
HP	.5						
VOLTS	208-230/460						
AMPS	1.9-1.8/9						
RPM	1725						
FRAME	56C	HZ	60	PH	3		
SER.F.	1.15	CODE	K	DES	B	CL	F
FL EFF	75.5	PF	69				
RATING	40C AMB-CONT						
CC		USABLE AT 208V	1.9				
DE	6203	ODE	6203				
ENCL	TENV	SER.					

Parts List		
Part Number	Description	Quantity
SA126788	SA 34K208-0097G1	1.000 EA
RA117076	RA 34K208-0097G1	1.000 EA
NS2512A01	INSULATOR, CONDUIT BOX X	1.000 EA
34CB3002A	CB CAST W/.88 DIA HOLE	1.000 EA
34GS1029A01	GASKET, CONDUIT BOX	1.000 EA
51XB1016A07	10-16 X 7/16 HXWSSLD SERTYB	2.000 EA
11XW1032G06	10-32 X .38, TAPTITE II, HEX WSHR SLTD U	1.000 EA
34EP3900T59	FR ENDPLATE, MACH	1.000 EA
HW5100A03SP	WAVY WASHER (W1543-017)	1.000 EA
34EP3300A24SP	PU ENDPLATE, MACH	1.000 EA
51XN1032A20	10-32 X 1 1/4 HX WS SL SR	2.000 EA
34CB4517	CB LID 4 MTG HOLES .22 DIA STAMPED, FOR	1.000 EA
34GS1031A01	GASKET, FLAT CONDUIT BOX LID (LEXIDE)	1.000 EA
51XW0832A07	8-32 X .44, TAPTITE II, HEX WSHR SLTD SE	4.000 EA
84XN2520J44	1/4-20 X 2 3/4 SOC HD CAP SCREW	4.000 EA
HW2501D01	KEY, 3/16 SQ X 0.438	1.000 EA
HW2501D13SP	KEY, 3/16 SQ X 1.375	1.000 EA
HA7000A04	KEY RETAINER 0.625 DIA SHAFTS	1.000 EA
MG1000G27	PAINT- S9282E CHARCOAL GREY	0.014 GA
33BK0047	STEARNS 3-21-84AF0-0B-WG, .625 BORE, 3 L	1.000 EA
34SF2110V01	VER EXTRUDED STATOR 34F TENV, MACH FOR K	1.000 EA
HA3100A44	THRUBOLT 10-32 X 8.000	4.000 EA
LB1172A01	CUSTOM MTR CARTON LABEL LASER PRINTER	1.000 EA
LB1119	WARNING LABEL	1.000 EA

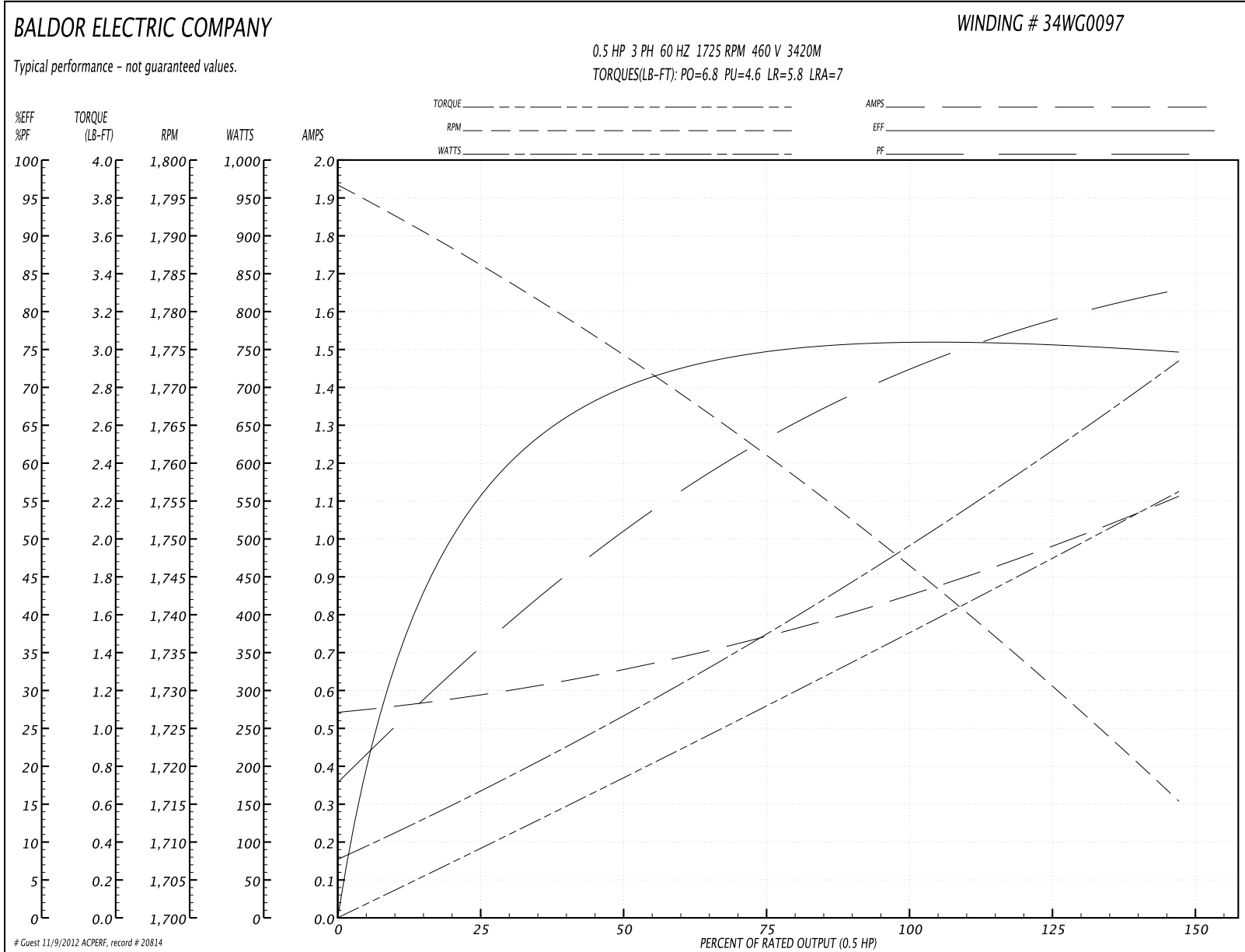
Parts List (continued)		
Part Number	Description	Quantity
LC0005F02	3PH,DV,REV,9 LEAD MTR W/STEARNS 320 BRK	1.000 EA
NP1893	NP W/O THRM, UL, CSA, CC, SELF-ADHESIVE	1.000 EA
27PA1001	PACKAGING GROUP	1.000 EA
LB5040	INSTRUCTION TAG, AC & DC	1.000 EA
PK3083T	STYROFOAM PACKING CRADLE W/TAPE	1.000 EA

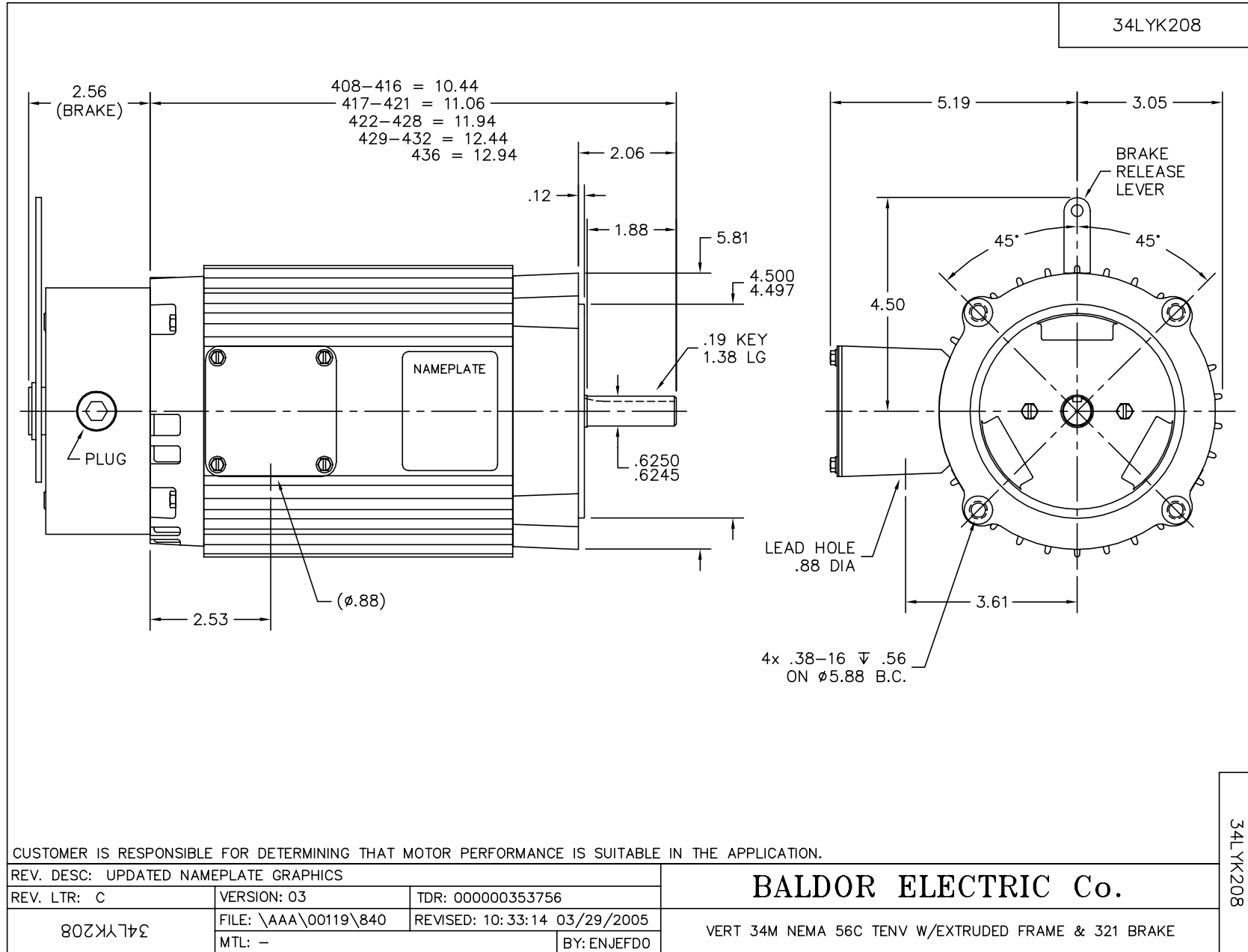
**Performance Data at 460V, 60Hz, 0.5HP (Typical performance - Not guaranteed values)**

General Characteristics			
Full Load Torque:	1.5 LB-FT	Start Configuration:	DOL
No-Load Current:	0.54 Amps	Break-Down Torque:	6.8 LB-FT
Line-line Res. @ 25°C.:	27.56 Ohms A Ph / 0.0 Ohms B Ph	Pull-Up Torque:	4.6 LB-FT
Temp. Rise @ Rated Load:		Locked-Rotor Torque:	5.8 LB-FT
Temp. Rise @ S.F. Load:		Starting Current:	7.0 Amps

Load Characteristics							
% of Rated Load	25	50	75	100	125	150	S.F.
Power Factor:	38.0	53.0	65.0	71.0	75.0	81.0	75.0
Efficiency:	55.0	69.0	74.0	78.0	75.5	74.4	75.5
Speed:	1787.0	1774.0	1760.0	1749.0	1728.0	1717.0	1728.0
Line Amperes:	0.6	0.65	0.74	0.84	1.0	1.1	1.0

Performance Graph at 460V, 60Hz, 0.5HP Typical performance - Not guaranteed values





CD0005

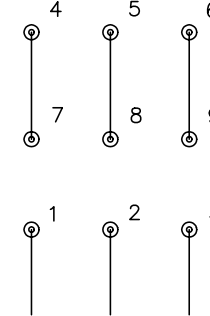


LOW VOLTAGE  
(2Y)



LINE

HIGH VOLTAGE  
(1Y)



LINE

NOTES:

1. INTERCHANGE ANY TWO LINE LEADS TO REVERSE ROTATION.
2. OPTIONAL THERMOSTATS ARE PROVIDED WHEN SPECIFIED.
3. ACTUAL NUMBER OF INTERNAL PARALLEL CIRCUITS MAY BE A MULTIPLE OF THOSE SHOWN ABOVE.
4. LEAD COLORS ARE OPTIONAL. LEADS MUST ALWAYS BE NUMBERED AS SHOWN.

REV. DESC: REVISE TO SHOW OPTIONAL COLORS			
REV. LTR: E	BY: JLP	REVISED: 01/19/99 10:15	TDR: 0171435
90000		FILE: AAA00005140	MDL: -
		MTL: -	

**BALDOR ELECTRIC Co.**

3PH, DV, 9 LEADS

CD0005