

# **BALDOR**® • ***RELIANCE***

## **Product Information Packet**

# **VRBM3542**

**.75HP, 1725RPM, 3PH, 60HZ, 56C, BRAKE, 3428M**

Copyright © All product information within this document is subject to Baldor Electric Company copyright © protection, unless otherwise noted.

Part Detail							
Revision:	K	Status:	PRD/A	Change #:		Proprietary:	No
Type:	AC	Prod. Type:	3428M	Elec. Spec:	34WG3820	CD Diagram:	
Enclosure:	TENV	Mfg Plant:		Mech. Spec:	34K208	Layout:	
Frame:	56C	Mounting:	F1	Poles:	04	Created Date:	
Base:	N	Rotation:	R	Insulation:	F	Eff. Date:	05-29-2012
Leads:	9#18	Literature:		Elec. Diagram:		Replaced By:	

Nameplate NP1893							
CAT.NO.	VRBM3542						
SPEC.	34K208-3820G1						
HP	.75						
VOLTS	208-230/460						
AMPS	2.9-2.6/1.3						
RPM	1725						
FRAME	56C	HZ	60	PH	3		
SER.F.	1.15	CODE	L	DES	B	CL	F
FL EFF	75	PF	71				
RATING	40C AMB-CONT						
CC		USABLE AT 208V	2.9				
DE	6203	ODE	6203				
ENCL	TENV	SER.					

Parts List		
Part Number	Description	Quantity
SA120160	SA 34K208-3820G1	1.000 EA
RA110884	RA 34K208-3820G1	1.000 EA
NS2512A01	INSULATOR, CONDUIT BOX X	1.000 EA
34CB3002A	CB CAST W/.88 DIA HOLE	1.000 EA
34GS1029A01	GASKET, CONDUIT BOX	1.000 EA
51XB1016A07	10-16 X 7/16 HXWSSLD SERTYB	2.000 EA
11XW1032G06	10-32 X .38, TAPTITE II, HEX WSHR SLTD U	1.000 EA
34EP3900T59	FR ENDPLATE, MACH	1.000 EA
HW5100A03SP	WAVY WASHER (W1543-017)	1.000 EA
34EP3300A24SP	PU ENDPLATE, MACH	1.000 EA
51XN1032A20	10-32 X 1 1/4 HX WS SL SR	2.000 EA
34CB4517	CB LID 4 MTG HOLES .22 DIA STAMPED, FOR	1.000 EA
34GS1031A01	GASKET, FLAT CONDUIT BOX LID (LEXIDE)	1.000 EA
51XW0832A07	8-32 X .44, TAPTITE II, HEX WSHR SLTD SE	4.000 EA
84XN2520J44	1/4-20 X 2 3/4 SOC HD CAP SCREW	4.000 EA
HW2501D01	KEY, 3/16 SQ X 0.438	1.000 EA
HW2501D13SP	KEY, 3/16 SQ X 1.375	1.000 EA
HA7000A04	KEY RETAINER 0.625 DIA SHAFTS	1.000 EA
MG1000G27	PAINT- S9282E CHARCOAL GREY	0.014 GA
34SF2110U01	VER EXTRUDED STATOR 34F TENV, MACH FOR K	1.000 EA
HA3100A45	THRUBOLT 10-32 X 8.875	4.000 EA
33BK0043	STEARNS 3-21-85AF0-OB-WG, .625 BORE, 72L	1.000 EA
LB1119	WARNING LABEL	1.000 EA
LB1125C01	STD (STOCK) CARTON LABEL BALDOR WITH FLA	1.000 EA

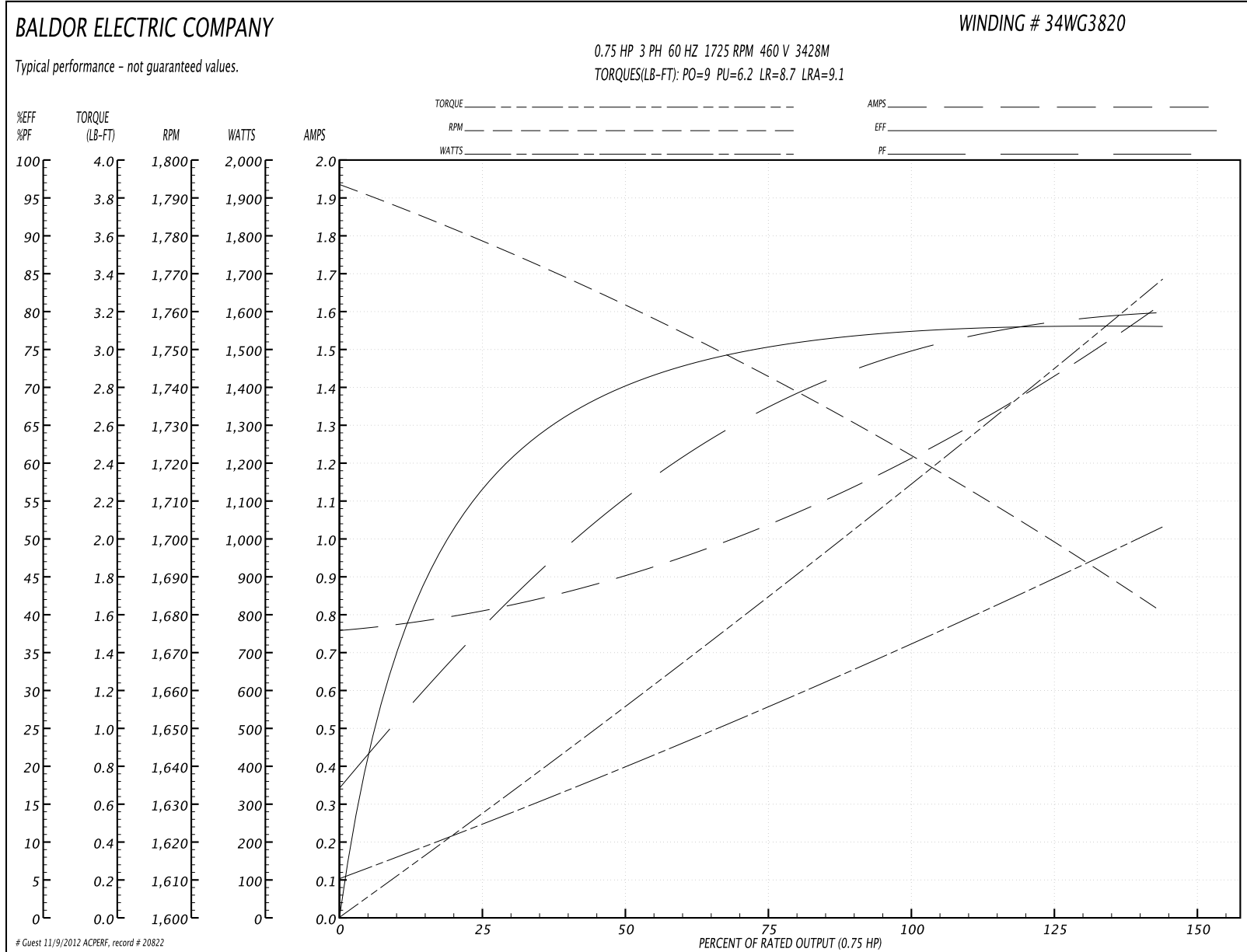
Parts List (continued)		
Part Number	Description	Quantity
LC0005F02	3PH,DV,REV,9 LEAD MTR W/STEARNS 320 BRK	1.000 EA
NP1893	NP W/O THRM, UL, CSA, CC, SELF-ADHESIVE	1.000 EA
27PA1001	PACKAGING GROUP	1.000 EA
LB5040	INSTRUCTION TAG, AC & DC	1.000 EA
PK3083T	STYROFOAM PACKING CRADLE W/TAPE	1.000 EA

**Performance Data at 460V, 60Hz, 0.75HP (Typical performance - Not guaranteed values)**

General Characteristics			
Full Load Torque:	2.25 LB-FT	Start Configuration:	DOL
No-Load Current:	0.76 Amps	Break-Down Torque:	9.0 LB-FT
Line-line Res. @ 25°C.:	18.9 Ohms A Ph / 0.0 Ohms B Ph	Pull-Up Torque:	6.2 LB-FT
Temp. Rise @ Rated Load:	70 C	Locked-Rotor Torque:	8.7 LB-FT
Temp. Rise @ S.F. Load:		Starting Current:	9.1 Amps

Load Characteristics							
% of Rated Load	25	50	75	100	125	150	S.F.
Power Factor:	38.0	55.0	67.0	75.0	80.0	83.0	0.0
Efficiency:	57.0	70.0	75.0	77.7	78.0	78.0	0.0
Speed:	1778.0	1761.0	1743.0	1724.0	1703.0	1680.0	0.0
Line Amperes:	0.81	0.9	1.04	1.2	1.4	1.62	0.0

Performance Graph at 460V, 60Hz, 0.75HP Typical performance - Not guaranteed values

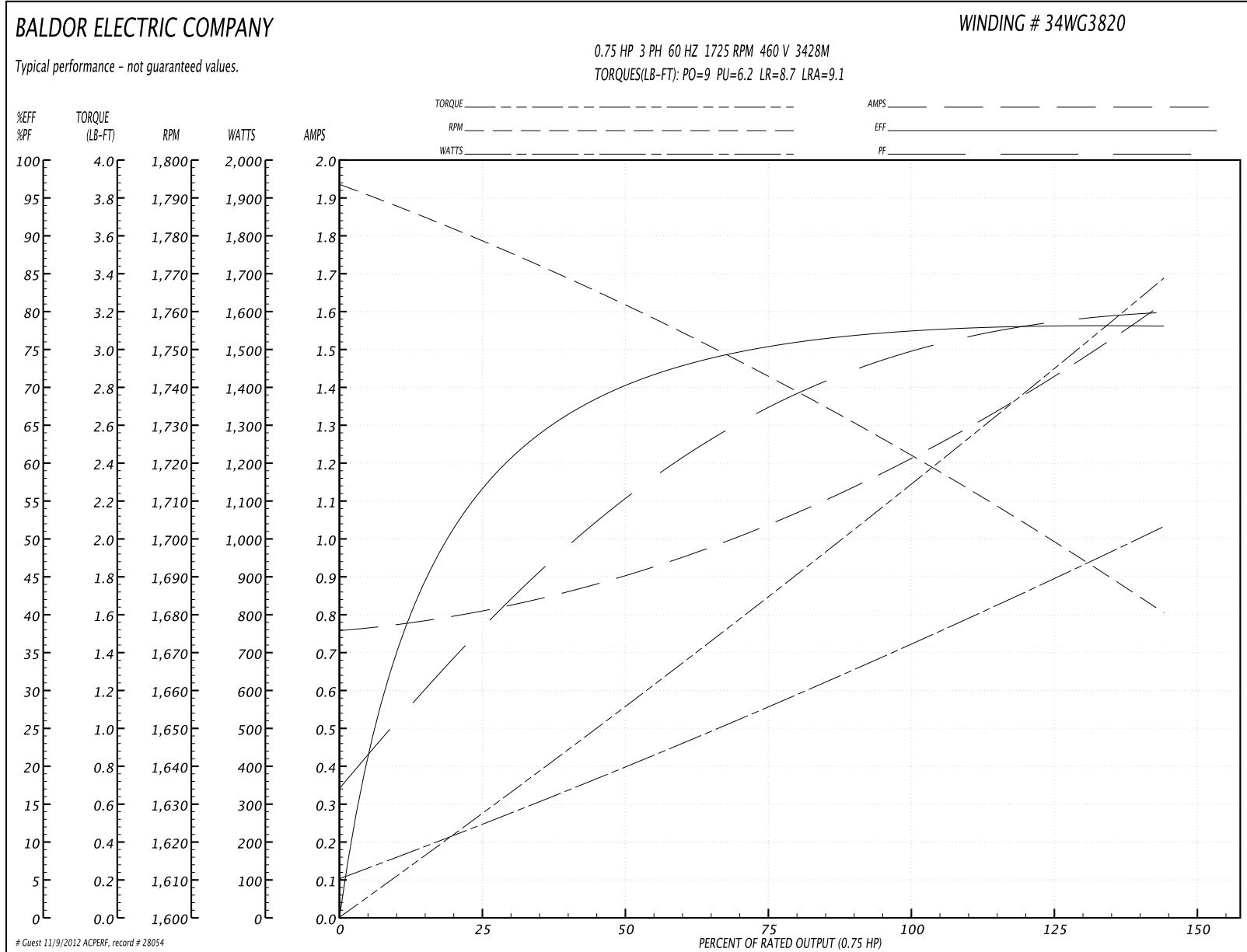


**Performance Data at 460V, 60Hz, 0.75HP (Typical performance - Not guaranteed values)**

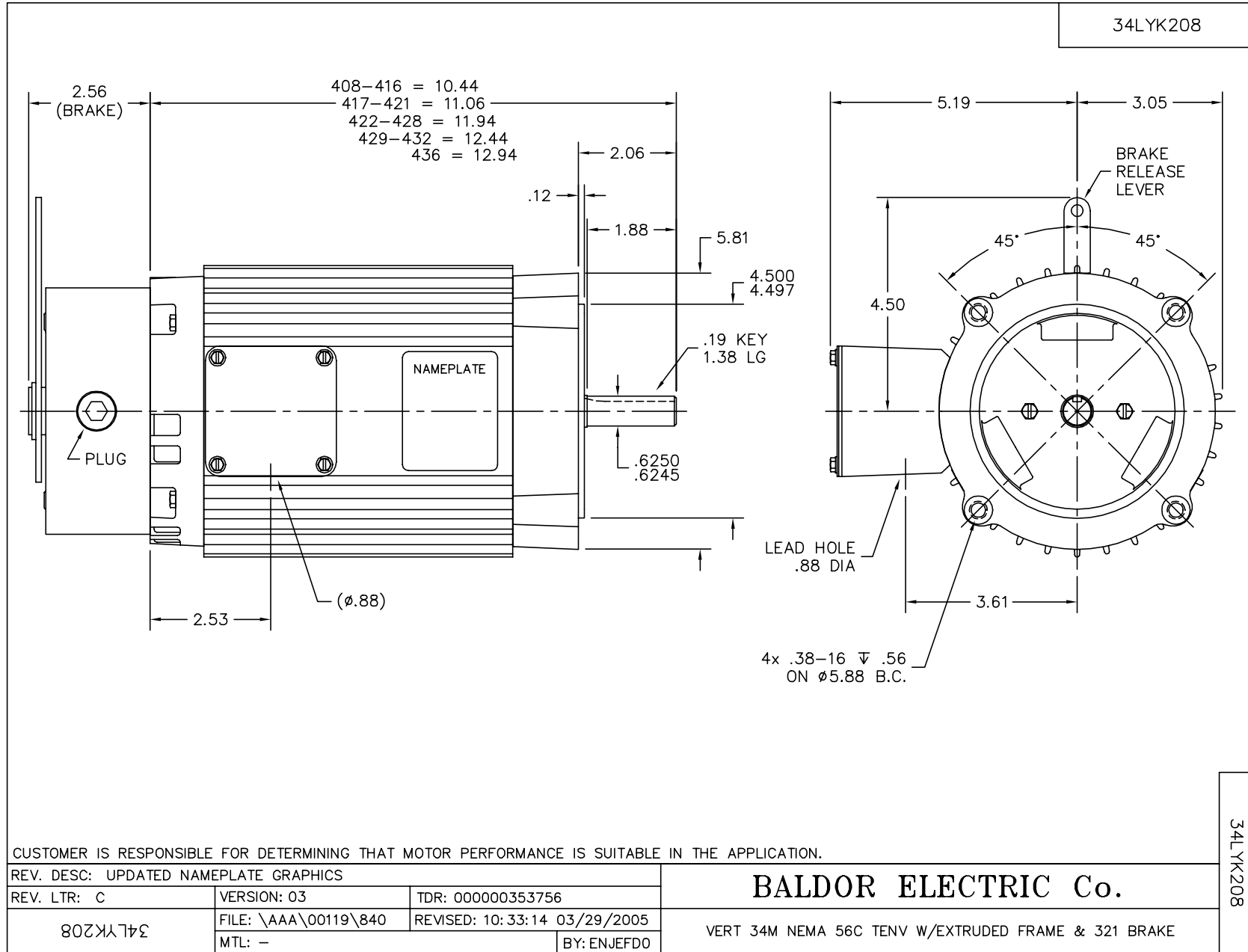
General Characteristics			
Full Load Torque:	2.25 LB-FT	Start Configuration:	DOL
No-Load Current:	0.76 Amps	Break-Down Torque:	9.0 LB-FT
Line-line Res. @ 25°C.:	18.9 Ohms A Ph / 0.0 Ohms B Ph	Pull-Up Torque:	6.2 LB-FT
Temp. Rise @ Rated Load:	70 C	Locked-Rotor Torque:	8.7 LB-FT
Temp. Rise @ S.F. Load:	80 C	Starting Current:	9.1 Amps

Load Characteristics							
% of Rated Load	25	50	75	100	125	150	S.F.
Power Factor:	39.0	56.0	67.0	74.0	78.0	80.0	76.0
Efficiency:	57.1	70.3	75.1	77.7	78.0	78.1	77.9
Speed:	1778.0	1761.0	1743.0	1724.0	1703.0	1680.0	1711.0
Line Amperes:	0.81	0.9	1.04	1.2	1.4	1.62	1.32

Performance Graph at 460V, 60Hz, 0.75HP Typical performance - Not guaranteed values



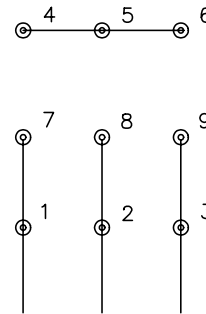




CD0005

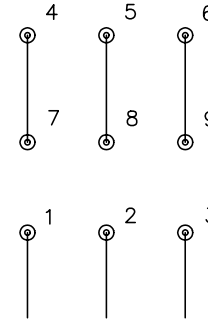


LOW VOLTAGE  
(2Y)



LINE

HIGH VOLTAGE  
(1Y)



LINE

NOTES:

1. INTERCHANGE ANY TWO LINE LEADS TO REVERSE ROTATION.
2. OPTIONAL THERMOSTATS ARE PROVIDED WHEN SPECIFIED.
3. ACTUAL NUMBER OF INTERNAL PARALLEL CIRCUITS MAY BE A MULTIPLE OF THOSE SHOWN ABOVE.
4. LEAD COLORS ARE OPTIONAL. LEADS MUST ALWAYS BE NUMBERED AS SHOWN.

REV. DESC: REVISE TO SHOW OPTIONAL COLORS			
REV. LTR: E	BY: JLP	REVISED: 01/19/99 10:15	TDR: 0171435
90000		FILE: AAA00005140	MDL: -
		MTL: -	

**BALDOR ELECTRIC Co.**

3PH, DV, 9 LEADS

CD0005