

# **BALDOR® • RELIANCE**

## **Product Information Packet**

### **WCL1511T**

**10HP,3450RPM,1PH,60HZ,215TCZ,3740L,OPEN**

Copyright © All product information within this document is subject to Baldor Electric Company copyright © protection, unless otherwise noted.

Part Detail							
Revision:	AD	Status:	PRD/A	Change #:		Proprietary:	No
Type:	AC	Prod. Type:	3740L	Elec. Spec:	37WGX047	CD Diagram:	
Enclosure:	OPEN	Mfg Plant:		Mech. Spec:	37E284	Layout:	
Frame:	215TCZ	Mounting:	F1	Poles:	02	Created Date:	
Base:	RG	Rotation:	R	Insulation:	F	Eff. Date:	11-23-2009
Leads:	2#8 A PH,2#14 B PH	Literature:		Elec. Diagram:		Replaced By:	

Nameplate NP1256L									
CAT.NO.	WCL1511T								
SPEC.	37E284X47								
HP	10								
VOLTS	230								
AMP	46								
RPM	3450								
FRAME	215TCZ	HZ	60	PH	1				
SER.F.	1.15	CODE	G	DES	L	CLASS	F		
NEMA-NOM-EFF	83	PF	86						
RATING	40C AMB-CONT								
CC				USABLE AT 208V	48				
DE	6309	ODE	6206						
ENCL	OPEN	SN							

Parts List		
Part Number	Description	Quantity
SA030735	SA 37E284X47	1.000 EA
RA026774	RA 37E284X47	1.000 EA
37CB3004	37 CB CASTING W/1.09 LEAD HOLE @ 6:00	1.000 EA
51XW2520A12	.25-20 X .75, TAPTITE II, HEX WSHR SLTD	2.000 EA
11XW1032G06	10-32 X .38, TAPTITE II, HEX WSHR SLTD U	1.000 EA
37EP3200A31	FR ENDPLATE, 37L&M, OPEN, MACH, W/GREASE	1.000 EA
HW4500A01	1641B(ALEMITE)400 UNIV, GREASE FITT	1.000 EA
HW4500A17	317400 ALEMITE GREASE RELIEF	1.000 EA
HA1104A01	RODENT SCREEN 37 FRAME 206 BRG FRONT END	1.000 EA
51XW1032A06	10-32 X .38, TAPTITE II, HEX WSHR SLTD S	4.000 EA
HW1000A10	#10 FLAT WASHER (SAE)	4.000 EA
SP1008A01	BAFFLE, MODEL 36 & 37	1.000 EA
13XT0832A07	8-32X7/16 TYP 23 PAN HD SLT DX	2.000 EA
10XN2520A12	O1/4-20X 3/4 HEX HEAD CAP	2.000 EA
HW5100A06	W2420-025 WVY WSHR (WB)	1.000 EA
37EP3401A06	PUEP OPEN 309 BRG W/BAFF, SLINGER, SCREE	1.000 EA
HW4500A01	1641B(ALEMITE)400 UNIV, GREASE FITT	1.000 EA
HW4500A17	317400 ALEMITE GREASE RELIEF	1.000 EA
37AD2000A02	BAFFLE PLATE, STAMPED PLATED	1.000 EA
60XW0632A06	6-32 X 3/8 TORX HEAD SCREW TAPTITE II	4.000 EA
HA1222	RODENT SCREEN - 37 C-FACE MOTORS	4.000 EA
51XW1032A06	10-32 X .38, TAPTITE II, HEX WSHR SLTD S	4.000 EA
HW1025A10	#10 BALANCE WASHER (SPL)	4.000 EA
10XN2520A36	1/4-20X 2 1/4 HEX HD X	4.000 EA

Parts List (continued)		
Part Number	Description	Quantity
HW1001A25	LOCKWASHER 1/4, ZINC PLT .493 OD, .255 I	4.000 EA
XY3118A12	5/16-18 HEX NUT DIRECTIONAL SERRATION	4.000 EA
37CB4516	LIPPED LID FOR 37 FRAME NEC KOBX	1.000 EA
51XW0832A07	8-32 X .44, TAPTITE II, HEX WSHR SLTD SE	4.000 EA
HA2009A02	SLINGER MODEL 37 PUMP MOTORS-2.75 DIA. A	1.000 EA
80XN1032A06	10-32 X 3/8 SET SC HEX SOCK	1.000 EA
85XU0407S04	4X1/4 U DRIVE PIN STAINLESS	2.000 EA
MJ1000A75	GREASE, POLYREX EM EXXON	0.050 LB
MG1000G27	PAINT- S9282E CHARCOAL GREY	0.028 GA
37CB5007A01	CAPACITOR BOX KIT, 37CB3802, 3 EC1216C0	1.000 EA
SP5061A13	MODEL 37 TYPE L STAT SWITCH LEAD ASSEMBL	1.000 EA
HA3104A17	5/16-18X13.250 T-BLT/OHIO	4.000 EA
LB1119	WARNING LABEL	1.000 EA
LB1125C01	STD (STOCK) CARTON LABEL BALDOR WITH FLA	1.000 EA
LC0017	CONN LABEL-1 PHASE-SINGLE VOLT-REV ROTNO	1.000 EA
NP1256L	ALUM UL CSA CC	1.000 EA
G0PA1000	PACKAGING GROUP	1.000 EA
PK3085	STYROFOAM SHAFT SUPPORT ZELLERBACH	1.000 EA

**Performance Data at 230V, 60Hz, 10.0HP (Typical performance - Not guaranteed values)**

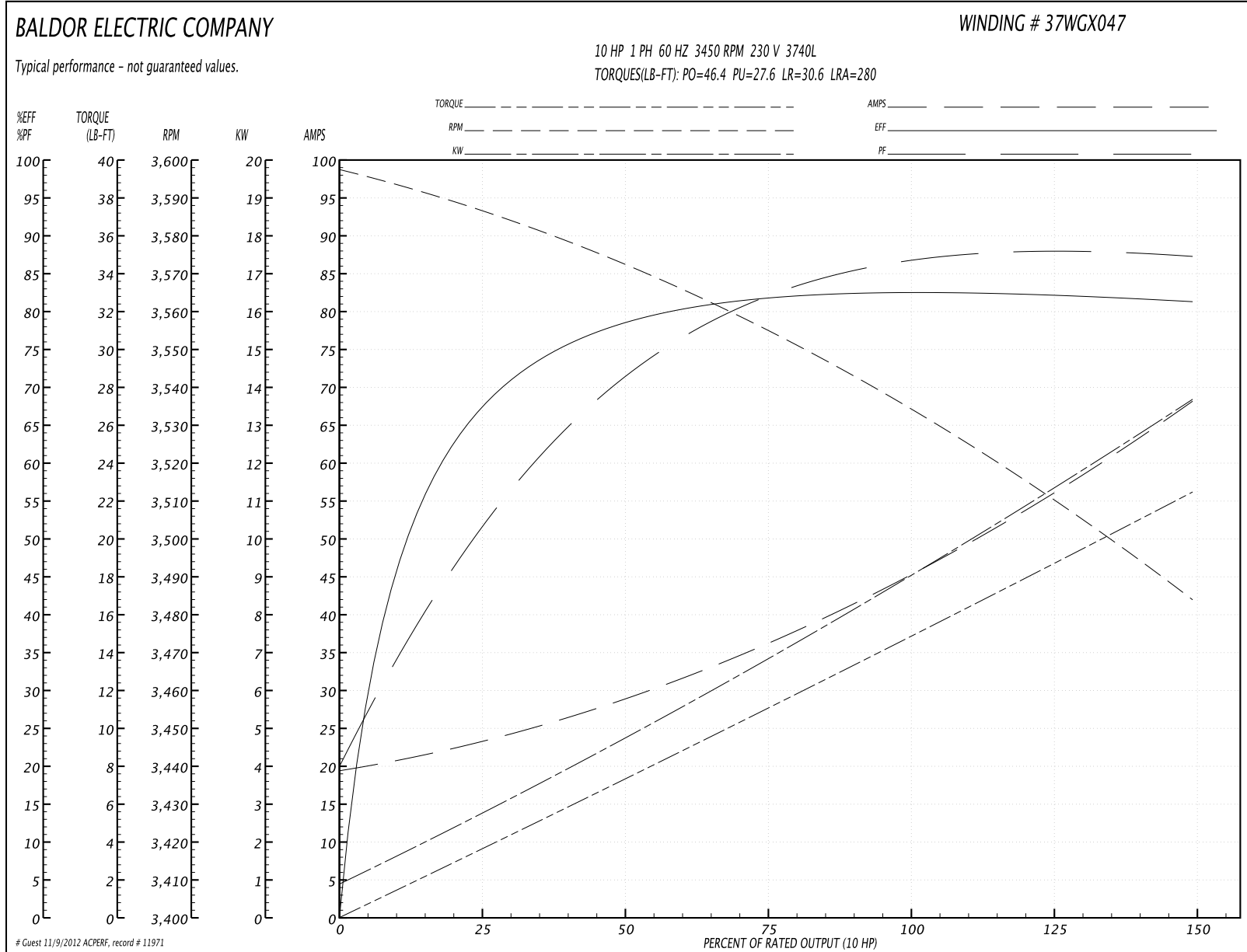
**General Characteristics**

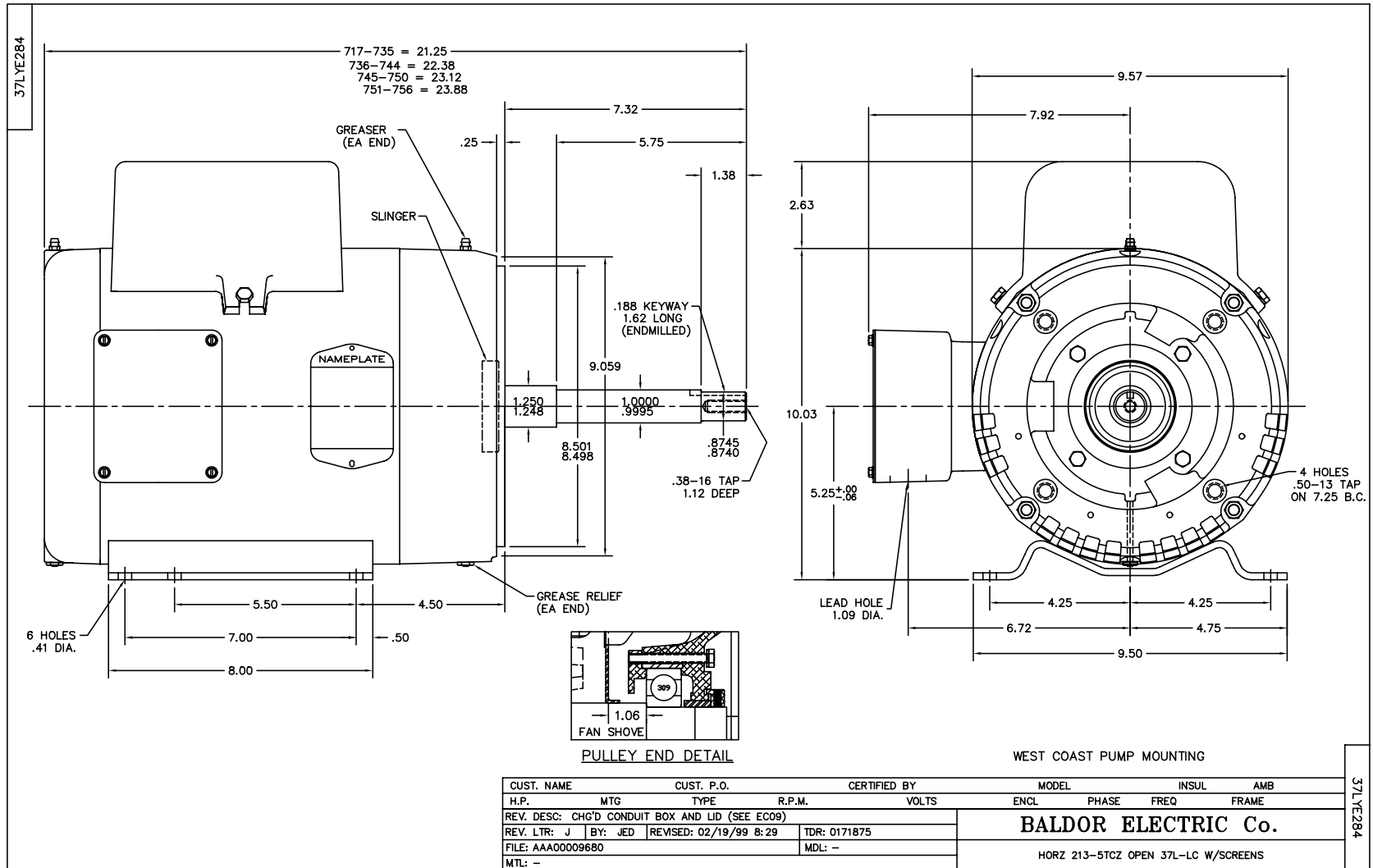
<b>Full Load Torque:</b>	15.0 LB-FT	<b>Start Configuration:</b>	DOL
<b>No-Load Current:</b>	19.3 Amps	<b>Break-Down Torque:</b>	46.4 LB-FT
<b>Line-line Res. @ 25°C.:</b>	0.163 Ohms A Ph / 0.728 Ohms B Ph	<b>Pull-Up Torque:</b>	27.6 LB-FT
<b>Temp. Rise @ Rated Load:</b>	100 C	<b>Locked-Rotor Torque:</b>	30.6 LB-FT
<b>Temp. Rise @ S.F. Load:</b>	115 C	<b>Starting Current:</b>	280.0 Amps

**Load Characteristics**

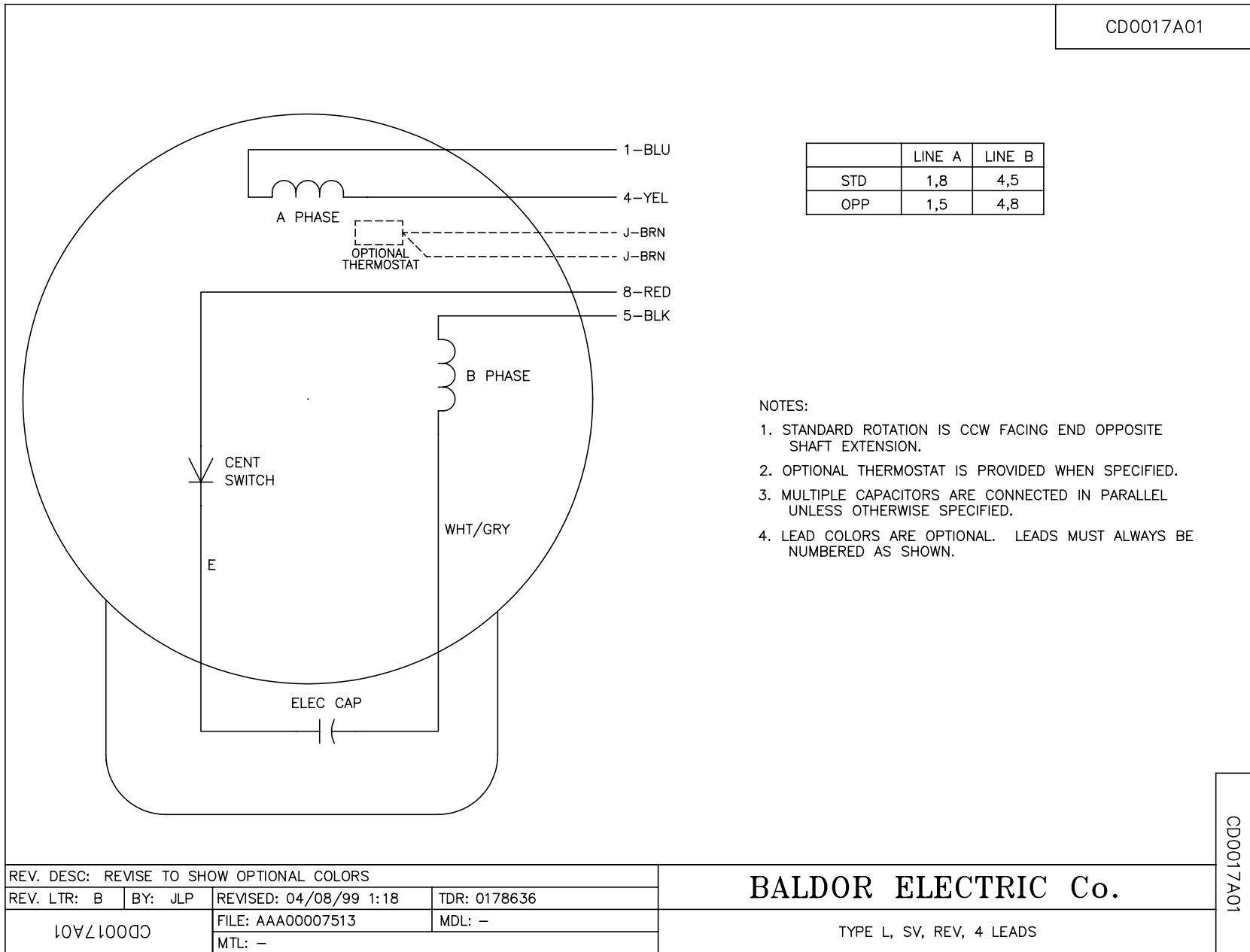
% of Rated Load	25	50	75	100	125	150	S.F.
<b>Power Factor:</b>	56.0	72.0	82.0	86.0	88.0	87.0	87.0
<b>Efficiency:</b>	63.0	79.3	81.1	83.7	82.8	80.7	83.2
<b>Speed:</b>	3587.0	3570.0	3552.0	3536.0	3512.0	3482.0	3522.0
<b>Line Amperes:</b>	23.5	29.0	37.2	45.5	55.6	68.6	51.6

Performance Graph at 230V, 60Hz, 10.0HP Typical performance - Not guaranteed values





CD0017A01



REV. DESC: REVISE TO SHOW OPTIONAL COLORS			
REV. LTR: B	BY: JLP	REVISED: 04/08/99 1:18	TDR: 0178636
10VZ10000		FILE: AAA00007513	MDL: -
CD0017A01		MTL: -	

**BALDOR ELECTRIC Co.**

TYPE L, SV, REV, 4 LEADS

CD0017A01