

BALDOR® • RELIANCE

Product Information Packet

ELECTRIC MOTOR WHOLESAL.COM

ZDM3764T

3HP,1165RPM,3PH,60HZ,215TC,0737M,TEBC,F1

Part Detail							
Revision:	-	Status:	PRD/A	Change #:		Proprietary:	No
Type:	AC	Prod. Type:	0737M	Elec. Spec:	07WGX822	CD Diagram:	
Enclosure:	TEBC	Mfg Plant:		Mech. Spec:	07J137	Layout:	
Frame:	215TC	Mounting:	F1	Poles:	06	Created Date:	12-09-2010
Base:	RG	Rotation:	RS	Insulation:	H	Eff. Date:	12-14-2010
Leads:	9#14	Literature:		Elec. Diagram:		Replaced By:	
Nameplate NP1167L							
CAT NO	ZDM3764T						
SPEC.	07J137X822Z1						
FRAME	215TC	HP	3 TE				
VOLTS	230/460						
MAG CUR	4.6/2.3	FLA	9/4.5				
RPM	1165	RPM MAX	2300				
HZ	60	PH	3	CLASS	H		
SER.F.	1.00	DES	B	SL HZ	1.7		
NEMA-NOM-EFF	90.2	WK2	0.92				
BLWR V	460	PH	3	HZ	60	A	.25
RATING	40C AMB-CONT						
DE BRG	6307	ODE BRG	6206				
CC		SN					

Parts List		
Part Number	Description	Quantity
SA213126	SA 07J137X822Z1	1.000 EA
RA200352	RA 07J137X822Z1	1.000 EA
HW3201A05	3/8-16 EYEBOLT	1.000 EA
09CB3002SP	CB W/1.38 LEAD HOLE FOR 37, 39, 307 & 30	1.000 EA
09GS1000SP	GASKET-CONDUIT BOX, 1/16 THICK LEXIDE	1.000 EA
51XW2520A12	.25-20 X .75, TAPTITE II, HEX WSHR SLTD	2.000 EA
11XW1032G06	10-32 X .38, TAPTITE II, HEX WSHR SLTD U	1.000 EA
HW3001B01	003SS CUP WASHER, FOR #8 SCREW	1.000 EA
37EP1100B61	FR TEBC 206 BRG W/ GRSR & THRU-SHAFT ENC	1.000 EA
HW4500A01	1641B(ALEMITE)400 UNIV, GREASE FITT	1.000 EA
HW5100A06	W2420-025 WVY WSHR (WB)	1.000 EA
37EP1300A01SP	FACE MT ENDPLATE-ENCL-307 BRG-213TC-215T	1.000 EA
HW4500A01	1641B(ALEMITE)400 UNIV, GREASE FITT	1.000 EA
10XN2520A30	HEX HD CAP SCREW-STD THD-.25 X 20 THD PE	4.000 EA
HW1001A25	LOCKWASHER 1/4, ZINC PLT .493 OD, .255 I	4.000 EA
XY3118A12	5/16-18 HEX NUT DIRECTIONAL SERRATION	4.000 EA
10XN2520A08	1/4-20X1/2 HEX HEAD CAP	2.000 EA
HA3218A06	MALE-FEMALE STANDOFF .25-20 .38 HEX X .5	3.000 EA
10XN2520A06	1/4 20X3/8 HX HD CAP	3.000 EA
HW1001A25	LOCKWASHER 1/4, ZINC PLT .493 OD, .255 I	3.000 EA
09CB3501SP	CONDUIT BOX LID FOR 09CB3001 & 09CB3002	1.000 EA
09GS1013SP	09 GS FOR 09CB3501 LID - LEXIDE	1.000 EA
51XW2520A12	.25-20 X .75, TAPTITE II, HEX WSHR SLTD	2.000 EA
HA1005A22	SLINGER, OD 2.00, ID 1.14, 206 BRG, GM	1.000 EA

Parts List (continued)		
Part Number	Description	Quantity
HW2501F21	KEY, 5/16 SQ X 2.375	1.000 EA
HA7000A02	KEY RETAINER RING, 1 1/8 DIA, 1 3/8 DIA	1.000 EA
MJ5004A05	#242-21 LOCTITE GENERAL PURPOSE MED. STR	0.005 EA
85XU0407S04	4X1/4 U DRIVE PIN STAINLESS	2.000 EA
LB1115	LABEL,LIFTING DEVICE	1.000 EA
LB1009	LABEL,ROTATION DIRECTION (ON ROLLS)	1.000 EA
MJ1000A75	GREASE, POLYREX EM EXXON	0.050 LB
HA3104A32	THRUBOLT- 5/16-18 X12.750	4.000 EA
07FH5002A08	BLOWER ASSY. ,07FH4001, EF5000	1.000 EA
MG1000G27	PAINT- S9282E CHARCOAL GREY	0.036 GA
LC0034	CONNECTION LABEL	1.000 EA
OE5011A04	HS25 ENCODER ASSY - TEBC	1.000 EA
LB1119	WARNING LABEL	1.000 EA
LB1172A01	CUSTOM MTR CARTON LABEL LASER PRINTER	1.000 EA
LC0145B01	CONNECTION LABEL	1.000 EA
NP1167L	VEC, SS, UL CSA, W/O THERMAL, LASER	1.000 EA
37PA1039	PACKAGING GROUP	1.000 EA

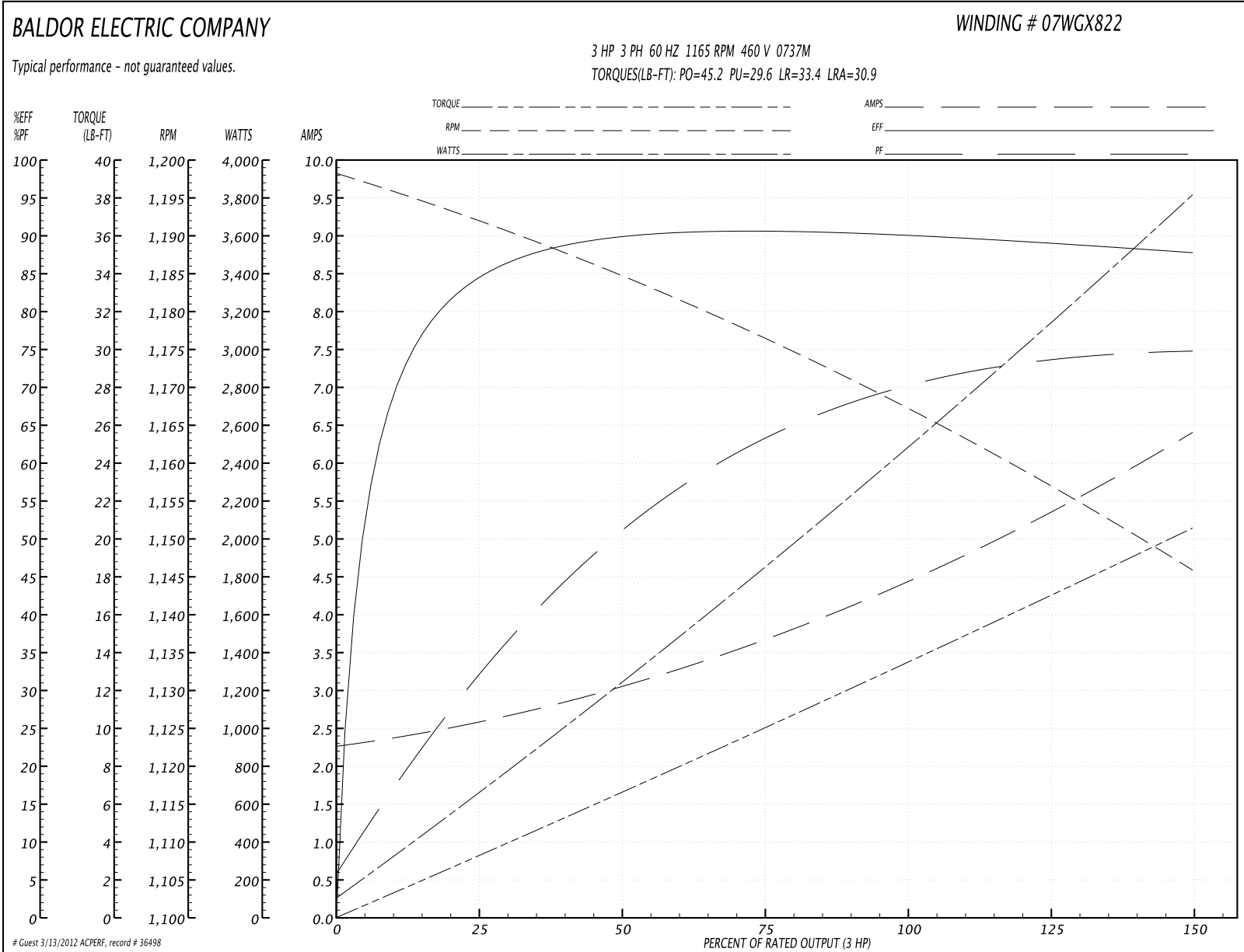
Performance Data at 460V, 60Hz, 3.0HP (Typical performance - Not guaranteed values)
General Characteristics

Full Load Torque:	13.5 LB-FT	Start Configuration:	DOL
No-Load Current:	2.29 Amps	Break-Down Torque:	45.2 LB-FT
Line-line Res. @ 25°C.:	2.65 Ohms A Ph / 0.0 Ohms B Ph	Pull-Up Torque:	29.6 LB-FT
Temp. Rise @ Rated Load:	31 C	Locked-Rotor Torque:	33.4 LB-FT
Temp. Rise @ S.F. Load:	37 C	Starting Current:	30.9 Amps

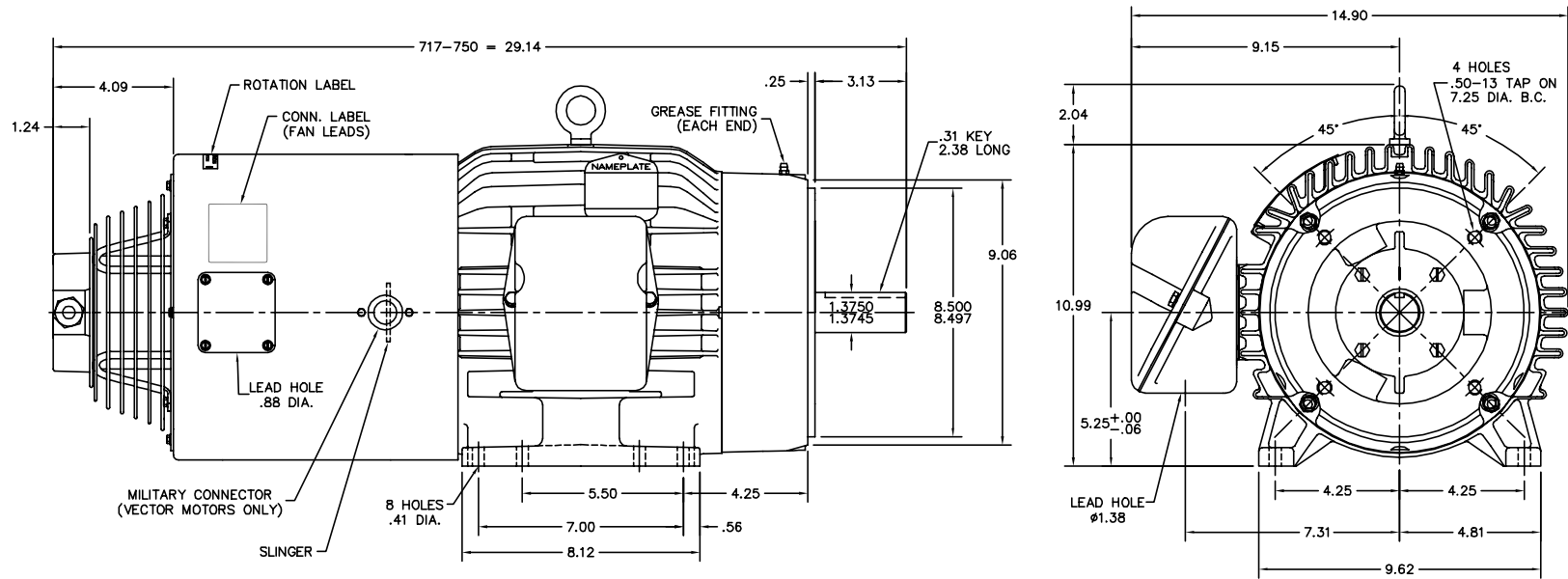
Load Characteristics

% of Rated Load	25	50	75	100	125	150	S.F.
Power Factor:	34.0	52.0	63.0	70.0	73.0	75.0	0.0
Efficiency:	83.6	89.0	90.9	90.3	89.4	87.6	0.0
Speed:	1191.0	1184.0	1176.0	1168.0	1158.0	1145.0	0.0
Line Amperes:	2.56	3.05	3.69	4.47	5.36	6.39	0.0

Performance Graph at 460V, 60Hz, 3.0HP Typical performance - Not guaranteed values



07LYJ137



CUSTOMER IS RESPONSIBLE FOR DETERMINING THAT MOTOR PERFORMANCE IS SUITABLE IN THE APPLICATION.

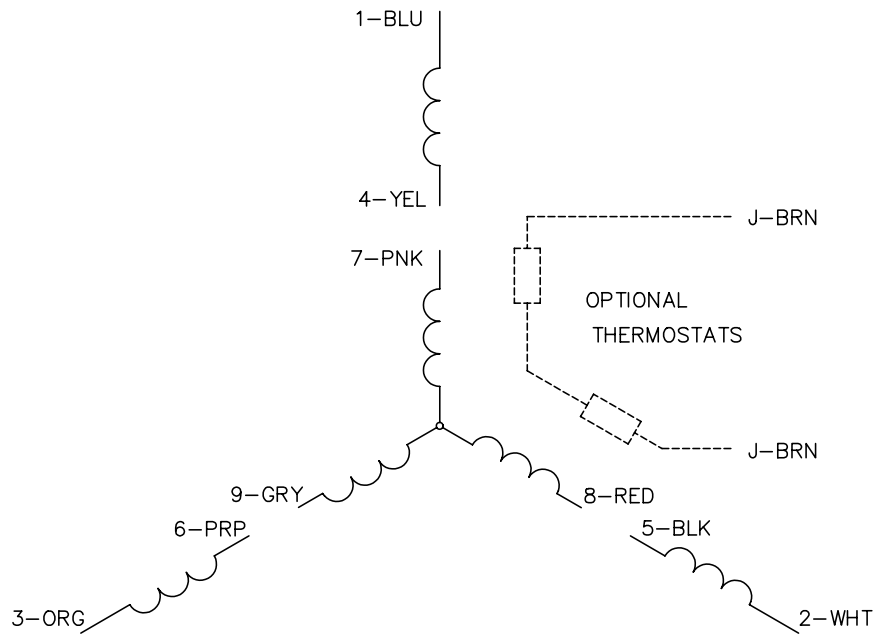
REV. DESC: CORRECT ROTATION LABEL GRAPHICS & LEADER			
REV. LTR: B	BY: DLS	REVISED: 15:21:11 01/09/2002	TDR: 251223
FILE: AAA00071017		REF: 07LYJ137	
MTL: -			

BALDOR ELECTRIC Co.

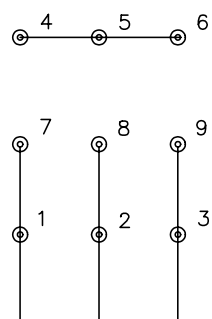
STD HORZ 213-5TC TEBC 307M INVERTER/VECTOR (THRU-SHAFT ENC)

07LYJ137

CD0005

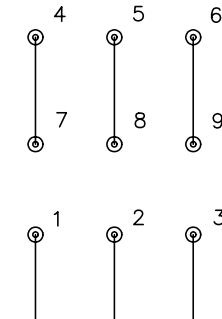


LOW VOLTAGE (2Y)



LINE

HIGH VOLTAGE (1Y)



LINE

NOTES:

1. INTERCHANGE ANY TWO LINE LEADS TO REVERSE ROTATION.
2. OPTIONAL THERMOSTATS ARE PROVIDED WHEN SPECIFIED.
3. ACTUAL NUMBER OF INTERNAL PARALLEL CIRCUITS MAY BE A MULTIPLE OF THOSE SHOWN ABOVE.
4. LEAD COLORS ARE OPTIONAL. LEADS MUST ALWAYS BE NUMBERED AS SHOWN.

REV. DESC: REVISE TO SHOW OPTIONAL COLORS			
REV. LTR: E	BY: JLP	REVISED: 01/19/99 10:15	TDR: 0171435
90000		FILE: AAA00005140	MDL: -
		MTL: -	

BALDOR ELECTRIC Co.

3PH, DV, 9 LEADS

CD0005