

# **BALDOR**® • *RELIANCE*

## **Product Information Packet**

# **ZDWNM3611T**

**3HP, 1760RPM, 3PH, 60HZ, 184TC, 3640M, TENV, F1**

Part Detail							
Revision:	A	Status:	PRD/A	Change #:		Proprietary:	No
Type:	AC	Prod. Type:	3640M	Elec. Spec:	36WGS952	CD Diagram:	
Enclosure:	TENV	Mfg Plant:		Mech. Spec:	36J562	Layout:	
Frame:	184TC	Mounting:	F1	Poles:	04	Created Date:	07-03-2012
Base:	RG	Rotation:	R	Insulation:	H	Eff. Date:	09-21-2012
Leads:	9#16	Literature:		Elec. Diagram:		Replaced By:	

Nameplate NP1609L							
CAT NO	ZDWNM3611T						
SPEC.	36J562S952Z1						
FRAME	184TC	HP	3	TE			
VOLTS	230/460						
MAG CUR	4.2/2.1	FLA	8.2/4.1				
RPM	1760	RPM MAX	6000				
HZ	60	PH	3	CLASS	H		
SER.F.	1.00	DES	B	SL HZ	1.4		
NEMA-NOM-EFF	89.5	WK2	0.372				
BLWR V		PH		HZ		A	
RATING	40C AMB-CONT						
DE BRG	6206	ODE BRG	6205				
CC		SER.NO					

Parts List		
Part Number	Description	Quantity
SA247261	SA 36J562S952Z1	1.000 EA
RA234138	RA 36J562S952Z1	1.000 EA
36CB3005A03W	36 CB .75 NPT @ 6 W/WHITE EPOXY	1.000 EA
35GS1022A03SP	GASKET BOX .125 THK WHITE NEOPRENE	1.000 EA
51XB1016A08	10-16X 1/2HXWSSLD SERTYB	2.000 EA
11XW1032G06	10-32 X .38, TAPTITE II, HEX WSHR SLTD U	1.000 EA
36EP3101B26MW	FR TENV 205 BRG WD FOR THRU-SH ENC COVER	1.000 EA
HW4032A01	BLACK DRAIN PLUG FOR WASH DOWN MOTORS	3.000 EA
HW4600B49SP	SEAL 0.938 X 1.624 X 0.250 SINGLE LIP DB	1.000 EA
HW5100A05	WVY WSHR F/205 & 304 BRGS	1.000 EA
36EP3301A27MW	PU ENDPLATE, MACH W/WHITE EPOXY	1.000 EA
HW4032A01	BLACK DRAIN PLUG FOR WASH DOWN MOTORS	3.000 EA
HW4600B50SP	SEAL 1.156 X 1.874 X 0.250 SINGLE LIP DB	1.000 EA
10XN2520S26	1/4-20X 1 5/8 HEX HD SS	4.000 EA
10XN2520S08	SCREW, 1/4-20 X 1/2 HHCS SS	1.000 EA
35FH4801W	THRU-SHAFT ENCODER COVER INV/VEC F1 & F2	1.000 EA
10XN2520S08	SCREW, 1/4-20 X 1/2 HHCS SS	4.000 EA
36CB4518	36 LIPPED CB LID AUTOPHORETIC	1.000 EA
37GS3010SP	1/16"WHITE LID GASKET	1.000 EA
59XW0832S07	TAPTITE II,HEX WSHR UNSLTD SER,410 S.S.,	4.000 EA
HW1003S08	WASHER, #8 EX TH LK, SS	4.000 EA
HW4600B36SP	V-RING SLINGER 1.188 X 1.690 X 0.240	1.000 EA
HW2502E16	#303 SS,SQ KEY 1/4 X 1.750	1.000 EA
HA7000A02	KEY RETAINER RING, 1 1/8 DIA, 1 3/8 DIA	1.000 EA

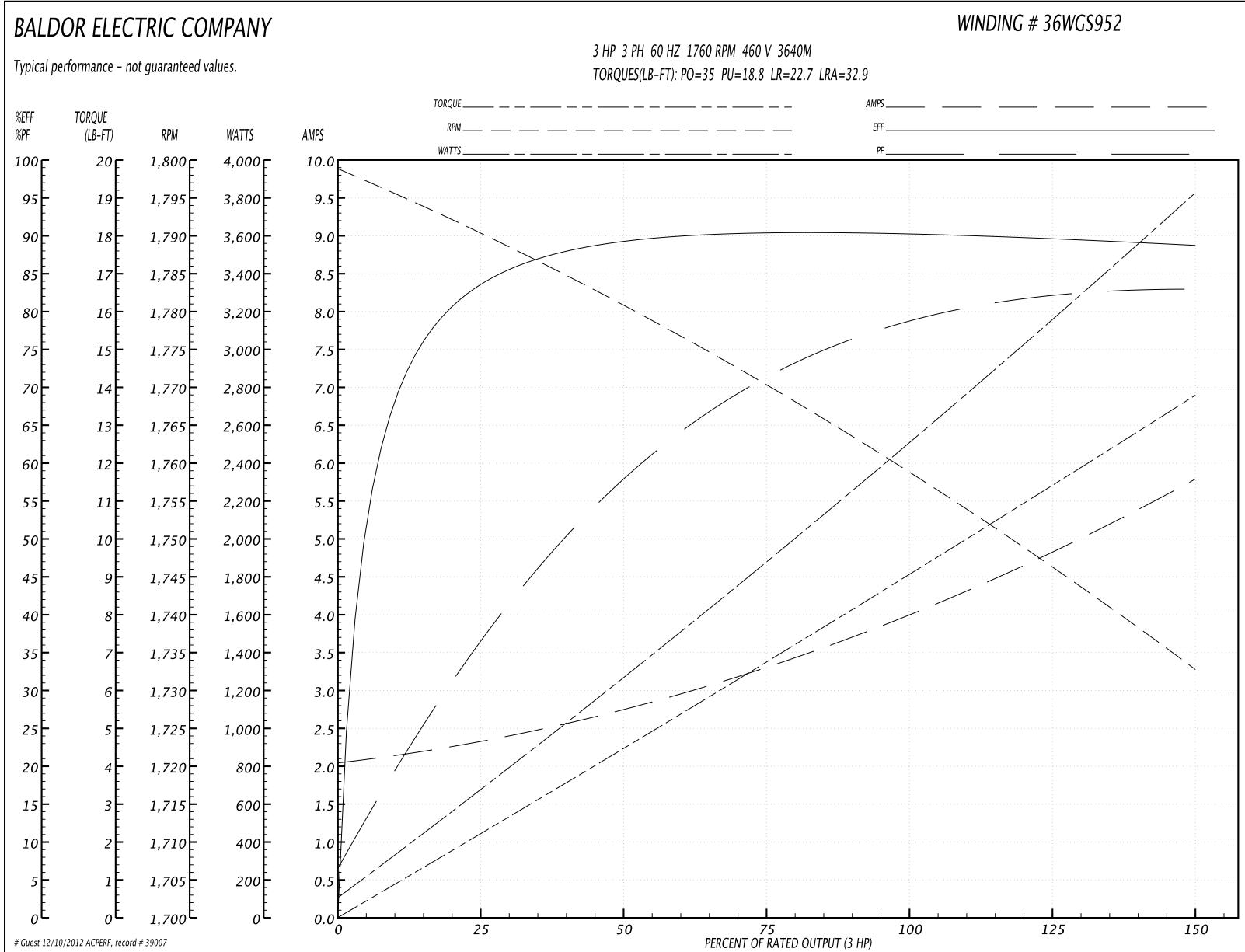
Parts List (continued)		
Part Number	Description	Quantity
MJ5004A05	#242-21 LOCTITE GENERAL PURPOSE MED. STR	0.005 EA
MJ5001A01	46-665 RED SEALER	0.001 QT
85XU0407S04	4X1/4 U DRIVE PIN STAINLESS	2.000 EA
LB1164	LABEL,WARNING AND DRAIN	1.000 EA
HW3200A01	3/8-16X3/4 I-BLT WELDED F/S	1.000 EA
MJ1000A75	GREASE, POLYREX EM EXXON	0.050 LB
OE5011A05SP	HS25 ENCODER ASSY - TENV	1.000 EA
MG1025Z20	ACTIVATOR WILKOFAS 060.32	0.010 GA
MG1025W11	PAINT- 781-101 WILKOFAS WHITE EPOXY	0.022 GA
HA3101S28	THRUBOLT- 1/4-20 X 12.50 SS	4.000 EA
LB1115	LABEL,LIFTING DEVICE	1.000 EA
LB1125C01	STD (STOCK) CARTON LABEL BALDOR WITH FLA	1.000 EA
LC0145B01	CONNECTION LABEL	1.000 EA
NP1609L	SS WD VEC UL CSA CC REV MTG	1.000 EA
36PA1001	PACKAGING GROUP	1.000 EA

**Performance Data at 460V, 60Hz, 3.0HP (Typical performance - Not guaranteed values)**

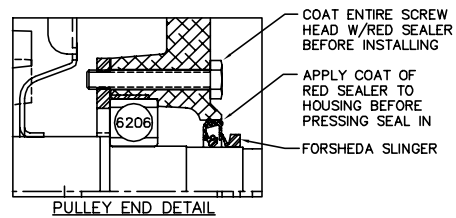
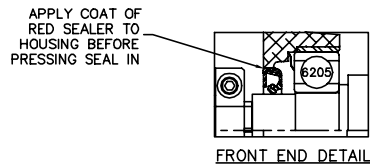
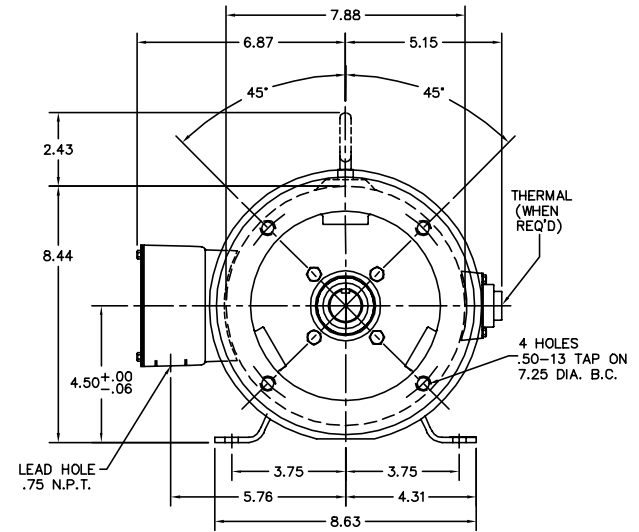
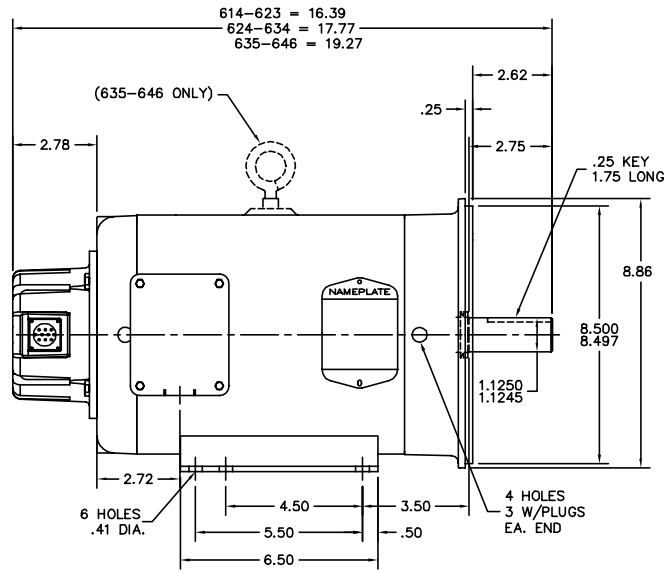
General Characteristics			
Full Load Torque:	9.1 LB-FT	Start Configuration:	DOL
No-Load Current:	2.09 Amps	Break-Down Torque:	35.0 LB-FT
Line-line Res. @ 25°C.:	3.3157 Ohms A Ph / 0.0 Ohms B Ph	Pull-Up Torque:	18.8 LB-FT
Temp. Rise @ Rated Load:	74 C	Locked-Rotor Torque:	22.7 LB-FT
Temp. Rise @ S.F. Load:		Starting Current:	32.9 Amps

Load Characteristics							
% of Rated Load	25	50	75	100	125	150	S.F.
Power Factor:	38.0	60.0	71.0	78.0	82.0	84.0	0.0
Efficiency:	83.8	89.3	90.4	90.3	89.6	88.5	0.0
Speed:	1790.1	1780.3	1769.9	1758.7	1746.6	1732.6	0.0
Line Amperes:	2.29	2.72	3.34	4.05	4.86	5.75	0.0

Performance Graph at 460V, 60Hz, 3.0HP Typical performance - Not guaranteed values



36LYJ562



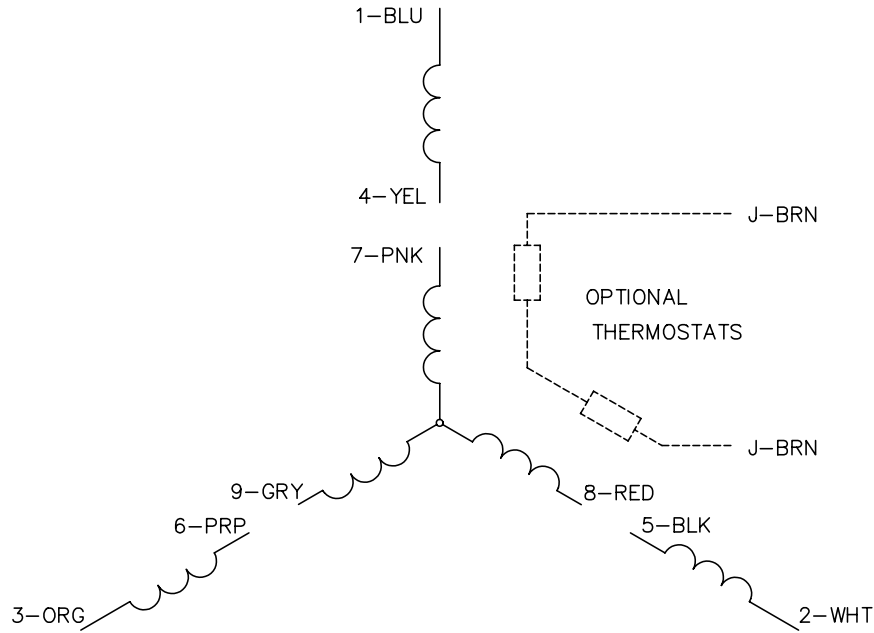
CUSTOMER IS RESPONSIBLE FOR DETERMINING THAT MOTOR PERFORMANCE IS SUITABLE IN THE APPLICATION.

REV. DESC: ADDED DRAIN PLUGS		
REV. LTR: C	VERSION: 01	TDR: 000000374457
FILE: \AAA\00070\975	REVISED: 06:45:49 08/26/2005	BY: ENKENTO
MTL: -		

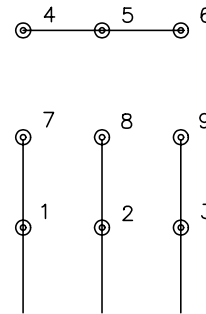
**BALDOR ELECTRIC Co.**  
HORZ 182-4TC TENV 36M WD (S/P #9) VECTOR (THRU-SHAFT ENCODER)

36LYJ562

CD0005

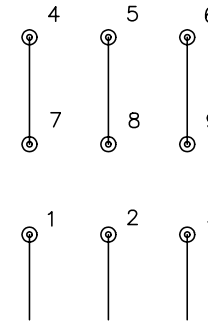


LOW VOLTAGE  
(2Y)



LINE

HIGH VOLTAGE  
(1Y)



LINE

NOTES:

1. INTERCHANGE ANY TWO LINE LEADS TO REVERSE ROTATION.
2. OPTIONAL THERMOSTATS ARE PROVIDED WHEN SPECIFIED.
3. ACTUAL NUMBER OF INTERNAL PARALLEL CIRCUITS MAY BE A MULTIPLE OF THOSE SHOWN ABOVE.
4. LEAD COLORS ARE OPTIONAL. LEADS MUST ALWAYS BE NUMBERED AS SHOWN.

REV. DESC: REVISE TO SHOW OPTIONAL COLORS			
REV. LTR: E	BY: JLP	REVISED: 01/19/99 10:15	TDR: 0171435
90000		FILE: AAA00005140	MDL: -
		MTL: -	

**BALDOR ELECTRIC Co.**

3PH, DV, 9 LEADS

CD0005